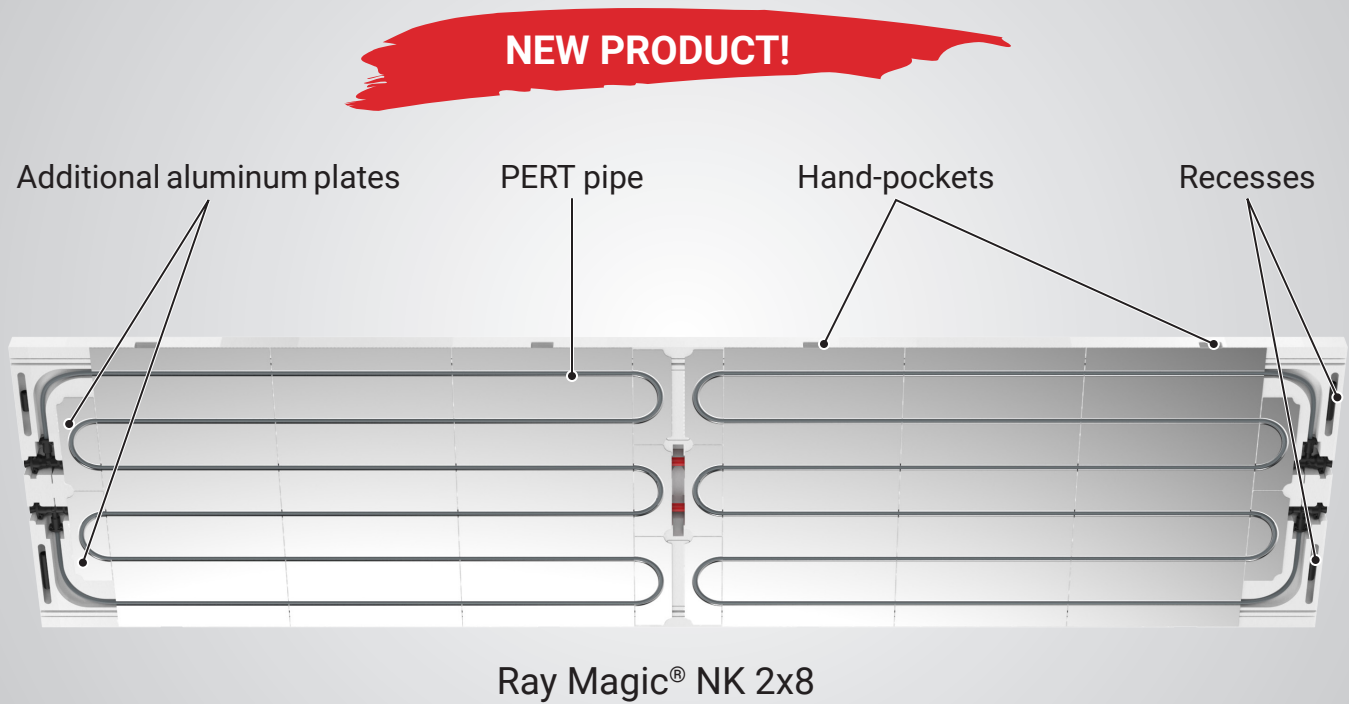


The next generation of radiant ceiling panels

Ray Magic® NK radiant ceiling panels,
the most efficient radiant cooling and heating delivery system.

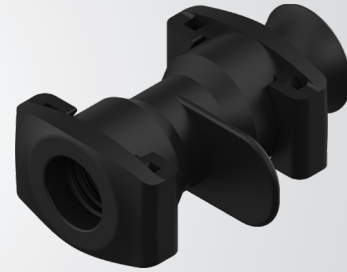
In order to further improve the most popular radiant ceiling panel in the world, we have revisited and redesigned several aspects of the 2x8 Ray Magic® NK panel and have introduced a new 2x4 size to the NK line.

Firstly, the NK panels' internal fittings now feature a **new EDPM triple O-ring** optimized for use with 1/2" PEX. We also completely redesigned the EPS injection mold to accommodate two **additional aluminum plates** (curves) and improve the panel in many aspects. The increase in the heat-transfer surface area has increased the cooling/heating capacity. Furthermore, the new NK panel now has **hand-pockets** that allow for the easy removal of the pre-cut EPS edges used to protect the aluminum transfer plates during transportation. In the new EPS mold, the **recesses** used to store the supplied RM couplings and RM caps were repositioned on the top side and shaped to hold the pieces in place.



The new NK panels will now be manufactured using a more-flexible **8mm PERT piping** with a low-friction outer layer and an interior oxygen barrier which both help to reduce expansion noise.

To be able to add a new 2x4 size to the NK panel line, we developed a new 2-way fitting based on the same patented technology of the 3-way. The new 2-way fitting features the improved EDPM triple O-ring and the funnel-shaped collar to facilitate the joining with other panels and the insertion of 1/2" PEX pipe.



New **installation-ready** 2x4 Ray Magic® NK panel added to the line



Ray Magic® NK 2x4

Although the full-size 2x8 panel can still be cut on the job site into two 2x4 halves, the new installation-ready 2x4 Ray Magic® NK panel comes with the 2-way fittings pre-installed and pre-tested at the factory. The 2x4 NK panel makes the system design more flexible and reduces the likelihood of installation errors.

