

shading

THE  
outdoor  
ALCHEMIST

Feng Retractable Awning

**Corradi**  
OUTDOOR LIVING SPACE

Time to...

**Enjoy Your  
Outdoors**



- 2. What We Offer You
- 4. Shade Awnings
  - 7. Klip and Klip Pod
  - 13. Svet
  - 21. Shan
  - 23. Feng
  - 27. Frame
  - 35. Defense
- 38. Fabric Collection
- 40. Motorization
- 42. Product Comparison Overview
- 47. Why Corradi



# We offer space for your time.

## Time for you

Time. Time to do things or to do nothing. Time to think. Time to free your mind. Time to live, alone or with others. Like an alchemist, Corradi draws out the inherent energy from every outdoor area, transforming it into a living space custom made for you.

**We give space to your time to give you space for your life.**

## Time for your business

The outdoor spaces of restaurants, hotels, resorts and mixed-use developments all have great potential. With Corradi's outdoor solutions they can be used throughout the year. Since 1978 Corradi has offered the commercial market customized solutions that have transformed outdoor spaces worldwide. Take advantage of your outdoor space to increase your business and enjoy year-round.

**Our experience guarantees your success.**

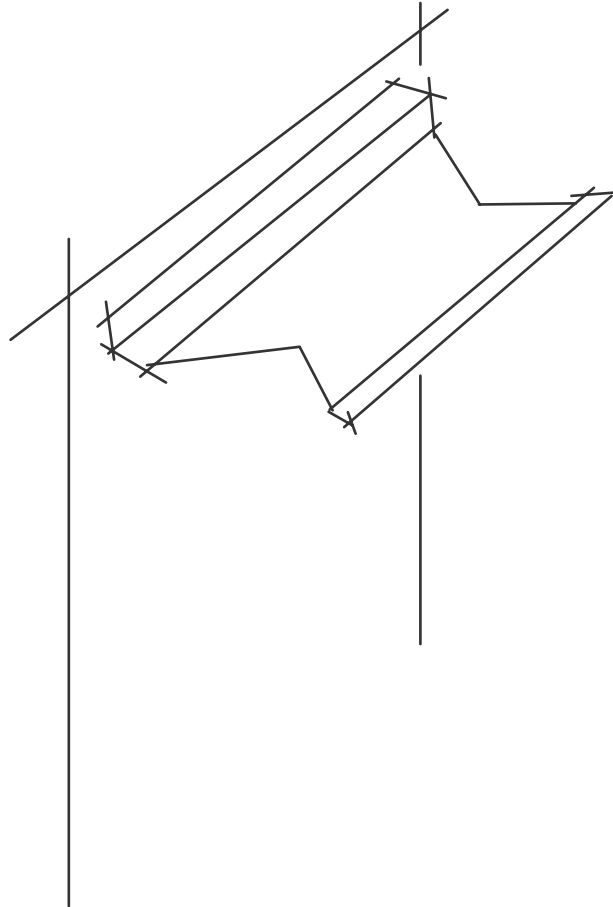
## Time for your design

Find your outdoor muse. Every project begins with inspiration, bringing ideas to life in concepts and themes. Alchemy starts when the style you envision starts taking shape in technical drawings and certified engineering. Corradi USA offers unequivocal excellence in unique solutions for your outdoor space design. Your ideas become the essence of conversations and collaborations to create an ideal outdoor space designed by our alchemists to bring your vision to reality.

**Our ingenuity fuels your creativity.**



# Shading Systems



Shade and the art of  
optimizing it.

Sculpt the light and shadow of your outdoor space with Corradi USA's premier Shading Line. Our shading line provides a variety of sophisticated retractable shading options that inspire and enhance any outdoor space.





Klip



Svet



Feng



Shan



Frame



Defense



From the sleek casing of the highly sought after Shan Awning to the nautical elegance of the Defense Shade Sail, Corradi Shading Systems are an essential part of modern outdoor living and design.







# Klip & Klip Pod

retractable awning  
by ShadeLab



**Klip** is the classic awning, reinvented. It is the square bar awning that balances innovation with tradition. A versatile sunshade combined with a technologically advanced new design that provides superior functionality. This is consistent with our passion to break down design barriers and offer the most innovative retractable awnings.

Time to renew



Create your vision



# KLIP Technical Data



**Klip** is a classic open-roll retractable awning with an advanced design built with a square bar attachment in the back and a round front bar. The components have been refined to create functionality never seen before in a square bar attached awning. An optional protective hood is available, which enables adjustment for any installation environment. Klip belongs to Shadelab's family of square bar attached awnings that have reinvented the category. Previously, they were only functional. Now they are enchanting architectural features. The simplicity and flexibility of ShadeLab's avant-garde concepts enables the creation of shading solutions that Corradi USA offers to reflect your personal style and desired comfort.

## Features

- » OPEN ROLL AWNING
- » MOTORIZED, AND MANUAL AVAILABLE
- » CONTINUOUS MICROMETRIC PITCH REGULATION
- » AVAILABLE WITH PROTECTIVE HOOD
- » CERTIFIED ITALIAN STAINLESS STEEL SCREWS AND PINS
- » WALL, CEILING, OR ROOF INSTALLATION
- » PATENTED DESIGN

## ARM SIZE & WIDTH RANGE

Projection*	Max. width	Style
6'6" (78")	360" / 30'	Urban
8'4" (100")	360" / 30'	Urban
10' (120")	360" / 30'	Urban
11'6" (138")	360" / 30'	Katana

\*Maximum projection indicated is calculated with arms at 0° pitch, perpendicular to the mounted wall. Increasing the pitch will decrease the projection when measured in a straight/perpendicular line from the mounted wall.

## MINIMUM WIDTH PER ARM COUNT

Projection*	2 Arms	3 Arms	4 Arms
6'6" (78")	102"	149"	195"
8'4" (100")	122"	178"	241"
10' (120")	148"	214"	280"
11'6" (138")	167"	243"	319"

## MOTORIZATION

SOMFY® 500 SERIES, RTS OR STANDARD.

## MANUAL

Gear & Crank option available



## FRAME COLORS

### POWDER COATING\* \*\*

Aluminum extrusions are painted with certified Qualicoat cycle epoxy powders.



WHITE QUARTZ



CARBON



GRANITE

\*RAL custom color powder coating is also available.

\*\*Plastic parts are only available in the standard colors.

Differences in color tones may occur in this brochure due to reproduction technique, therefore these finish images should not be used for final production specifications.

## FABRICS

**Corradi USA offers the highest quality acrylic fabrics for retractable awnings. Listed below are recommended standard and optional fabrics.**

### PARA TEMPOTEST USA

Vibrant and durable injection dyed acrylic and solar protection fabrics.

- SOLID ACRYLICS
- SOLID ACRYLICS FR
- STRIPED ACRYLICS

### OPTIONAL FABRICS\*

\*These are fabric brands that may be used but are not standard:

Sunbrella Acrylics

**URBAN ARM:** An unprecedented retractable arm design made from the highest quality raw materials and the advanced technology of the **DAT SYSTEM** (Dynamic Arm Torsion System) come together to make the Urban arm a masterpiece.

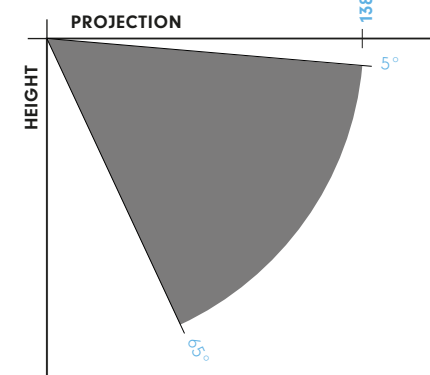
**KATANA ARM:** Specifically designed for larger projections (11'6" and 13'6"). All of Katana's differences are internal as the exterior look and smooth function of the Katana arm is identical to Urban.



The distance between fabric and arm increases when deployed to protect the fabric.



## PITCH







Amplify your freedom



# KLIP POD Technical Data



**Klip Pod** is a Shadelab semi cassette awning developed from the existing Klip. Its unique round protective case is designed to protect the awning fabric when it's retracted from rain and other contaminants. It eliminates the need for a protective hood. The rounded terminal profile of Klip Pod completes the sleekness of its design.

## Features

- » SEMI-CASSETTE PROTECTED AWNING
- » MOTORIZED ONLY
- » CONTINUOUS MICROMETRIC PITCH REGULATION
- » CERTIFIED ITALIAN STAINLESS STEEL SCREWS AND PINS
- » WALL, CEILING, OR ROOF INSTALLATION
- » PATENTED DESIGN

## ARM SIZE & WIDTH RANGE

Projection*	Max. width	Style
6'6" (78")	212" / 17'8"	Urban
8'4" (100")	212" / 17'8"	Urban
10' (120")	212" / 17'8"	Urban
11'6" (138")	212" / 17'8"	Katana

\*Maximum projection indicated is calculated with arms at 0° pitch, perpendicular to the mounted wall. Increasing the pitch will decrease the projection when measured in a straight/perpendicular line from the mounted wall.

## MINIMUM WIDTH PER ARM COUNT

Projection*	2 Arms
6'6" (78")	102"
8'4" (100")	122"
10' (120")	148"
11'6" (138")	167"

## MOTORIZATION

SOMFY® 500 SERIES, RTS OR STANDARD.



## FRAME COLORS

### POWDER COATING\* \*\*

Aluminum extrusions are painted with certified Qualicoat cycle epoxy powders.



WHITE QUARTZ



CARBON



GRANITE



CORTEN

\*RAL custom color powder coating is also available.

\*\*Plastic parts are only available in the standard colors.

Differences in color tones may occur in this brochure due to reproduction technique, therefore these finish images should not be used for final production specifications.

## FABRICS

**Corradi USA offers the highest quality acrylic fabrics for retractable awnings. Listed below are recommended standard and optional fabrics.**

### PARA TEMPOTEST USA

Vibrant and durable injection dyed acrylic and solar protection fabrics.

SOLID ACRYLICS  
SOLID ACRYLICS FR  
STRIPED ACRYLICS

### OPTIONAL FABRICS\*

\*These are fabric brands that may be used but are not standard: Sunbrella Acrylics

**URBAN ARM:** An unprecedented retractable arm design made from the highest quality raw materials and the advanced technology of the **DAT SYSTEM** (Dynamic Arm Torsion System) come together to make the Urban arm a masterpiece.

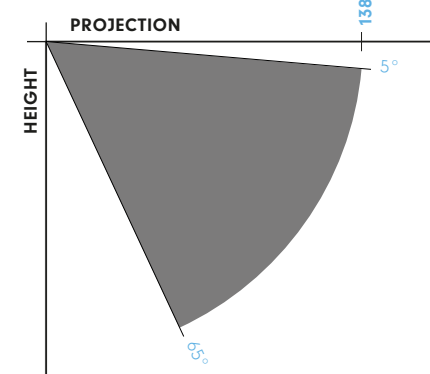
**KATANA ARM:** Specifically designed for larger projections (11'6" and 13'6"). All of Katana's differences are internal as the exterior look and smooth function of the Katana arm is identical to Urban.



The distance between fabric and arm increases when deployed to protect the fabric.



## PITCH









# Svet

Retractable Awning  
by ShadeLab



Inspired design, cutting edge performance and its distinct aluminum profile perfectly synchronizes the Svet with contemporary urban architecture.

Time to influence



Expertise in ambiance



# SVET Technical Data



**Svet** is an original work of art. Cutting-edge design and performance make it blend perfectly with contemporary urban architecture. It is particularly well suited to shade the large areas of bars, restaurants and resorts. All of Svet's hardware is stainless steel and the roller tube bracket seamlessly integrates with the square bar. This eliminates the need for external bolted-on brackets, which enhances its linear simplicity. As always, Svet is a product of Shadelab patented technology and classic designs created by true shading connoisseurs.

## Features

- » OPEN ROLL AWNING
- » MOTORIZED, AND CMO (CONTROL MOTOR OVERRIDE) AVAILABLE
- » CONTINUOUS MICROMETRIC PITCH REGULATION
- » AVAILABLE WITH PROTECTIVE HOOD
- » CERTIFIED ITALIAN STAINLESS STEEL SCREWS AND PINS
- » WALL, CEILING, OR ROOF INSTALLATION
- » FRONT BAR LED LIGHTING OPTION
- » PATENTED DESIGN

## WIDTH RANGE

Projection*	Max. width	Style
6'6" (78")	360" / 30'	Urban
8'4" (100")	360" / 30'	Urban
10' (120")	360" / 30'	Urban
11'6" (138")	360" / 30'	Katana
13'6" (162")	360" / 30'	Katana

\*Maximum projection indicated is calculated with arms at 0° pitch, perpendicular to the mounted wall. Increasing the pitch will decrease the projection when measured in a straight/perpendicular line from the mounted wall.

## MINIMUM WIDTH PER ARM COUNT

Projection*	2 Arms	3 Arms	4 Arms
6'6" (78")	80"	146"	191"
8'4" (100")	119"	175"	240"
10' (120")	148"	214"	279"
11'6" (138")	168"	243"	319"
13'6" (162")	190"	276"	362"

## SVET FRONT BAR LED LIGHTING OPTION



## FRAME COLORS

### POWDER COATING\* \*\*

Aluminum extrusions are painted with certified Qualicoat cycle epoxy powders.



WHITE QUARTZ



CARBON



GRANITE



CORTEN

\*RAL custom color powder coating is also available.

\*\*Plastic parts are only available in the standard colors.

Differences in color tones may occur in this brochure due to reproduction technique, therefore these finish images should not be used for final production specifications.

## FABRICS

**Corradi USA offers the highest quality acrylic fabrics for retractable awnings. Listed below are recommended standard and optional fabrics.**

### PARA TEMPOTEST USA

Vibrant and durable injection dyed acrylic and solar protection fabrics.

- SOLID ACRYLICS
- SOLID ACRYLICS FR
- STRIPED ACRYLICS

### OPTIONAL FABRICS\*

\*These are fabric brands that may be used but are not standard: Sunbrella Acrylics

**URBAN ARM:** An unprecedented retractable arm design made from the highest quality raw materials and the advanced technology of the **DAT SYSTEM** (Dynamic Arm Torsion System) come together to make the Urban arm a masterpiece.

**KATANA ARM:** Specifically designed for larger projections (11'6" and 13'6"). All of Katana's differences are internal as the exterior look and smooth function of the Katana arm is identical to Urban.



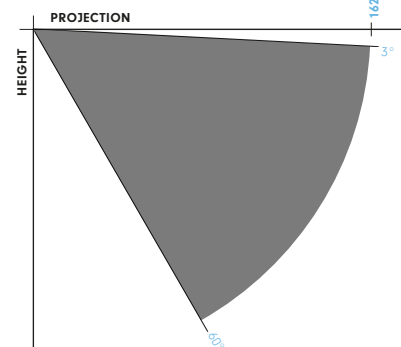
The distance between fabric and arm increases when deployed to protect the fabric.



## MOTORIZATION

SOMFY® 500 SERIES, RTS OR STANDARD. Override CMO is available

## PITCH







# Shan

Retractable Awning  
by ShadeLab



Shan is a state-of-the-art fully enclosed box cassette awning. It fully integrates with your architecture by seamlessly following the aesthetic line.

Time to align













Shan (2 above) | Pure Tech Window Fashion, Seattle WA



# SHAN Technical Data



**Shan** is majestic, surpassing all expectations. A timeless classic with a traditional architectural box design that blends perfectly with surrounding architecture. More importantly, Shan is an original design that is often imitated but never equaled. It is the ideal solution for shading large residential and commercial spaces. Everyone loves a comfortable outdoor space. Shan's classic good looks and inspiring lines invites you outdoors.

## Features

- » FULL CASSETTE PROTECTED AWNING
- » ACQUASTOP SYSTEM
- » MOTORIZED ONLY
- » CONTINUOUS MICROMETRIC PITCH REGULATION
- » CERTIFIED ITALIAN STAINLESS STEEL SCREWS AND PINS
- » WALL MOUNT ONLY
- » PATENTED DESIGN
- » RED DOT DESIGN AWARD WINNER

## WIDTH RANGE

Projection*	Max. width	Style
6'6" (78")	276" / 23'	Urban
8'4" (100")	276" / 23'	Urban
10' (120")	276" / 23'	Urban
11'6" (138")	276" / 23'	Katana
13'6" (162")	276" / 23'	Katana'

\*Maximum projection indicated is calculated with arms at 0° pitch, perpendicular to the mounted wall. Increasing the pitch will decrease the projection when measured in a straight/perpendicular line from the mounted wall.

## MINIMUM WIDTH PER ARM COUNT

Projection*	2 Arms	3 Arms
6'6" (78")	97"	145"
8'4" (100")	117"	174"
10' (120")	137"	206"
11'6" (138")	159"	236"
13'6" (138")	179"	265"

## MOTORIZATION

SOMFY® OREA – Torque Sensing Motor



## FRAME COLORS

### POWDER COATING\* \*\*

Aluminum extrusions are painted with certified Qualicoat cycle epoxy powders.



WHITE QUARTZ



CARBON



GRANITE



CORTEN

\*RAL custom color powder coating is also available.

\*\*Plastic parts are only available in the standard colors.

Differences in color tones may occur in this brochure due to reproduction technique, therefore these finish images should not be used for final production specifications.

## FABRICS

**Corradi USA offers the highest quality acrylic fabrics for retractable awnings. Listed below are recommended standard and optional fabrics.**

### PARA TEMPOTEST USA

Vibrant and durable injection dyed acrylic and solar protection fabrics.

- SOLID ACRYLICS
- SOLID ACRYLICS FR
- STRIPED ACRYLICS

### OPTIONAL FABRICS\*

\*These are fabric brands that may be used but are not standard: Sunbrella Acrylics

**URBAN ARM:** An unprecedented retractable arm design made from the highest quality raw materials and the advanced technology of the **DAT SYSTEM** (Dynamic Arm Torsion System) come together to make the Urban arm a masterpiece.

**KATANA ARM:** Specifically designed for larger projections (11'6" and 13'6"). All of Katana's differences are internal as the exterior look and smooth function of the Katana arm is identical to Urban.

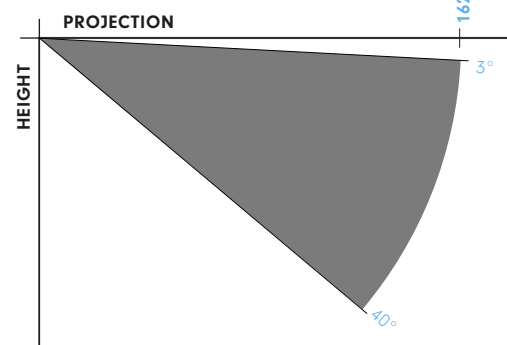


The distance between fabric and arm increases when deployed to protect the fabric.



**ACQUASTOP SYSTEM:** Favors a perfect adherence of the cassette to the wall, blocking the flow of water in case of rain.

## PITCH







# Feng

retractable awning



**Feng.** An awning that breaks the patterns of the shading industry with its fully enclosed circular cassette. A unique design element that can adapt to any architectural context. Thinking outside of the square, the new concept of shade has arrived: the well-rounded, the Feng.

Time to extend.



Open the sky





# FENG Technical Data



**Feng** is a product of thinking outside the box. It is an unparalleled part of the retractable awning revolution and impresses with its distinctive round design. It creates spacious shade to relax in complete comfort. Feng gives you more. During the day it gives shade; at night it has the option to be illuminated with LED lights, that can be included with the cassette and the arms. Compliments are guaranteed. Feng is always motorized, with the Somfy Orea torque sensing motor, easy to control with either a remote or wall switch. Strong and resilient, Feng exceeds demands for reliability. Quality is its essence, as proven in its winning the Good Design Award.

## Features

- » FULL CASSETTE PROTECTED AWNING
- » ACQUASTOP SYSTEM
- » MOTORIZED ONLY
- » CONTINUOUS MICROMETRIC PITCH REGULATION
- » CERTIFIED ITALIAN STAINLESS STEEL SCREWS AND PINS
- » WALL AND ROOF INSTALLATION
- » ARM LED LIGHTING OPTION
- » CASSETTE LED LIGHTING OPTION
- » PATENTED DESIGN
- » RED DOT DESIGN AWARD WINNER

## ARM SIZE & WIDTH RANGE

Projection*	Max. width	Style
6'6" (78")	276" / 23'	Urban
8'4" (100")	276" / 23'	Urban
10' (120")	276" / 23'	Urban
11'6" (138")	276" / 23'	Katana

\*Maximum projection indicated is calculated with arms at 0° pitch, perpendicular to the mounted wall. Increasing the pitch will decrease the projection when measured in a straight/perpendicular line from the mounted wall.

## MINIMUM WIDTH PER ARM COUNT

Projection*	2 Arms	3 Arms
6'6" (78")	105"	153"
8'4" (100")	123"	180"
10' (120")	144"	212"
11'6" (138")	162"	239"

## MOTORIZATION

SOMFY® OREA – Torque Sensing Motor



## FRAME COLORS

### POWDER COATING\* \*\*

Aluminum extrusions are painted with certified Qualicoat cycle epoxy powders.



WHITE QUARTZ



CARBON



GRANITE



CORTEN

\*RAL custom color powder coating is also available.

\*\*Plastic parts are only available in the standard colors.

Differences in color tones may occur in this brochure due to reproduction technique, therefore these finish images should not be used for final production specifications.

## FABRICS

**Corradi USA offers the highest quality acrylic fabrics for retractable awnings. Listed below are recommended standard and optional fabrics.**

### PARA TEMPOTEST USA

Vibrant and durable injection dyed acrylic and solar protection fabrics.

- SOLID ACRYLICS
- SOLID ACRYLICS FR
- STRIPED ACRYLICS

### OPTIONAL FABRICS\*

\*These are fabric brands that may be used but are not standard: Sunbrella Acrylics

**URBAN ARM:** An unprecedented retractable arm design made from the highest quality raw materials and the advanced technology of the **DAT SYSTEM** (Dynamic Arm Torsion System) come together to make the Urban arm a masterpiece.

**KATANA ARM:** Specifically designed for larger projections (11'6" and 13'6"). All of Katana's differences are internal as the exterior look and smooth function of the Katana arm is identical to Urban.

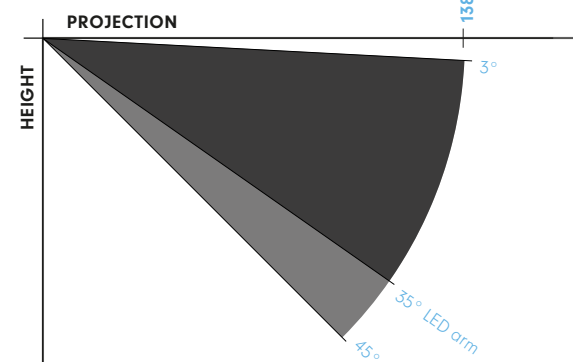


The distance between fabric and arm increases when deployed to protect the fabric.



**ACQUASTOP SYSTEM:** Favors a perfect adherence of the cassette to the wall, blocking the flow of water in case of rain.

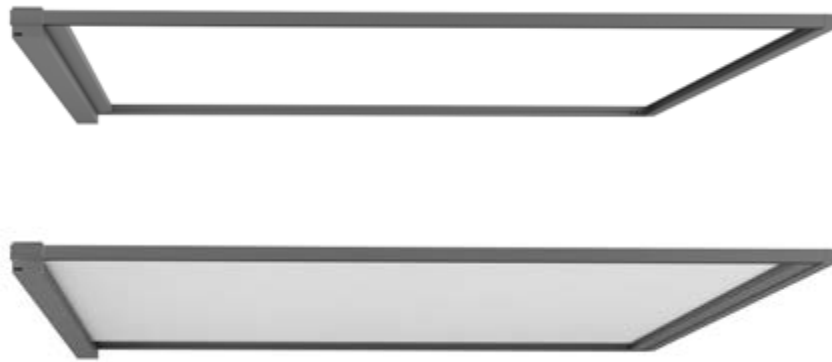
## PITCH





# Frame

retractable shade



**Frame** is a shade awning that blends with outdoor architecture in revolutionary ways. With shading fabric that traverses horizontally on rails rather than retracting arms, it is adaptable to countless outdoor living applications. This shading system is simple to use and yet so technologically advanced that it is one of the most functional innovations for outdoor shading available today.

Time to excel









Raise your outlook

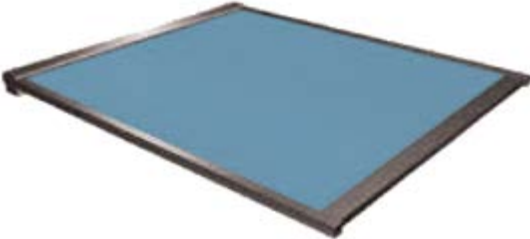


Frame



# FRAME Installation Options

**Frame** open and closed  
Maximum size 236" (19'8") x 236" (19'8")

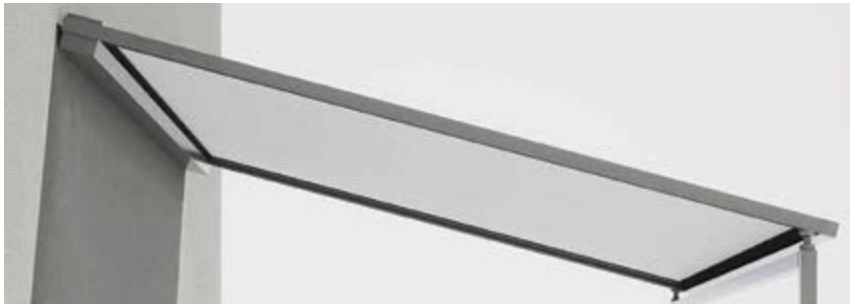


---

**Frame Stand** open and closed  
Maximum size 197" (16'5") x 197" (16'5")



# FRAME Technical Data



**Frame** is a horizontal shade that operates using tensioned tracks instead of retracting arms. This creates a smooth functional element and an architectural form that brings your outdoor space together. It provides the adaptability to shade numerous applications including windows. It is the ultimate solution for overhead shading. Frame's simple charm makes your outdoor space more functional and fascinating.

Frame introduces a new design concept to tensioned shading. Its cutting-edge tensioning system has gas pistons, a high strength drive belt and a full cassette, which ensures quiet operation and protects Frame from the elements. Available only in a motorized version that can reach sizes up to 236" x 236". It can be installed directly as the Frame on a horizontal or pitched surface with 3 different bracket options (3.4", 4.1", and 4" - 19.7" adjustable), or it can be mounted to a wall in the back and held up by the Frame Stand, a supporting front structure option. The innovative front profile closes the structure perimeter and contains the terminal profile, making Frame's design unique and unmistakable, as well as providing more stable structural options.

Frame, another architectural work of art from ShadeLab offered in North America exclusively through Corradi USA.

## Features

- » **MOTORIZED ONLY**
- » **INSTALLATION ON WALL AND WITH FEET/BRACKETS**
- » **TENSION GAS PISTONS**
- » **MAXIMUM SIZE FOR FRAME 236"(19'8") X 236"(19'8")**
- » **MAXIMUM SIZE FOR FRAME FALL 197"(16'5") X 197"(16'5")**
- » **MAXIMUM PITCH 60°**
- » **CERTIFIED ITALIAN STAINLESS STEEL SCREWS AND PINS**
- » **PATENTED DESIGN**

**Frame** open and closed  
Maximum size 236" (19'8") x 236" (19'8")



**Frame Stand** open and closed  
Maximum size 197" (16'5") x 197" (16'5")



## FRAME COLORS

### POWDER COATING\* \*\*

Aluminum extrusions are painted with certified Qualicoat cycle epoxy powders.



WHITE QUARTZ



CARBON



GRANITE



CORTEN

\*RAL custom color powder coating is also available.

\*\*Plastic parts are only available in the standard colors.

Differences in color tones may occur in this brochure due to reproduction technique, therefore these finish images should not be used for final production specifications.

## FABRICS

**Corradi USA offers the highest quality acrylic fabrics for retractable awnings. Listed below are recommended standard and optional fabrics.**

### PARA TEMPOTEST USA

Vibrant and durable injection dyed acrylic and solar protection fabrics. Para Tempotest fabrics can be used up to a 15' (180") x 15' (180") maximum on the Frame system.

**SOLID ACRYLICS**  
**SOLID ACRYLICS FR**  
**STARLIGHT BLUE**

### SERGE FERRARI

Preconstraint tension vinyl and solar protection fabrics.

**SOLTIS PROOF W96** – *Waterproof option\**      **SOLTIS HORIZON 86**  
**SOLTIS PROOF 502** – *Waterproof option\**      **SOLTIS HARMONY 88**  
**SOLTIS OPAQUE B92** – *Waterproof option\**      **SOLTIS PERFORM 92**

\*Waterproof refers to fabric only and not the system.

### OPTIONAL FABRICS\*

\*These are fabric brands that may be used but are not standard: Sunbrella Acrylics

## MOTORS

**SOMFY® OREA** – Torque Sensing Motor

Due to the flexibility of the mounting options for Frame, it can be cantilevered as well as pitched at an angle up to 60°.













# Defense

## Shade Sail



The Defense Shade Sail was inspired by extensive nautical experience. This knowledge of sail design and the materials that perform best when exposed to adverse sea conditions, has been engineered into the Defense, making it extremely weather, salinity and wear resistant.

Time to embark





Defense Shade Sail  
Outdoor Living Solutions, London Ontario, Canada



Be free

# DEFENSE Technical Data



## FRAME



STAINLESS STEEL ONLY

## FABRIC



DACRON CANVAS  
WHITE ONLY

Differences in color tones may occur in this brochure due to reproduction technique, therefore these finish images should not be used for final production specifications.

## MOTORS

SOMFY 535 CMO (MOTOR OVERRIDE) ONLY

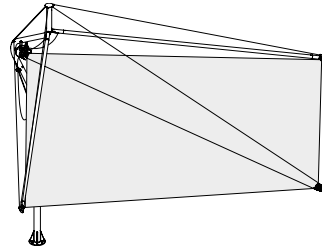
EOLIS RTS SENSOR KIT ANEMOMETER

(MOTOR CONNECTED WIND SENSOR)

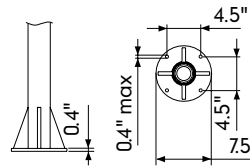
**Defense Shade Sail** is in a class of its own. A free standing shade sail consisting of a stainless steel frame and adjustable sail made of white Dacron® canvas that can be rotated up to 360°. It is motorized only and the canvas quickly winds up by using a remote-control. It does come with a CMO (control motor override) feature to manually retract and deploy the sail in case of emergency, such as a power outage. It is also fitted with an anemometer for automatically closing the sail in the event of strong wind. The self-supporting shade structure is composed of two white winding sails on a horizontal mast attached to a curved frame. The white Dacron® canvas is a woven polyester of nautical origin (with a protective treatment against UV rays) with horizontal panels creating clean lines. The sails are also connected to stainless steel supporting arms and tensioned by high tenacity Dyneema ropes. It is supported by a uniquely designed matte finish stainless steel pole and frame. A stainless steel cleaning kit is supplied to maintain the sophisticated frame finish. Down to the last detail, the Defense Shade Sail adds a touch of nautical flair to any outdoor space.

## Features

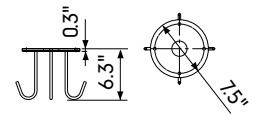
- » FREESTANDING/SELF-SUPPORTING SHADE SAIL
- » NAUTICAL DESIGN TECHNOLOGY & COMPONENTS
- » 3 INSTALLATION OPTIONS AVAILABLE
- » SALINITY AND WEAR RESISTANT
- » BRUSHED/POLISHED STAINLESS STEEL FINISH
- » STAINLESS STEEL CLEANING KIT PROVIDED
- » MOTORIZED CMO (Control Motor Override) OPERATION
- » ANEMOMETER INCLUDED
- » 360° ROTATION
- » LOW MAINTENANCE



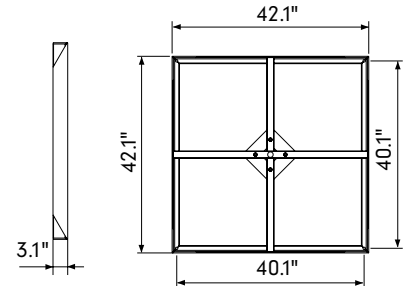
### GROUND POLE



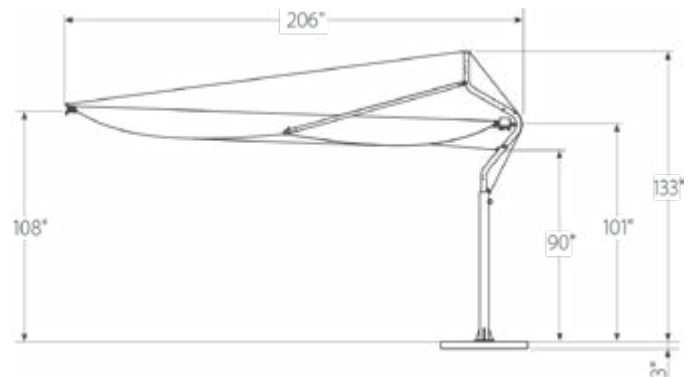
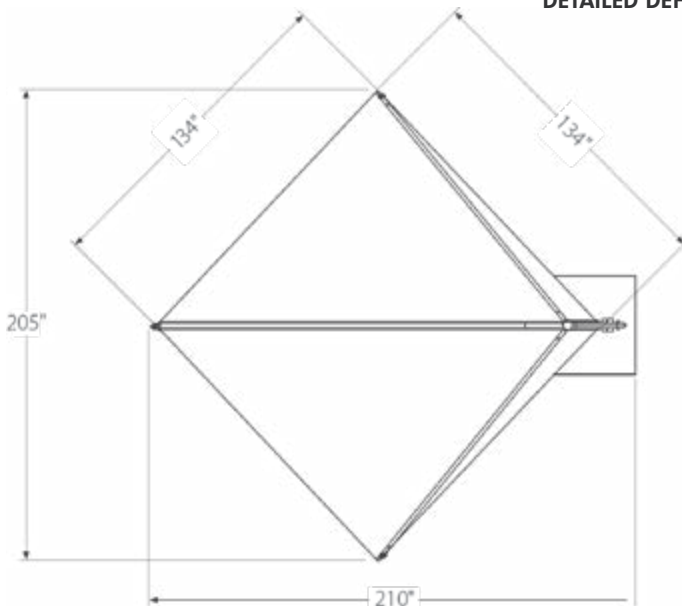
### IN-GROUND COUNTER PLATE



### BALLASTED BASE



## DETAILED DEFENSE MEASUREMENTS







## Para Tempotest® USA Acrylic Awning Fabrics

**Color and style tell your story to the world.** Tempotest® provides you the widest color and pattern selection so your story is uniquely you. Our palate is your playground. For a serene and tranquil setting, explore our blue hues. Feeling confident, bold and passionate? Red is your color choice. Playful orange and yellow evoke happiness, creativity and warmth. Tempotest allows you to express your own colorful personality.

**Whatever your story, Tempotest can help you tell it.**

Corradi USA's #1 fabric choice for awnings, Tempotest® USA has a stunning selection of solid color acrylic fabrics applicable for awnings, clear vinyl window borders or full exterior screen coverage. These fabrics are created for outdoor living solar protection and custom style.

Tempotest® fabrics integrate perfectly in any outdoor space creating a protection from the sun's UV rays, as well as adding a touch of color and elegance. Tempotest® is the leading acrylic awning fabric collection with the most comprehensive assortment of color options for screens and awnings—including both striped and solid colors—designed to fit any lifestyle.

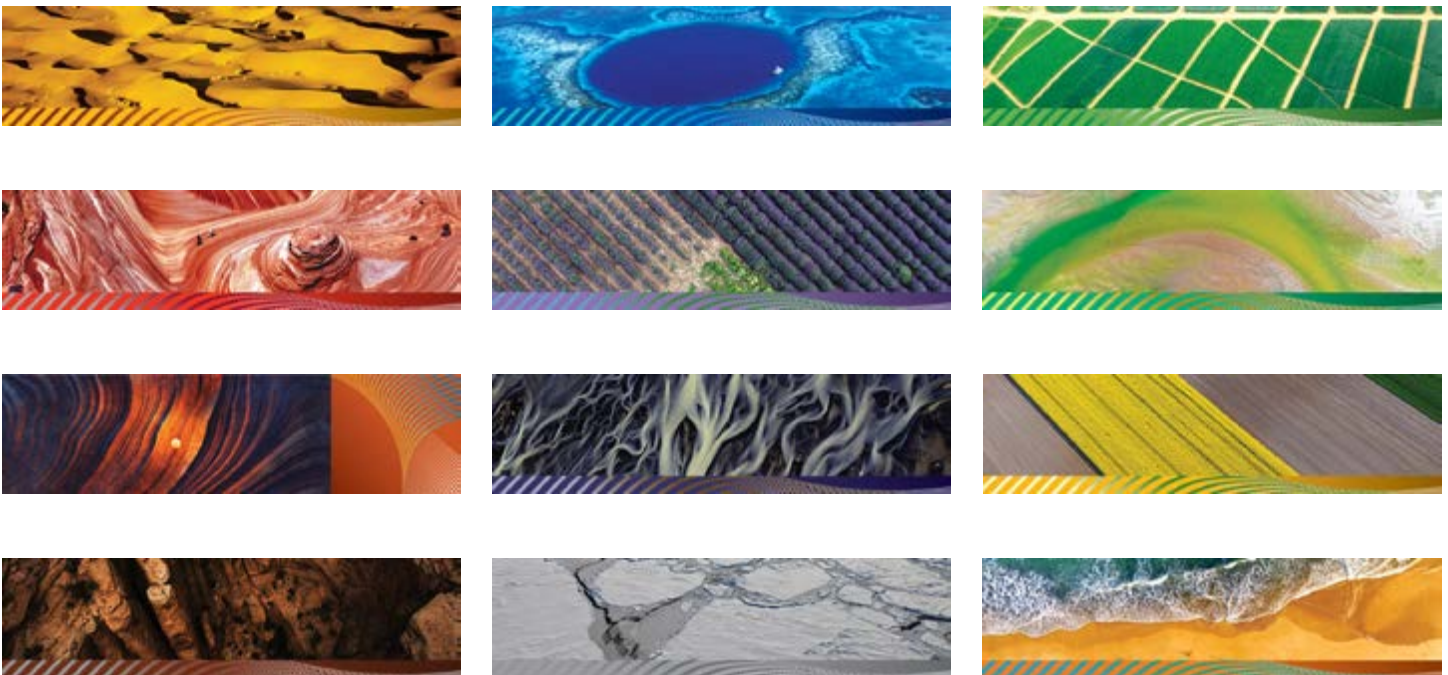
The quality of the solution dyed fiber and the innovative finishing Teflon® Extreme by Parà® fabric protector, make Tempotest® fabrics water/oil repellent, resistant to mold, stains, salt and U.V. fading.

Important collaborations with companies of the highest level has led to the creation of special and exclusive products that Parà® uses to reach the highest goals.

- Most comprehensive collection of stylish colors**
- Protection from the sun's harsh UV rays**
- Long term strength and durability**
- Fade resistant solution dyed fiber**
- Teflon® Extreme fabric coating protection**
- Easy maintenance**
- Certified by the highly respected authorities**



[www.tempotestusa.com](http://www.tempotestusa.com)



# FABRIC COLLECTION

## Dacron Shade Sail Fabric

Used on Defense Shade Sail only

White color available only

Fabric weight 11oz. per sq. yd.

100% polyester

Anti-UV finishing







Whether you want to control your exterior solar screens and outdoor shading systems at the touch of a button or use automated systems, Somfy® has the solution for all of your motorization needs.

Somfy®, the world's leading manufacturer of tubular motors, has more than four decades of experience in designing and manufacturing motors and controls, making **Radio Technology Somfy® (RTS)** the ultimate choice for the automation of exterior solar screens and outdoor shading systems. Radio Technology Somfy® (RTS) offers a high performing, reliable solution for exterior solar screen and outdoor shading motorization. Since the radio receiver is integrated within the motor, making RTS the ideal choice for hassle-free installation and quick and easy operation.



## SENSORS



### Sunis RTS Sensor Kit

This battery-operated, outdoor sensor automatically adjusts Somfy® powered exterior products based on the sun's intensity.

### Eolis RTS Sensor Kit

The Eolis 3D WireFree™ RTS Wind Sensor is a wireless, battery powered wind sensor that will automatically retract an awning based on wind generated movements.

### Soliris RTS Sensor Kit

The Soliris RTS Sun and Wind Sensor automatically controls your RTS motorized products based on current weather conditions.

## TIMER



### Chronis RTS Timer

The Telis 1 Chronis RTS combines the functionality of a single channel hand-held control with the convenience of a programmable timer. This control option is compatible with all motorized Radio Technology Somfy® applications and offers simple programming and easy operation.

## AUTOMATION CONNECTIVITY

### My Link RTS Smart Phone Interface

The Somfy® myLink™ is a simple device that turns your smartphone or tablet into a sophisticated remote control for motorized products featuring Radio Technology Somfy®. myLink now works with Alexa, IFTTT and Google Home!



## CONTROLS



### Telis RTS Remote

The Telis RTS is a convenient hand-held remote for use with any motorized product featuring Radio Technology Somfy®. It is available in a variety of colors and channels. **Available in 1 channel, 4 Channel, and 16 channel.**

### Soliris 1 Channel Remote

The Telis Soliris RTS is a hand-held remote to operate awnings, screens and shutters featuring Radio Technology Somfy®. It also has the added feature of activating an RTS sun sensor remotely.

### Decoflex Wall Switch Remote

The DecoFlex WireFree™ RTS is battery-powered and a completely wireless wall switch that provides an ideal way to control motorized products when entering or exiting a room. It is compatible with all Radio Technology Somfy® motorized products and is available in a variety of colors and channels.

## MOTOR CORDS

Somfy® offers many options for motor cords, including RTS vs Standard and plug vs no plug. The Standard Cord length for Somfy® Motors is 6' to 10' without a plug. Optional sizes may range from 3', 6', 10', 12', 18' to 24'.

# MOTOR VS MANUAL

When choosing between motorized or manually operated systems, it helps to know that motorization technology has been successfully in use for several decades and has only improved with technological advancements. Operating outdoor shading systems with a motor and adding automation features such as a sun sensor, wind sensor or even integrating the motor with home automation is extremely easy.

Corradi USA offers only the best in motorized technology, which is why we choose Somfy motors to operate our shading systems such as the Klip, Klip Pod, Svet, Shan, Feng, Frame, and Defense. We do offer one awning with a manual option, the Klip.

To help you make your decision for the best operation method for your outdoor awning, below are the benefits of motorized vs manual.



## WHY MOTORIZED?

**Necessity.** Most outdoor shade awnings are only offered motorized due to size, weight, and repeated use of systems.

**Easy use.** Push button operation by remote control or wall switch.

**Access and ability.** Whether located high up on a wall or maneuvering an exceptionally large shading system, motorization may be the only method of effective operation.

**Value and efficiency.** When shading systems are motorized, they are actually used more often because of how easy they are to operate. Especially when operating multiple systems.

**Automation and modern lifestyle.** Sensors that provide optimum protection can be added to automatically operate the system depending on weather conditions. Technological features in homes and buildings are increasingly integrated into automated solutions for synchronized convenience and style.

**Price and reliability.** The cost of adding a motorized solution to your shading system is not a significant cost in terms of the overall cost of the system. The motors offered today have the latest technology that has been developing for over 30 years worldwide. The functionality and warranties offered with motorization options today make this an easy purchasing decision.

## WHY MANUAL?

**Economical.** A manually operated system can save you money by being a no frills, least expensive method to add comfortable shading to your outdoor environment.

**No electricity available.** When the location you wish to shade does not allow for an electrical connection for a motorized system.

**Eco-friendly.** The ability to conserve energy is possible by choosing a completely manual system.



# Product Comparison Overview



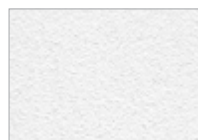
## Klip / Klip Pod

## Svet

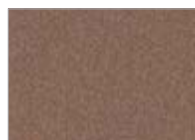
## Shan

<b>Size/Coverage (width x projection)</b>	Klip: 30'(360") x 11'6"(138") Klip Pod: 17'8"(212") x 11'6"(138")	30'(360") x 13'6"(162")	23'(276") x 13'6"(162")
<b>Pitch Range</b>	Klip & Klip Pod: 5° - 65°	3° - 60°	3° - 40°
<b>Retracted System Dimensions</b>	Klip min. pitch 5°: 8.8"p x 9.8"h, max. pitch 65°: 10.1"p x 10.5"h	Svet min. pitch 3°: 8.1"p x 8.9"h, max. pitch 60°: 9.8"p x 9.3"h	7.3"p x 10.2"h
<b>Frame Colors</b>	White Quartz, Carbon, Granite.	White Quartz, Carbon, Granite, Corten.	White Quartz, Carbon, Granite, Corten.
<b>Available Fabrics</b>	Tempotest awning fabrics, Sunbrella awning Fabrics.	Tempotest awning fabrics, Sunbrella awning Fabrics.	Tempotest awning fabrics, Sunbrella awning Fabrics.
<b>Method of Operation</b>	Manual and motorized options.	Motorized and CMO available.	Motorized only.
<b>Installation Type Options</b>	Wall mount / ceiling-soffit mount.	Wall mount / ceiling-soffit mount.	Wall mount only.
<b>Motor Type</b>	Somfy 500 Series RTS.	Somfy 500 Series RTS (option for CMO).	Somfy Orea Torque sensing motor.
<b>Automation Options</b>	Wind & sun, wind detection, timers, home automation integration ability.	Wind & sun, wind detection, timers, home automation integration ability.	Wind & sun, wind detection, timers, home automation integration ability.
<b>Other Unique Options and Features</b>	Hood option (For Klip only, not Klip Pod).	Hood option. Front bar LED lighting option.	-
<b>System Warranty</b>	5 years	5 years	5 years
<b>Motor Warranty</b>	5 years	5 years	5 years

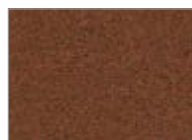
### Standard frame color choices for most ShadeLab Retractable Awnings



WHITE QUARTZ



GRANITE



CORTEN



CARBON

### Defense frame color

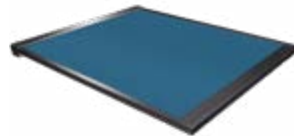


BRUSHED STAINLESS STEEL

Differences in color tones may occur in this brochure due to reproduction technique, therefore these finish images should not be used for final production specifications.



**Feng**



**Frame**



**Defense**



	Feng	Frame	Defense
<b>Size/Coverage (width x projection)</b>	23'(276") x 11'6"(138")	Frame: 236"(19'8") x 236"(19'8") Frame Stand: 197"(16'5") x 197"(16'5")	11'2"(134") x 11'2"(134")
<b>Pitch Range</b>	3° - 45° regular arm, 3° - 35° LED arm	0° - 60°	No pitch. 360° rotation.
<b>Retracted System Dimensions</b>	wall: 9.6"p x 8.8"h, soffit: 10.4"p x 10.7"h	–	–
<b>Frame Colors</b>	White Quartz, Carbon, Granite, Corten.	White Quartz, Carbon, Granite, Corten.	Brushed stainless steel (only).
<b>Available Fabrics</b>	Tempotest awning fabrics, Sunbrella awning fabrics.	Tempotest solid awning fabrics (up to 15'x15'), Tempotest Starlight Blue, Serge Ferrari Soltis Precontraint collection (86, 88, 92, 502, & W96).	Dacron (available in white only).
<b>Method of Operation</b>	Motorized only.	Motorized only.	Manual and motorized.
<b>Installation Type Options</b>	Wall mount only.	<b>Frame</b> mounts to surface with foot-brackets. <b>Frame Stand</b> mounts with back wall brackets and a front supporting structure.	Ground pole, in-ground counter plate, ballasted base (all freestanding).
<b>Motor Type</b>	Somfy Orea Torque sensing motor.	Somfy Orea Torque sensing motor.	Somfy 535 RTS CMO.
<b>Automation Options</b>	Wind & sun, wind detection, timers, home automation integration ability.	Wind & sun, wind detection, timers, home automation integration ability.	Wind & sun, wind detection, timers, home automation integration ability.
<b>Other Unique Options and Features</b>	Front Bar LED lighting option. Arm LED lighting option.	Side-track zipper to keep fabric taut.	Anemometer included standard.
<b>System Warranty</b>	5 years	5 years	5 years
<b>Motor Warranty</b>	5 years	5 years	5 years











“Why Corradi?”



**For over 40 years** we have been designing solutions that create more enjoyment of outdoor spaces. And for over 10 years we have brought our design solutions to the USA. We have come a long way from being a small artisanal workshop in 1978. Today we are the state-of-the-art shading technology industry leader with worldwide distribution. We were the first to patent the product that is the benchmark of shading, the perfect combination of a pergola and a sun shade. In addition to Pergotenda®, we also offer Louvered Roof pergolas, Exterior Solar Screens and various unique shading systems so we can offer the best outdoor living solutions in the business. We have the same drive and enthusiasm today that brought our company to life in the beginning. The same drive to develop new innovations and be open to other perspectives. The desire to reimagine outdoor living spaces of tomorrow. We step into your shoes and ask ourselves—

## “Why Corradi?”

- We have the most comprehensive line of outdoor living shading products in the industry.
- Refined Italian design and engineering heritage is combined into our products with American manufacturing expertise.
- We are the holder of numerous patents that guarantee exclusivity and technical expertise.
- Pergotenda® and many other industry leading innovations have been created and are made only by Corradi.
- We have 40+ years of dedicated outdoor living design experience.
- Our products are custom made and can be personalized for virtually any commercial or residential application.
- We have an open dialogue with the world of architecture and design and this inspires us to constantly improve.
- Our nationwide network of Dealers are chosen, prepared and trained to be the best in providing exceptional service.
- We believe in the uniqueness of people and in teamwork
- Our mission is to empower you to fully enjoy your outdoor living space.





General Coordination & Contents by  
**Marketing & Communications Corradi USA**

Photography provided by Corradi USA, ShadeLab, and the following dealers:

**Advanced Blinds and Awnings - Coeur d'Alene, ID**  
**Awnimation - Carrollton, TX**  
**New Haven Awning - New Haven, CT**  
**Opdyke Awnings - Belmar, NJ**  
**Outdoor Living Solutions - London, Ontario, Canada**  
**Pure Tech Window Fashion - Seattle, WA**  
**Eide Industries - Cerritos, CA**

Special thanks to  
**Our Dealers for being the best**

credits

**DISCLAIMER:** This brochure, the information, technical features, product descriptions, names, images, photographs, reproductions, trademarks contained herein are an exclusive property of Corradi Srl & Corradi USA and are subject to the according norms for trademarks, patents, royalties, intellectual property and unfair competition. Without written authorization by Corradi, any reproduction, even partial, of the information, technical features, descriptions, names, images, photographs, trademarks in this brochure is prohibited. The manufacturer may modify or improve the products in this brochure without dispute. Differences in color tones in this brochure may occur and depend on the reproduction technique.

THE  
outdoor  
ALCHEMIST



**Corradi USA**  
1910 North Josey Lane, Carrollton, TX 75006  
T +1 800 882 8393 • F +1 800 778 7329  
info@corradiusa.com  
**corradiusa.com**

