



# Lynden Door™

RESIDENTIAL | INTERIOR DOORS



We invite you to discover what **over 40 years** of wood door manufacturing experience can bring to your next project.

A 3rd generation, **family-owned company** located in the beautiful Pacific Northwest, Lynden Door, Inc. builds **residential, commercial** and **architectural** doors suited for nearly every type of application or market segment, no matter the scale, location or complexity. Our **customization capabilities** and **wide breadth of interior door** styles and designs will offer a solution for any of your decor and building needs.

Lynden Door has a unique history of serving God through supporting the needs of its employees, their families and evangelical ministries in the community of Lynden, WA and beyond.

We trust that you will find our passion for crafting beautiful, durable, high quality doors and providing exceptional customer service is distinctly evident.

**We are genuinely grateful for your business and support.**



# SERVICES | OPTIONS



**FIRE DOOR** Any of our solid core interior panel doors are available with a 20-minute fire rating for your “House To Garage” application. Lynden Door also offers a full suite of neutral and positive pressure fire doors for 20, 45, 60 and 90-minute rated applications.



**STC** Sound transmission control up to STC 46. Lynden Door offers sound rated doors to meet the demands of high-sound impact areas found in both residential communities and businesses near airports, high traffic areas and other noise pollution.



**SUSTAINABLE** With a history of commitment to environmental stewardship, Lynden Door is responsive to the green programs and materials in our marketplace. Meeting current government emissions standards, LEED-compliant options are available for virtually every door we make.



**GLAZING, VISION LITES, AND APPLIED MOLDING** Factory door prep and machining for in-house lite installations and applied moldings open opportunities for unique design choices such as interior French doors that match your solid core panel doors and our Lynden Ventilated Doors.



**CUSTOM ROUTING AND INLAY** Add design flair to wood veneer or painted flush doors with custom CNC routed lines and angles. Ask us about inlays.



**FACTORY FINISHING** Lynden Door offers a variety of factory finish options for all your design needs - clear and custom factory finishes and durable non - marring custom painting - all of which are produced under very strict quality controls and contain no VOC's (Volatile Organic Compounds).



**FACTORY MACHINING FOR HARDWARE** Lynden Door is fully equipped to carry out the most demanding and complex machining instructions and hardware preparations with automated precision.

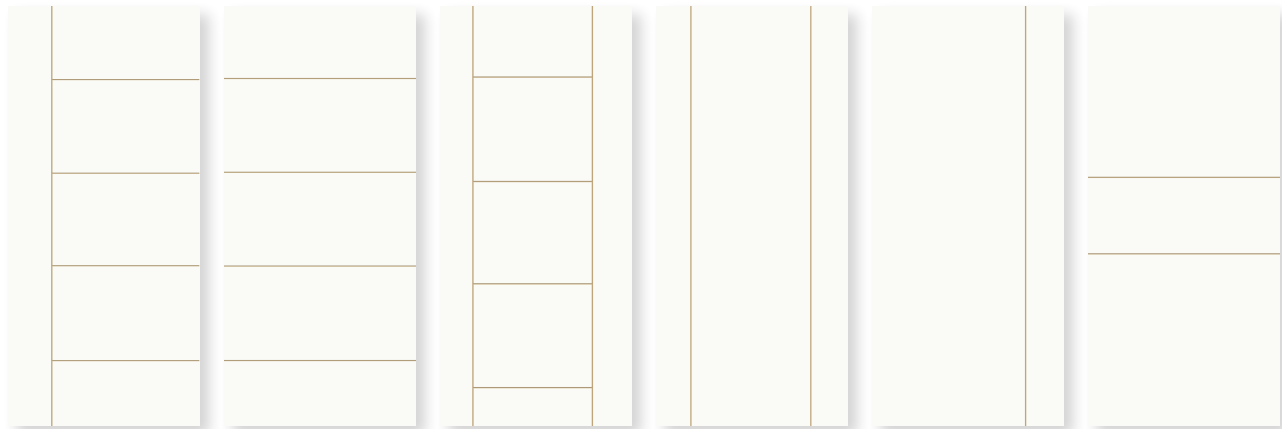
VISIT [LYNDENDOOR.COM](http://LYNDENDOOR.COM) FOR MORE DETAILS | FOLLOW US @LYNDENDOORINC

# FINE | LINE

## Minimalistic. Contemporary.

FineLine doors by Lynden Door bring a fresh, stylish appearance to any interior space.

FineLine's grooved profile lines are positioned to bring linear dimension as a modernizing accent or simply to bring structure to contemporary spaces.



**ALKI**  
6'8" | 7'0" | 8'0"

**DENMAN**  
6'8" | 7'0" | 8'0" | Bifolds

**ROBSON**  
6'8" | 7'0" | 8'0" | Bifolds

**PARKROSE**  
6'8" | 7'0" | 8'0" | Bifolds

**LAURELHURST**  
6'8" | 7'0" | 8'0"

**MONTLAKE**  
6'8" | 7'0" | 8'0" | Bifolds

All FineLine profiles are available in 6'8", 7'0" and 8'0" heights.

Alki, Denman and Robson 8'0" door designs feature 6 panels.

Bifolds are available in the Denman, Montlake, Parkrose and Robson designs. Match Alki doors with Robson or Denman bifolds and Laurelhurst with Parkrose bifolds.



Photo Credit: @stoneandstiletto



## A modernizing solution to contemporary spaces.

- Smooth, routed MDF surface is ready for paint.
- Route lines are .20 inches wide, .045 inches (+/- .005) deep with a 30 degree bevel providing an easily paintable surface within the groove lines.
- Six standard profiles offered in 6'8" with optional 7'0" and 8'0" heights. Up to 4'0" wide, greater widths available special order.\*
- Groove aligned paired doors and 4-door bifolds are available as special order.\*
- Profile lines positioned to accommodate most hardware locations.
- 1-3/8" and 1-3/4" thickness, hollow and solid core available.
- FineLine bifolds available in the following profiles: Robson, Denman, Parkrose, Montlake.
- Up to 90-minute fire rating available as Category A or B.\*
- Available as a ventilated door

\*Contact your Lynden Door representative for more information.



Photo Credit: @stoneandstilettos

Doors pictured: FineLine Denman, 8'0", painted in Sherwin-Williams® Iron Ore.

# STILELINE® COLLECTION

The excitement of European styling with an opposing grain creates a bold, modern look at an attractive price. \* ♦

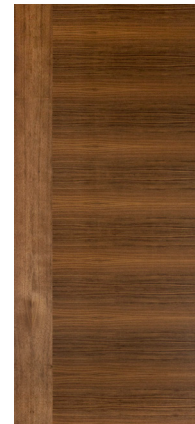
- Hollow or solid core
- Matching bifolds
- 1-3/8" and 1-3/4"
- Rated / non-rated options
- Custom options
- Available as a ventilated door



**WHITE MAPLE**  
Sketch-Face | Plain Sliced



**WHITE OAK**  
Sketch-Face | Rift Cut



**BLACK WALNUT**  
Sketch-Face | Quarter Sawn



**AFRICAN MAHOGANY**  
Sketch-Face | Quarter Sawn



StileLine Black Walnut

## Pacific Collection and ClearLine Factory Finish

Lynden Door's Pacific Collection and ClearLine Factory Finish offers a state of the art VOC free, ultraviolet cured custom stain or clear finish.

The highly affordable finishes are available with all wood veneer doors. See page 11 for more information.

\* Available with Pacific Collection and ClearLine Factory Finish.

♦ Horizontal grain pair matches are not available. Pleasing matches available by special order.

# REDISCOVERY COLLECTION

FINELINE

STILELINE |  
REDISCOVERY

WOOD VENEER

VENTILATED DOOR |  
ELEMENTAL

PREFINISHED  
HARDBOARD

MOLDED & FLUSH



The Rediscovery Collection provides contemporary and custom expressions in vertical grain, horizontal grain or sketch-face designs, species and finishes. \* ♦

- Hollow or solid core
- Matching bifolds
- 1-3/8" and 1-3/4"
- Rated / non-rated options
- Custom options
- Available as a ventilated door



**TABLEAU**  
Horizontal Grain  
Shown in Walnut



**RHYTMUS**  
Sketch Face  
Shown in Jatoba



**COMPOSITION**  
Inlays  
Shown in Maple / Sapele







# WOOD VENEER

Lynden Door wood veneer doors provide the beauty and warmth of natural wood and one of a kind, unique wood grain patterns. All wood veneers are pre-graded to ensure defect-free surfaces. Ask your Lynden Door distributor for matching wood jambs and millwork.

- Hollow or solid core
- Matching bifolds
- 1-3/8" and 1-3/4"
- Rated / non-rated options
- Special order wood veneers available
- Available as a ventilated door



**RED OAK**  
Plain Sliced



**WHITE MAPLE**  
Rotary Cut



**MAHOGANY**  
Rotary Cut



**NATURAL BIRCH**  
Rotary Cut



**UNIFORM LIGHT BIRCH**  
Rotary Cut





CLEAR | 00



GOLDEN | 10



HOMESTEAD | 20



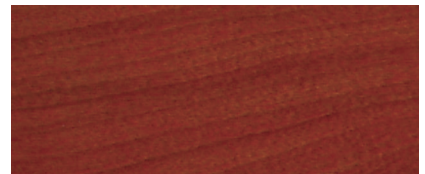
AUTUMN | 30



SIENA | 40



ESPRESSO | 50



MAGENTA | 60

## Pacific Collection

The Pacific Collection is a carefully composed array of stain colors and ClearLine applied to specific wood veneer by skilled technicians in a tightly controlled production environment. Due to their excellent stainability, we offer Pacific Collection stains for **Natural Birch, Red Oak** and **White Maple**. Stain colors shown with White Maple wood veneer.

- 100% colorfast, stains consist of organic earthen pigments
- Non-flammable, does not influence flame spread rating or smoke density
- Ultraviolet inhibitors keep the finish “water white” (clear)
- Protects and slows the natural aging of the wood
- Custom color matches available

Photographs are a close approximation of stain colors. Do not make final color selection based on this page. Contact Lynden Door for stain veneer samples to provide a closer representation of the finished appearance. Actual COLOR and GRAIN may vary from the EXAMPLES shown above.

# LYNDEN VENTILATED DOOR

## Comfort and Well-Being.

The Lynden Ventilated Door challenges the traditionally held views of what a door is supposed to do.

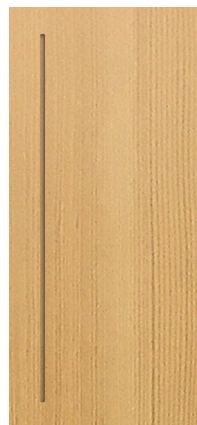
Ventilated doors offer air flow pathways promoting comfort and well-being in your home and reduces the need for vents, grilles, dropped ceilings and ducting which can interfere with surrounding design elements and aesthetics.



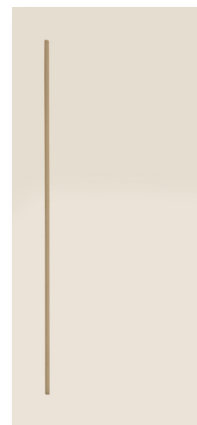
Ventilated Elemental 2-Panel



VENTILATED RIFT CUT MEDIUM WALNUT



VENTILATED COASTAL HEMLOCK



VENTILATED PRIMED HARDBOARD



VENTILATED ELEMENTAL 2-PANEL



### AIRFLOW PATHWAY

Air flows in from one side, through the door core and out the opposing side.



### SOUND PRIVACY

Lab-tested baffling and resonators are integrated into the door core to block high and low frequency sound.

- Create comfortable room environments by alleviating temperature, humidity and pressure build up
- Reduce carbon dioxide build-up for healthier spaces
- Keep laundry appliances and bathroom exhaust fans running efficiently
- Improve ventilation without the use of unsightly vents and grilles
- 1-Year Limited Interior Warranty
- Available with StileLine®, ReDiscovery, FineLine, wood veneers, Elemental, prefinished and primed hardboard door styles
- 1-3/8" and 1-3/4" Non-rated

**VanAir™** Ventilated Door

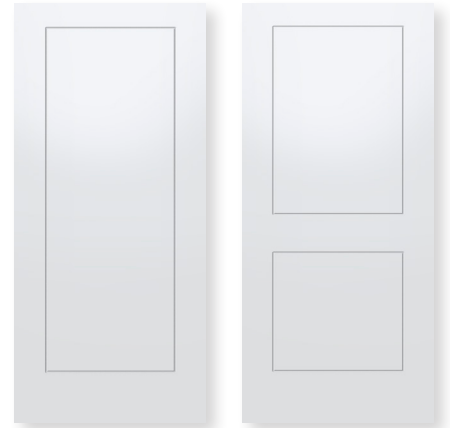


# ELEMENTAL COLLECTION

Elemental door designs are characterized by clean, simple lines. Offering a modern take on traditional wood and molded doors, the 1- and 2-Panel door designs allow room for interpretation in any architectural and interior design environment.

- Smooth, bevel grooved MDF surface, ready for paint
- 6" stile width easily accommodates door hardware (6" stile width on doors wider than 2'0" and up to 4'0", 5" stile width on doors 2'0" and under)
- 10" bottom rail meets most disability access requirements
- Up to 90-minute fire rating available.\*
- Offered in 6'8", 7'0" and 8'0" heights
- 1-3/8" and 1-3/4" thickness, hollow and solid core
- Matching bifold doors available.\*

\*Contact your Lynden Door representative for more information



**ELEMENTAL 1-PANEL**

**ELEMENTAL 2-PANEL**



**ELEMENTAL VENTILATED 1-PANEL**



**ELEMENTAL VENTILATED 2-PANEL**

## Ventilated Door Option

Elemental doors are well suited for the ventilated door construction, opening opportunities to contemporary door design for all your interior door openings.





# PREFINISHED **HARDBOARD**



Rift Cut Medium Walnut

## **Durable. Stable. Affordable.**

Prefinished Hardboard doors by Lynden Door arrive ready to install with a factory applied, uniform finish that is durable and low maintenance.

- 1-3/8" and 1-3/4" hollow or solid core construction
- 1-3/4" 20 & 60-minute rated fire doors
- Door skins made from industrial grade MDF board
- Several finish options available with color coordinated pre-painted wood edges
- Available as a ventilated door



**RIFT CUT  
SLATE**

Textured



**RIFT CUT  
MEDIUM WALNUT**

Textured



**RIFT CUT  
COFFEE**

Textured



**RIFT CUT  
TEAK**

Textured



An affordable alternative to wood veneer flush doors, our Prefinished Hardboard doors offer a painted, grain printing process in a variety of colors. This technology is perfect for residential and commercial applications such as single-family homes, multi-family apartments, assisted care, and hospitality projects where a prefinished surface is desired at an affordable price.

Offered in a variety of surface finishes in a wide color spectrum from light to dark and traditional to contemporary.



**CRYSTAL WHITE**  
Embossed



**BEAUPORT WALNUT**  
Embossed



**MENDOCINO OAK**  
Embossed



**WESTERN HEMLOCK**  
Smooth



**COASTAL HEMLOCK**  
Smooth



**ALBANY MAPLE**  
Smooth



**ALPINE OAK**  
Smooth



**NEWPORT CHERRY**  
Smooth

Photographs are a close approximation of stain colors and may vary from actual products. Please contact Lynden Door for prefinished hardboard color samples.



Beauport Walnut

FINELINE

STILELINE |  
REDISCOVERY

WOOD VENEER

VENTILATED DOOR |  
ELEMENTAL

PREFINISHED  
HARDBOARD

MOLDED & FLUSH

# MOLDED & FLUSH

## Uniquely Versatile.

Stable Performance. No cracking or panel separation. Superior Value.

Compelling design and customizing opportunity at a significant value versus solid wood doors. All Lynden Door molded and flush panels are factory primed, pre-graded and acclimated before fabrication to produce top quality, stable surfaces. Molded and flush door panels offer an ideal substrate for finish painting.



**MERCER**

Smooth | Flat Panel

**WHITMAN**

Smooth | Flat Panel

**ABERDEEN**

Smooth | Flat Panel

**YARROW**

Smooth | Flat Panel

**WINTHROP**

Smooth | Flat Panel

- Molded fiberboard facings resist joint separation
- Hollow or solid core
- Matching bifolds
- 1-3/8" and 1-3/4" in 6'8", 7'0" & 8'0" (See sizing guide for more information.)
- STC and fire rated options



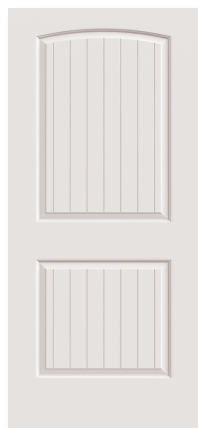
Aberdeen



**KINGSTON**  
Smooth | Raised Panel



**ROSARIO**  
Smooth | Raised Panel



**LOPEZ**  
Smooth | Raised Panel



**BENTON**  
Smooth | Raised Panel



**COLUMBIA**  
Smooth | Raised Panel



**PRIMED**  
Smooth & Textured options



Aberdeen

Molded doors have become a major influence in the residential and light commercial built environment.

Lynden Door's extensive collection of smooth and textured molded and flush door designs suits virtually every taste and decor. Offered in raised and flat panel profiles, molded panel doors are an attractive fit for traditional and contemporary spaces with flexible construction in hollow or solid core and rated/non-rated options.

Primed Flush doors are available smooth and textured, hollow or solid core and with rated/non-rated and ventilated door options.

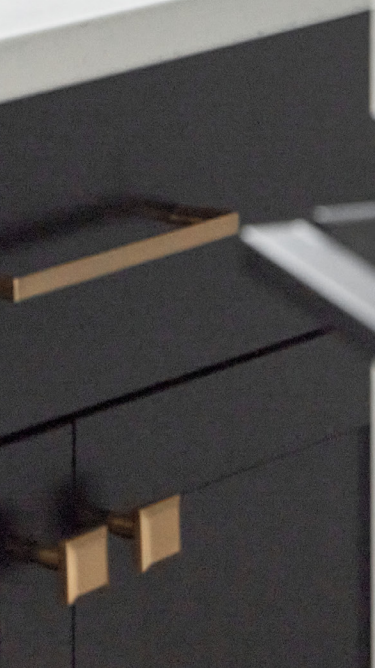


**BLAKELY**  
Textured | Raised Panel



**BONNEVILLE**  
Textured | Raised Panel







**Door sizing is divided into two basic categories:** Molded Panel and Flush doors.

Molded panel doors are available in a standard range of sizes, based on our ability to configure the molded panels – please consult the chart.

**Flush doors STANDARD RANGE:** 1'0" to 4'0" in width, up to 8'0" in height. Custom sizing is available, however, some restrictions may apply. Flush doors include: wood veneer; StileLine® sketchface veneer and the ReDiscovery Collection; prefinished hardboard; and high pressure decorative laminates (not shown in this brochure). Flush doors are not constrained by panel lay-out like molded panel doors and are available in a great variety of sizes.

**Sizing Notes:** Lynden Door wholesale distributors add significant value and convenience by maintaining large inventories of standard size doors for competitive pricing and fast delivery. Custom sizing is a common service at Lynden Door and we thrive on accommodating your special needs at an affordable price. However some restrictions may apply.

Lynden Door fabricates **Standard** height doors with wider top and bottom rails: 2" – 2-1/4" after trim. This allows for site trimming of doors up to 1" on each end without compromising the warranty.

**Door face stiles 4-1/8"** or smaller **do not** accommodate a **2-3/4" back-set** preparation. Please contact your Lynden Door representative for non-stock stile width measurements

**Blended Offering:** Lynden Door's unique product portfolio offers residential, architectural (LD), and commercial (CD) doors all made in one facility. This blended offering allows us to meet the needs of even the most diverse specification as we can draw from the strengths of all three door series.

2077 MAIN ST., P.O. BOX 528  
LYNDEN, WA 98264

**PHONE:** 800.631.DOOR (3667)  
**FAX:** 360.354.5676

INFO@LYNDENDOOR.COM



@LYNDENDOORINC | LYNDENDOOR.COM

**Lynden Door**  
Open Your Future



LD550 06/23 CCP 45K ©2023 Lynden Door, Inc. All rights reserved. Printed in USA.