



WallNova Architectural Products Co.,Ltd.

Tel:+86 20 3488 1222

Fax:+86 20 3488 1830

Mob:+86 158 1466 6615

Email:info@wallnova.com

Office: Energy Conservation and Science Park, PanYu Ave, PanYu District, GuangZhou, China.

Factory: DongSheng Industry Zone, ShiJi Town, PanYu District, GuangZhou, China.



Where Architectural Happen

C O N T E N T S

▶ ABOUT WALLNOVA

▶ METAL CLADDING

▶ METAL CEILING

▶ SUNSHADE LOUVER

▶ PROJECT GALLERY



QUALITY GUARANTEE

- ◆ 15 Years' Design, Production and Installation Experience
- ◆ 10 Million US Dollar Registered Capital
- ◆ 20,000 SQM Workshop
- ◆ 60 Million USD Sales Volume
- ◆ 6,000 SQM Aluminum Ceiling and Cladding/Day
- ◆ 45 Airport & Railway Station choose Merlan (No.1 in China)

INCLUDE

Three Biggest International Airport

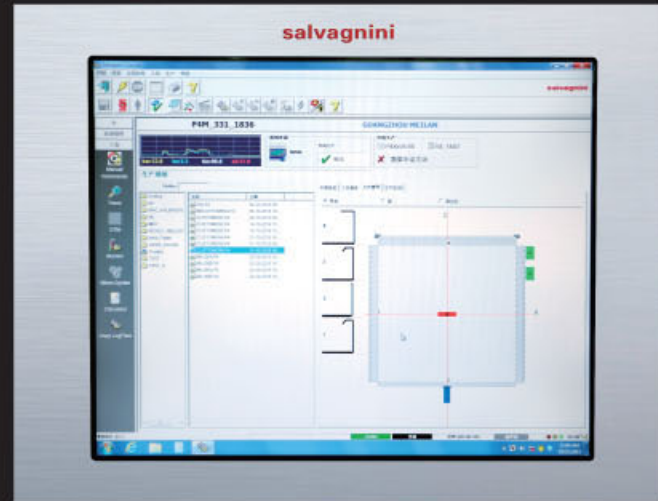
BeiJing International Airport
GuangZhou International Airport
HongKong International Airport

Three Biggest High-Speed Railway Station

GuangZhou South Railway Station
WuHan Railway Station
ZhengZhou Railway Station

ADVANCED FACILITIES

- The first and only completed set in China for metal cladding and ceiling production.
- The Salvagnini's most popular solutions S4+P4 line with L3 Fiber carving, it loading material, punching, shearing and bending metal sheet totally automatically,
- The most efficient flexible manufacturing system (FMS) on the global market with precisely dimension control.





ADVANCED FACILITIES

METAL CLADDING ▶



Amada CNC machine
Japan

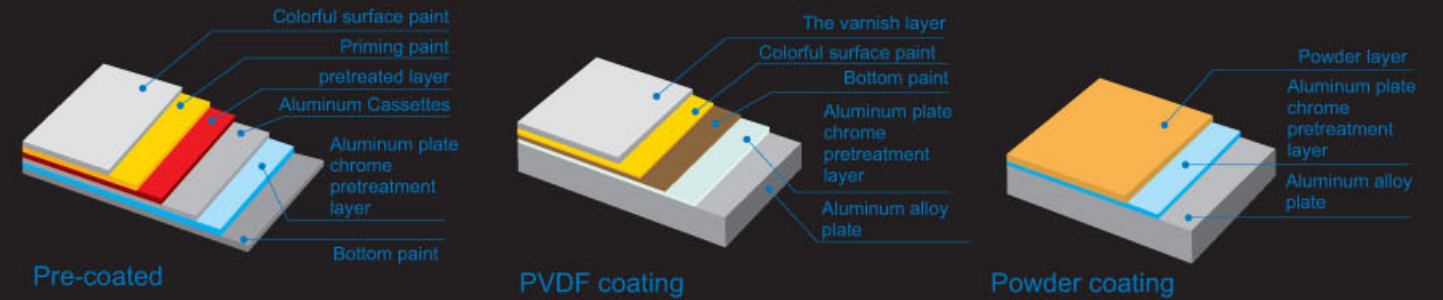


Painting line
Japan and Switzerland

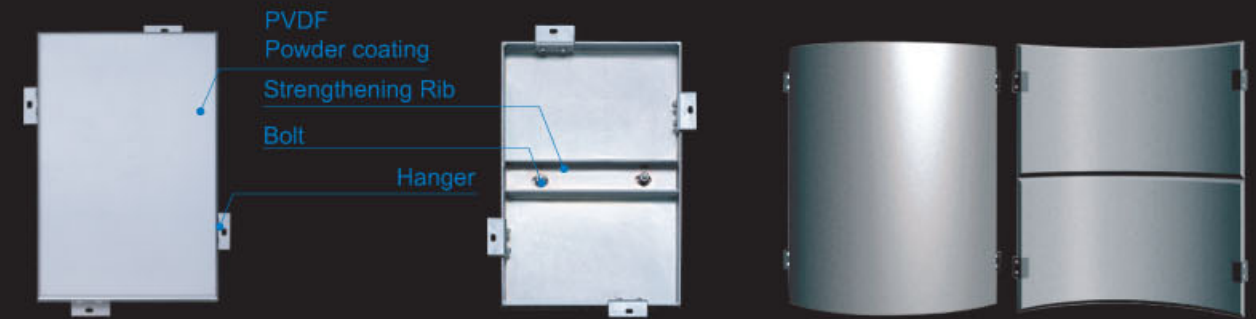


The scope of application of aluminum cassettes

Aluminum cassettes is applied to a variety use of interior and exterior wall, lobby facade, awning, decorative columns, elevated corridors, pedestrian bridges, elevators package edge, balcony, advertising signs, interior decoration and other special-shaped ceiling.



The Structure Of Aluminum Cassettes



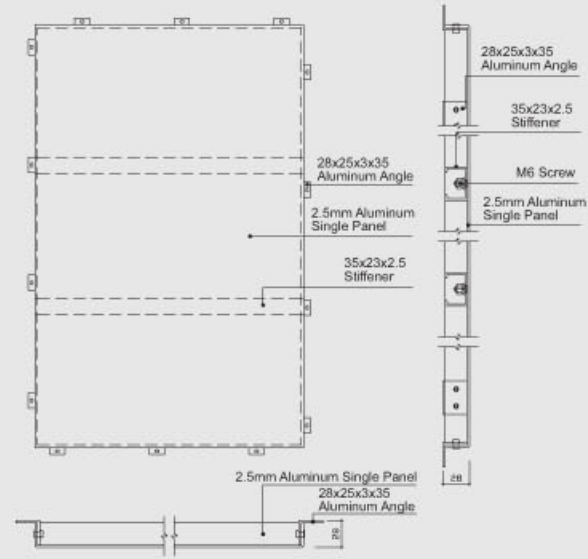
Bending Features



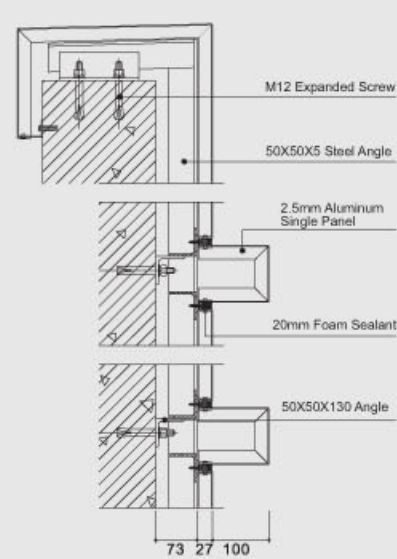
Performance

Aluminum Alloy Model	Tensile Strength(n/mm ²)	Yield Strength (n/mm ²)	Extensibility (%)	Bending Inside Radius (Thickness is 2mm)
A5052H44	230-280	180	More Than 5	R=2mmX2.5
A3003H44	210-265	180	More Than 4	R=2mmX2

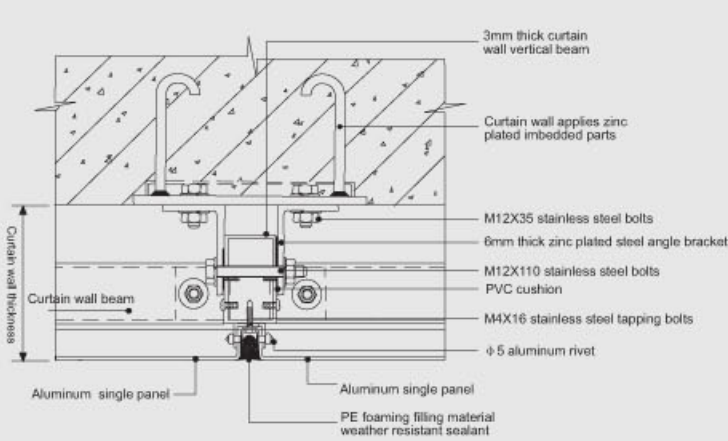
Fixing Details Of Aluminum Cassetts



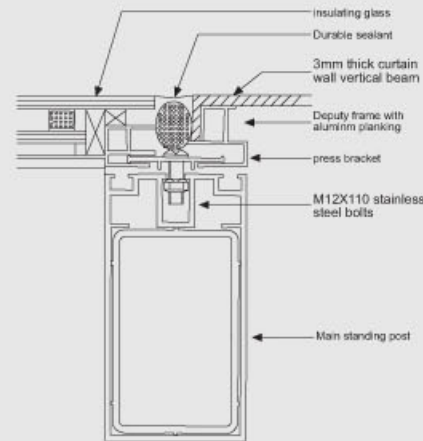
Plan Drawing Of Aluminum Cassetts



Side View Installation Drawing of Curtain Wall



Fixing details of Aluminum cassetts



Fixing details of Aluminum cassetts and glass curtain wall

PVDF COATING OF ALUMINUM CASSETTES

■ The PVDF Coating

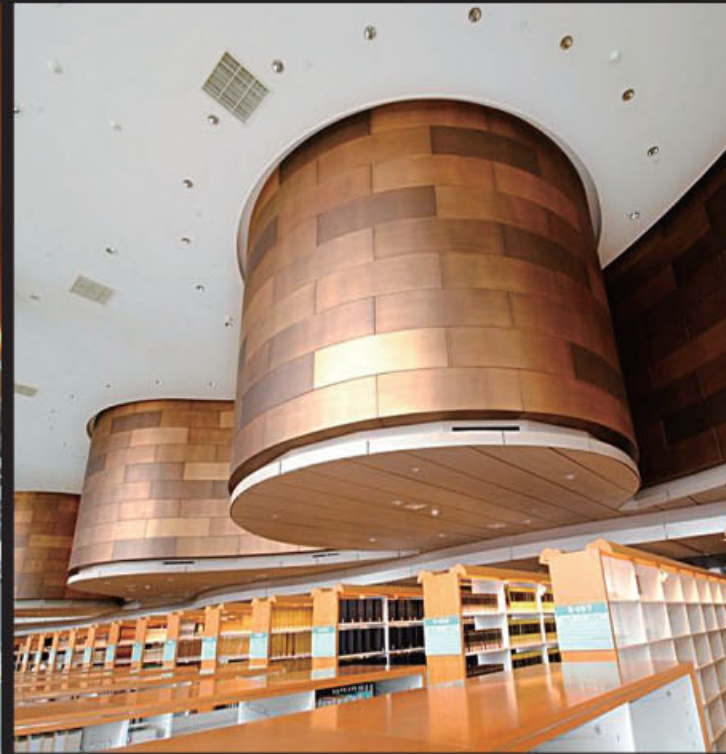
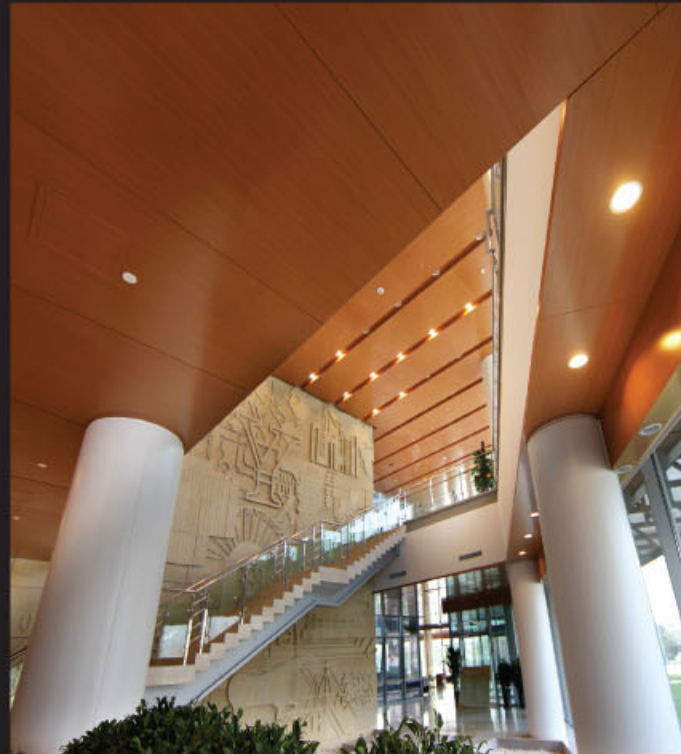
- The F-C combination power of carbon atom and fluorine atom with the largest minus electric charge can reach 105.4dcal/mol. That means at least, you need more than 105.4kcal/mol to destroy the F-C combination.
- The distance of F-C combination is 1.36A. It is shorter than the distance of C-C combination 1.54A. It is hard to destroy the combination of F-C because of solid block caused by F-atom. Its struction are so colselly.
- Akzo Nobel, PPG, DUPONT is the most popular brand of PVDF paints which we use on overseas projects..



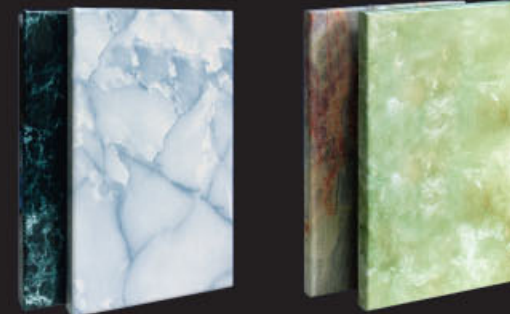
WOODEN SURFACE ALUMINUM CASSETTES



Wooden surface cassettes made by high-strength aluminum alloy, this international fashion decorative materials with vivid color, texture, pattern firmly close to original wood style., formaldehyde-free, non-toxic, non-harmful gas emissions, and is the preferred material for architectural decoration. Wood color create a green living ideas and space., widely use on cafes, clubs and other places of leisure.

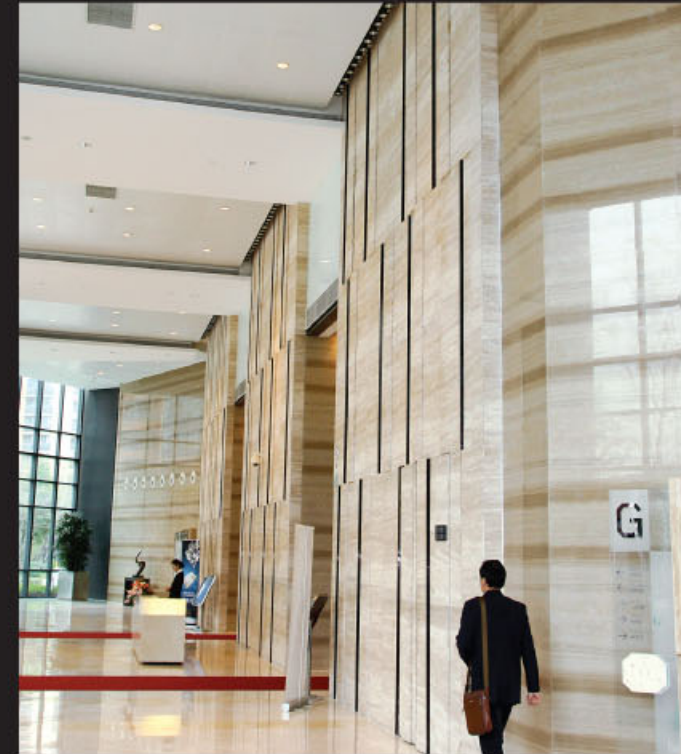


IMITATION STONE ALUMINUM CASSETTES



Imitation Stone Surface Aluminum Cassettes

- ◆ Marbled pattern
- ◆ Pvd coating
- ◆ Shape, thickness can be customized to demands
- ◆ Simple installation and maintenance,
- ◆ Quality Assurance, durable
- ◆ Green material, 100% recycled

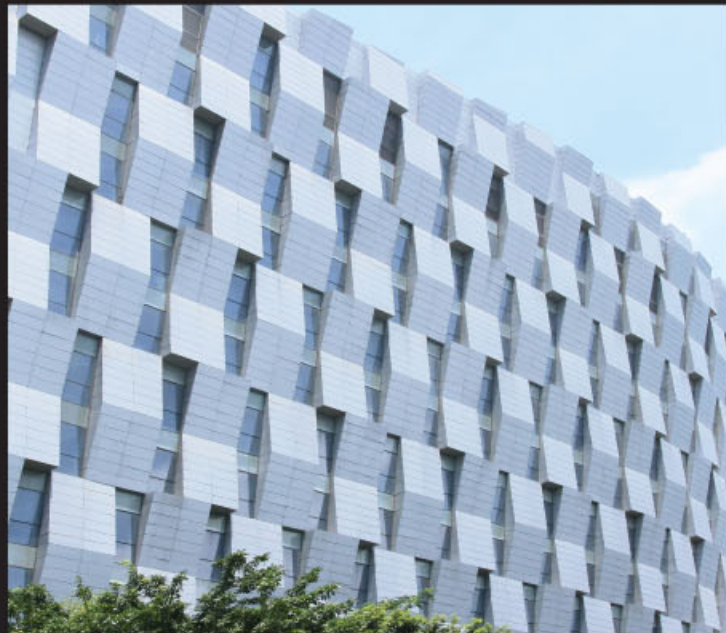
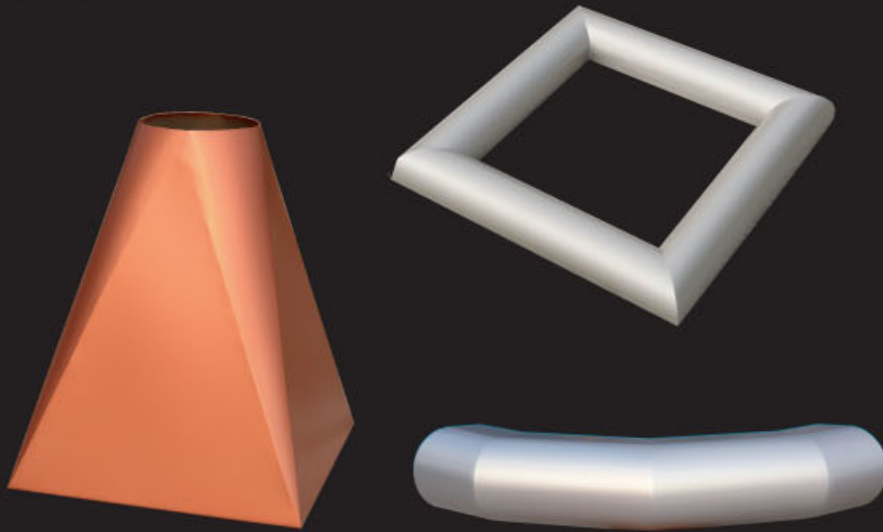


IRREGULAR SHAPE METAL PANEL

Irregular cassettes is made by CNC machine with perfectional double-curved software.

Producing according to project demand.

Color, size, thickness, shape, suspension systems are customized.

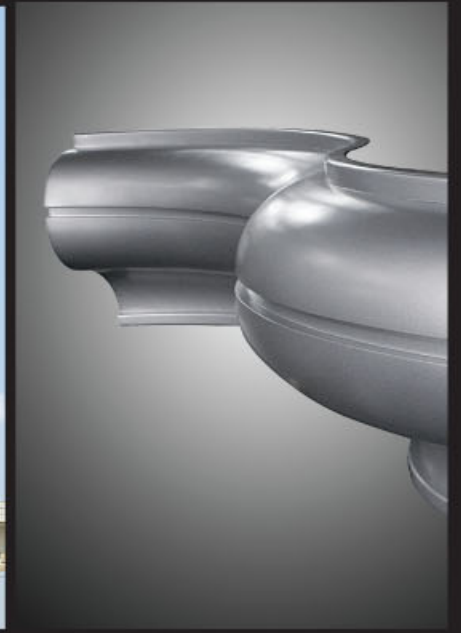


DUAL CURVED CASSETTES

Dual curving panel is produced by CNC machine with moulds create by independent software.

The dual curving panel brings precious idea and visual feast to the designer.

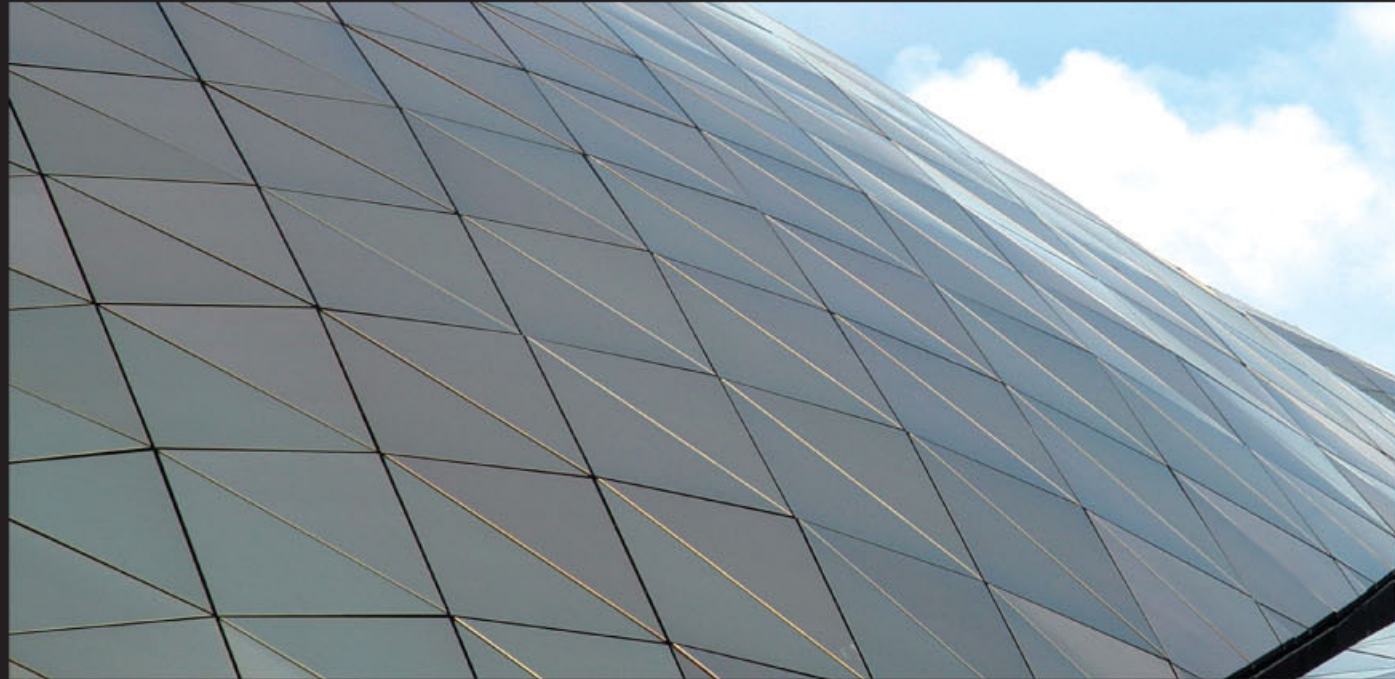
Make architects' idea come alive.



NORMAL ALUMINUM CASSETTES



- ◆ Sleek lines, a strong sense of hierarchy.
- ◆ Color, sheet thickness available for customization and choice.
- ◆ Excellent weather resistance and corrosion resistance and long service life.
- ◆ Easy installation and maintenance cost savings.
- ◆ Quality assurance and durability.
- ◆ Aluminum alloy can be 100% recycled.



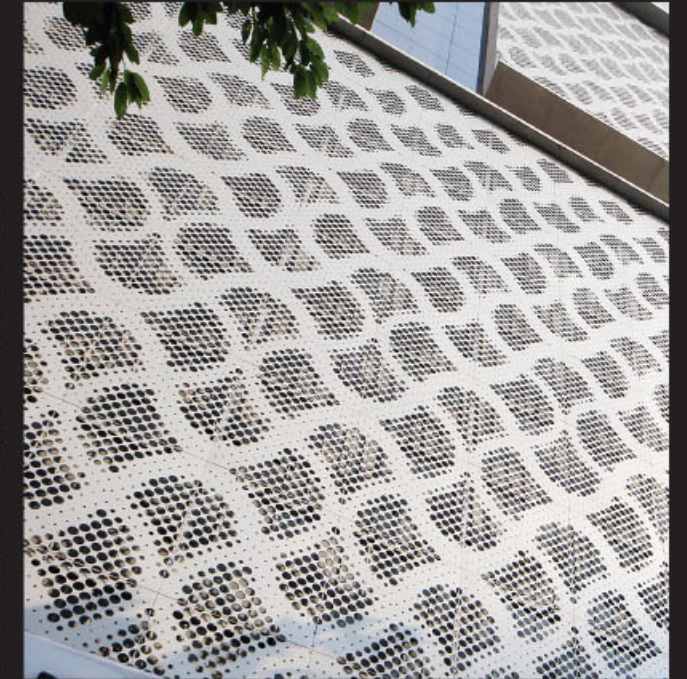
ARTISTIC CASSETTES



Unique design of Aluminum cassettes extend the sense of building.

This new decoration format is present the future technology of facade design works.

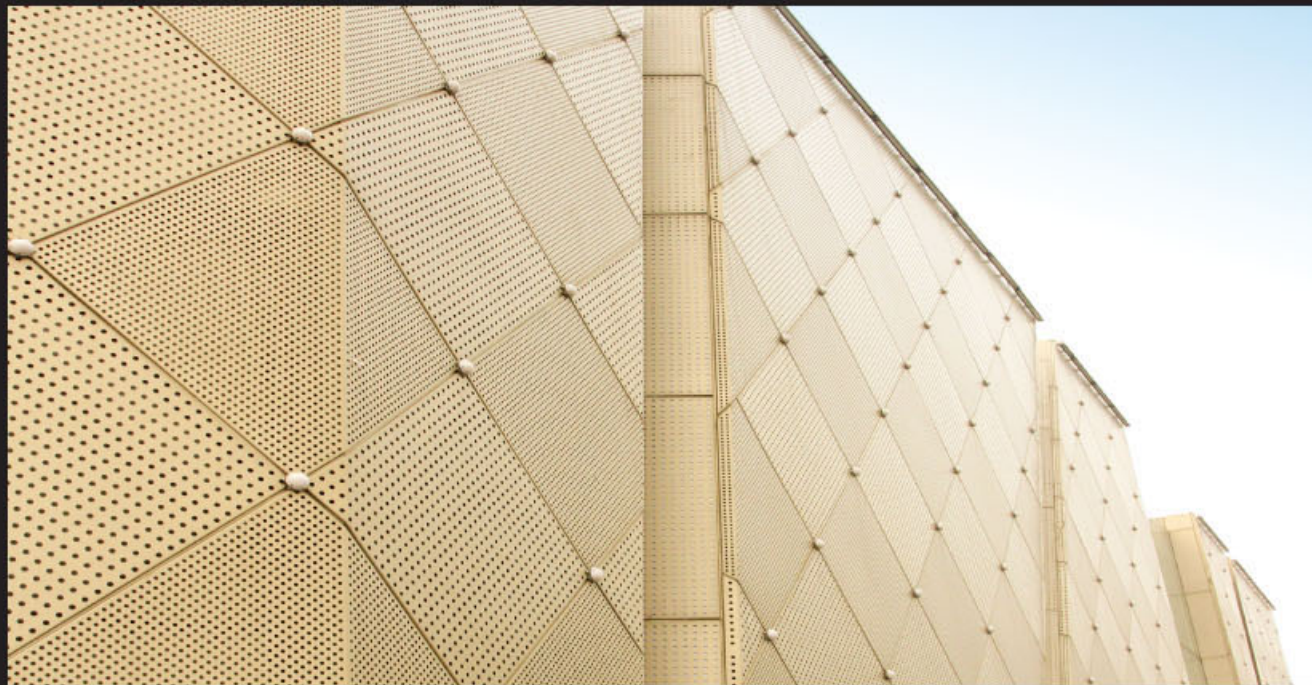
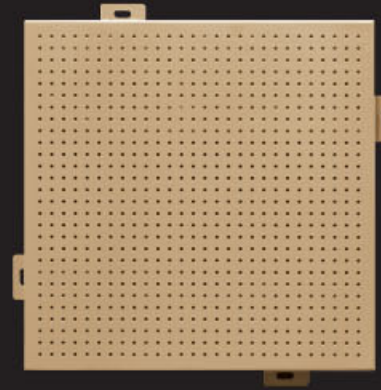
Our job to to helping our client make their ideas of cladding to be truly case.



PERFORATED ALUMINUM CASSETTES

Perforated aluminum cassettes is the most popular format for cladding and ceiling in the world, it can create thousand of patterns by change the diameter and line of holes.

Perforated cassettes can be use for Ceiling, cladding, including columns decoration, slab decoration etc, wherever you want to hang them up, to make difference and designing languages.



METAL MESH CEILING & CLADDING



Aluminum & steel mesh size diagram

SWD - short way of diamond
LWD-long way of diamond
BOND-where two strands intersect
STRAND THICKNESS-length of the metal used to produce one strand
LWM(width)-mesh sheet size,the distance of lwd direction
SWM(length)-mesh sheet size,the distance of swd direction.

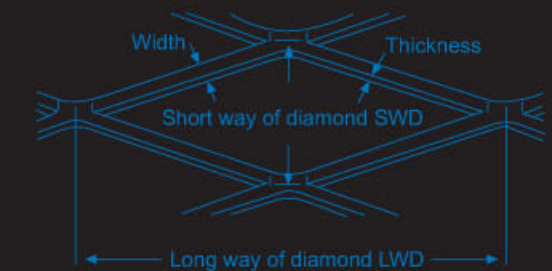
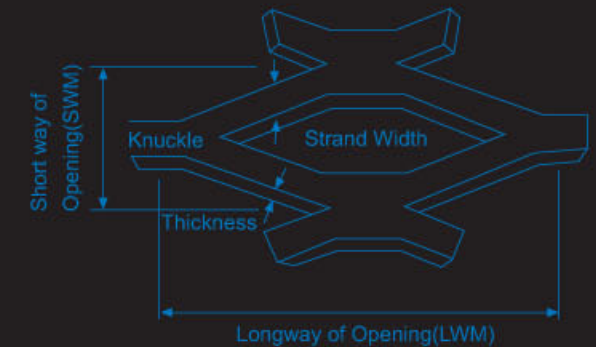
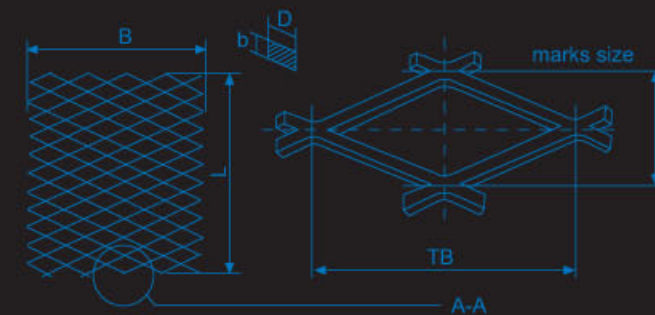
Aluminum & steel mesh

Material: Aluminum panel,nickel plate,AL-Mg alloy plate.

Mesh hole shape:Diamond,square hole.

Application:This product is longlife,it is widely used in Filters the protecting of electrical equipment,window, safety door,room dividers,decorative ceiling,highway fence,civil buiding,concrete reinforcement,walkway,anti-dazzle panels,plaster trims,fan covers.

SPECIAL DESIGN OR SIZE ARE AVAILABLE ON PROJECT DEMAND.



EXPANDED METAL MESH ALUMINUM METAL MESH

STEEL/ALUMINUM PLATE MESH

Materials:stainless steel,low carbon steel,brass plate,Aluminum plate,titanium plate,nickel plate,Al-Mg alloy plate.

Hole shape:diamond,square hole,scale hole.

Application:this product is everlasting,it is widely used in Filters baskets,air filtration units,Medicine,Machine guards, animal cages,the protecting of electrical equipment window,Safety door & window,room dividers,Decorative ceiling, Highway fence,civil building,Concrete in for cement,Walkway,Anti-dazzle panels,Plaster trims,Fan covers.

Special designs or sizes is also available at customers'request.

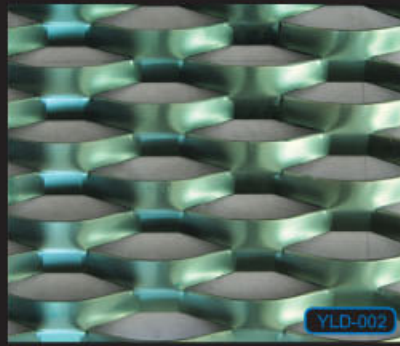
EXPANDED METAL PROCESS

- ① Metal plate is advanced beyond the face of the bottom die one strand width.
- ② The top die then descends,slits and forms an entire row of half diamonds.
- ③ The top die then ascends and moves one half of a diamond to the right as the base sheet of plate moves forward one strand width.
- ④ The top die descends,slits and forms another full row of half diamonds completing a row of full diamonds.
- ⑤ The die then ascends and above steps are repeated continuously.

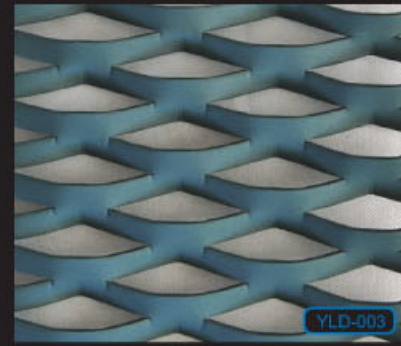
Expanded METAL TERMINOLOGY



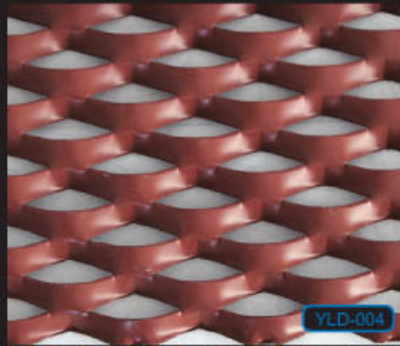
YLD-001



YLD-002



YLD-003



YLD-004



YLD-005



YLD-006



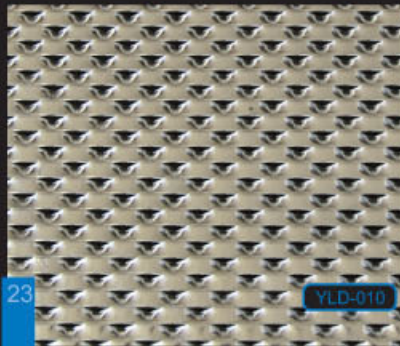
YLD-007



YLD-008



YLD-009



YLD-010



YLD-011



YLD-012

SWD-short way of diamond

LWD-long way of diamond

BOND-where two strands intersect

STRAND WIDTH-length of the metal used to produce one strand

STRAND THICKNESS-gauge thickness

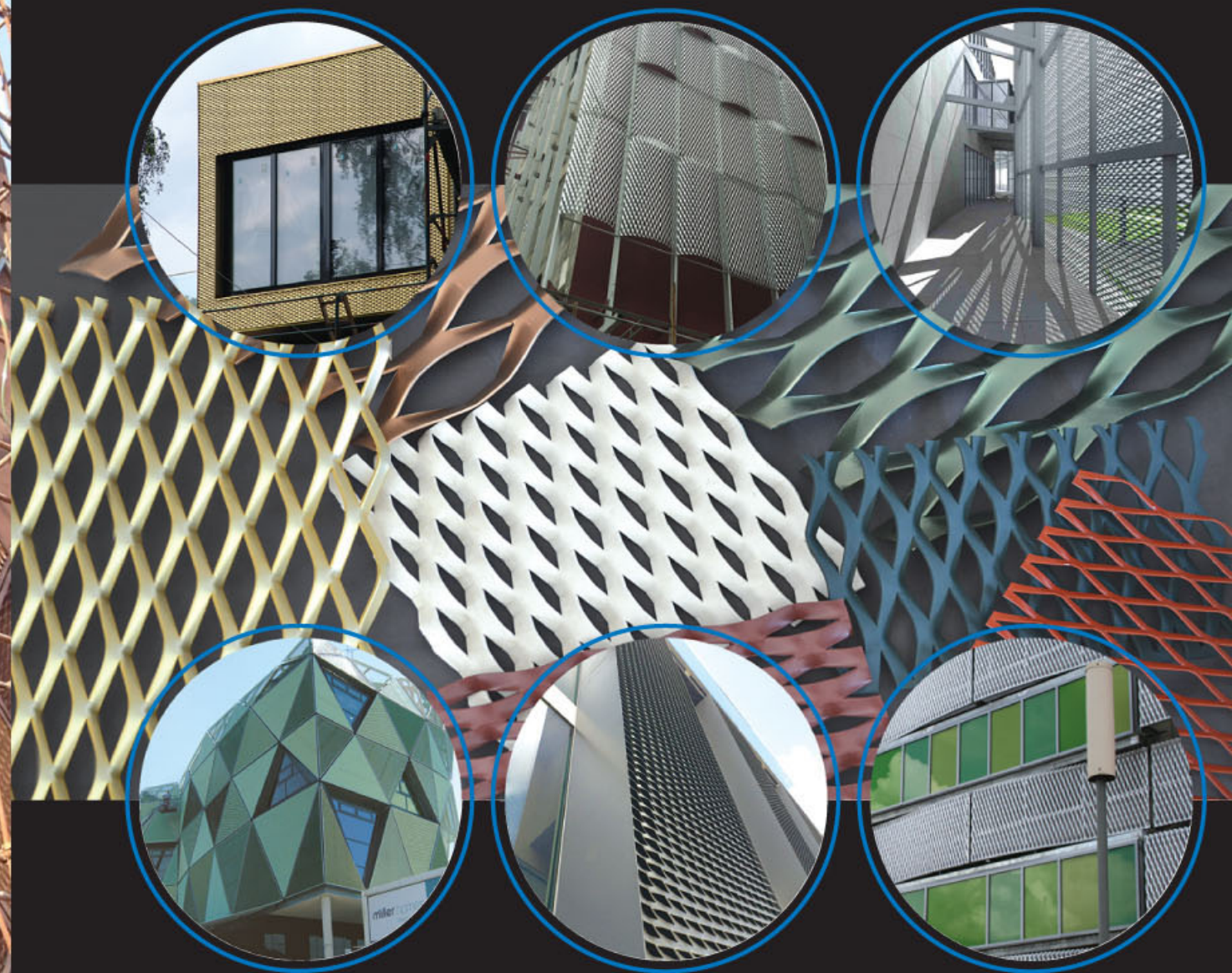
LWM(width)-mesh sheet size,the distance of lwd direction

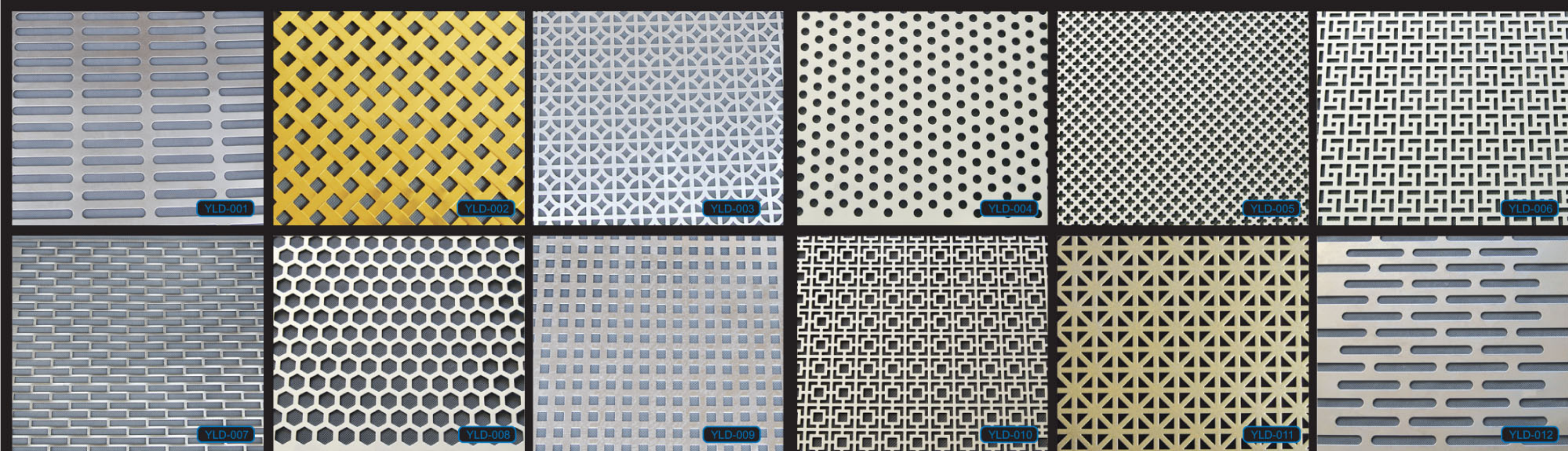
SWM(length)-mesh sheet size,the distance of swd direction

Species	JIS CALL	(mm) Mesh size		(mm) Strand size		Weight kg/m ²	Standard *method L×S(mm) Weight(kg/slice)		
		SWD	LWD	T	W		914 × 1829	1219 × 2438	1524 × 3048
XS(XF)	XS31	12	30.5	1.2	1.5	2.36	3.95	7.01	11.0
	XS32	12	30.5	1.6	2.0	4.19	7.01	12.5	19.5
	XS33	12	30.5	2.3	3.0	9.03	15.1	26.8	41.9
	XS41	22	50.8	1.6	2.0	2.28	3.81	6.78	10.6
	XS42	22	50.8	2.3	2.5	4.10	6.86	12.2	19.0
	XS43	22	50.8	3.2	3.5	8.00	13.4	23.8	37.2
	XS51	25	61.0	1.6	2.5	2.51	4.20	7.46	11.7
	XS52	25	61.0	2.3	3.0	4.33	7.24	12.9	20.1
	XS53	25	61.0	3.2	4.0	8.05	13.5	23.9	37.4
	XS61	34	76.2	2.3	3.0	3.19	5.33	9.48	14.8
	XS62	34	76.2	3.2	4.0	5.91	9.88	17.6	27.5
	XS63	34	76.2	4.5	5.0	10.4	17.4	30.9	48.3
	XS71	50	152.4	2.3	3.5	2.53	4.23	7.52	11.8
	XS72	50	152.4	3.2	4.0	4.02	6.72	11.9	18.7
	XS73	50	152.4	4.5	5.0	7.06	11.8	21.1	32.8
	XS81	75	203.2	3.2	4.0	2.68	4.48	7.96	12.4
	XS82	75	203.2	4.5	5.0	4.71	7.88	14.0	21.9
	XS83	75	203.2	6.0	6.0	7.54	12.6	22.4	35.0
	XS91	115	304.8	3.2	5.0	2.18	3.64	6.48	10.1
	XS92	115	304.8	4.5	6.0	3.69	6.17	11.0	17.1
XS93	155	304.8	6.0	7.0	5.74	9.60	17.1	26.7	



ALUMINUM EXPANDED METAL APPLICATION





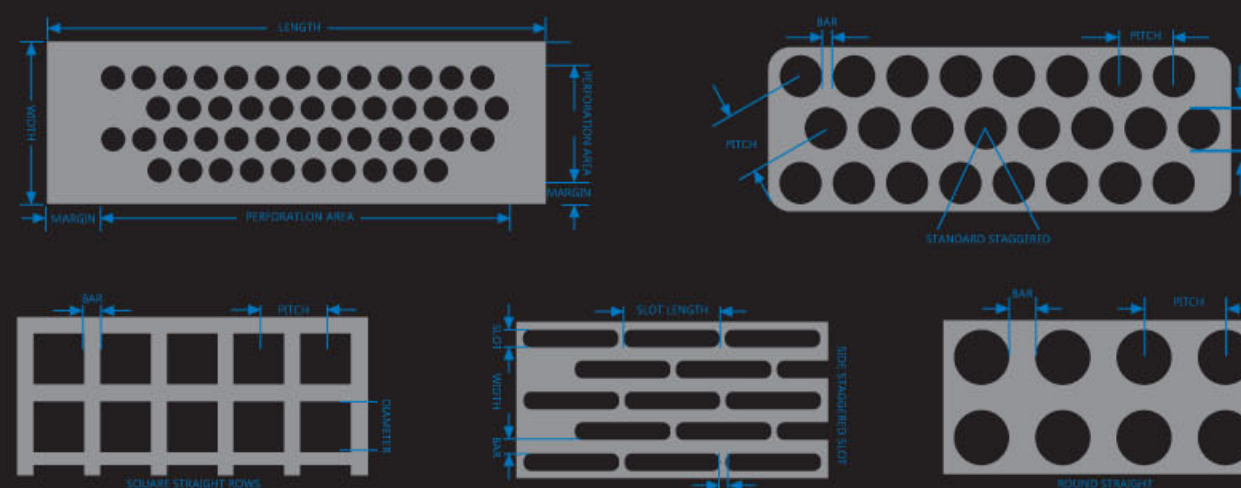
■ Perforated Metal Sheet

Materials: Carbon steel, aluminum, stainless steel, galvanized steel, pp sheet, pvc sheet, cooper, wood board etc.

Categories: cnc perforating, cnc turret perforating, laser cutting, water jet cutting, coil to coil perforating, coil to pieces perforating, etching etc.

The characteristic of perforated metal: can be readily formed, accuracy of size, can be painted or polished, superior abrasion resistance, easy installation, attractive appearance, wide range of thickness available, largest selection of hole size pattern and configurations, uniform sound abatement, light weight, excellent wear life and durable.

Application: perforated metal mesh is widely used in chemical machinery, pharmaceutical equipment, food and beverage machines, cigarette machines, harvesters, dry-cleaning machine, ironing table, silencing equipment, refrigeration equipment (central air conditioning), speakers, crafts, papermaking, hydraulic fittings, filtration equipment and other industries.



PERFORATED METAL APPLICATION



HOOK-ON CEILING SYSTEM



- ◆ **Material:** aluminum or galvanized steel
- ◆ **Surface Treatment:** powder coating or pre-painted
- ◆ **Thickness:** 1.0-2.0mm
- ◆ **Size:** on request
- ◆ **Color:** RAL color and wooden grain colors are available for choice Plain and perforated panels are optional, for perforated panels with black felt, sound absorption

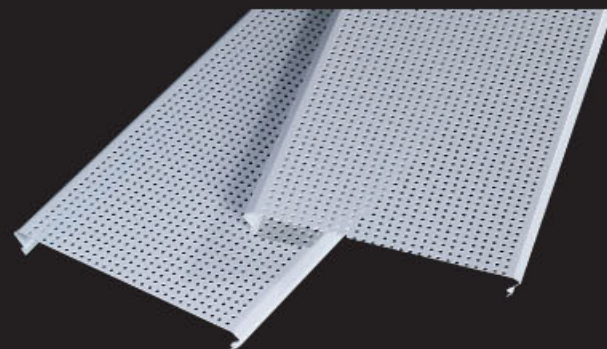
METAL CEILING ▶



LINEAR CEILING

Linear ceilings series is manufactured with aluminum alloy plate .

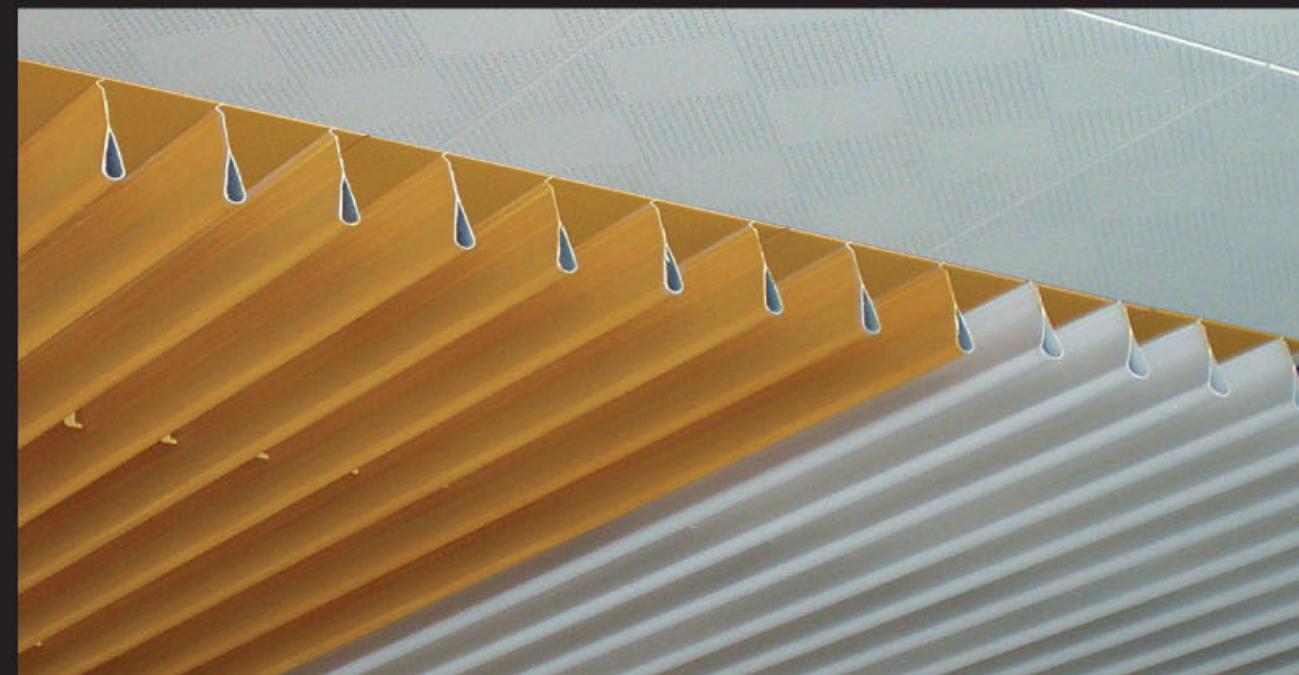
The connection brings people a comfortable feeling of space, it can be installed with different structures, and combing the slab and bars with different width and arc according to the design idea



WATERDROP SCREEN CEILING



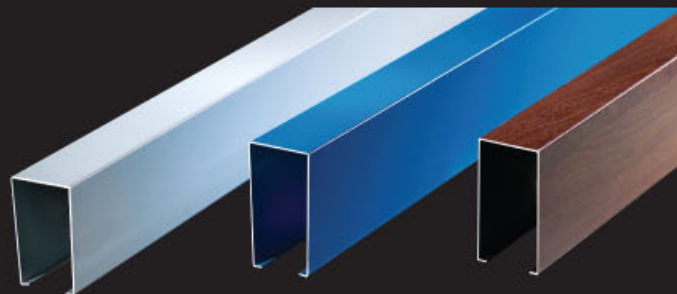
- ◆ **Material:** aluminum
- ◆ **Surface treatment:** powder coating or pre-painted
- ◆ **Thickness:** 0.8-1.5mm
- ◆ **Color:** RAL color and wooden surface are available.



BARRIER CEILING

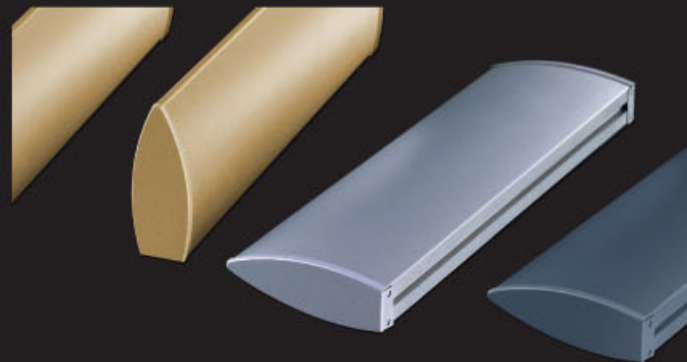
A decorative curtain type ceiling, able to adjust the visual height of space, and can hide all the pipelines and other facilities in the bottom of the building.

It enables an open field of vision, good ventilation and air flow, the connection lines are bright and neat, with clear levels, reflecting the concise modern style, simple and convenient in installation assembly and dis-assembly.



BULLET-SHAPED CEILING

Bullet-shaped baffle ceiling makes the people who living in the space with feeling of longer distance and bigger space.



SUNSHADE LOUVER ▶



Sunshade louver includes aerofoil sun louver, aerobrise sun louver, celoscreen sun louver, box louver, perforated aluminum panel louver, stainless steel mesh or expanded aluminum mesh and other special designed sunshade louver to meet architect's purpose.

Architectural metal sunshade louver is elegant, strongly fixing to the existing structure of a building, various colors available.

A highly functional and architectural system that can bring special color and pattern on exciting design effect to a building facade.

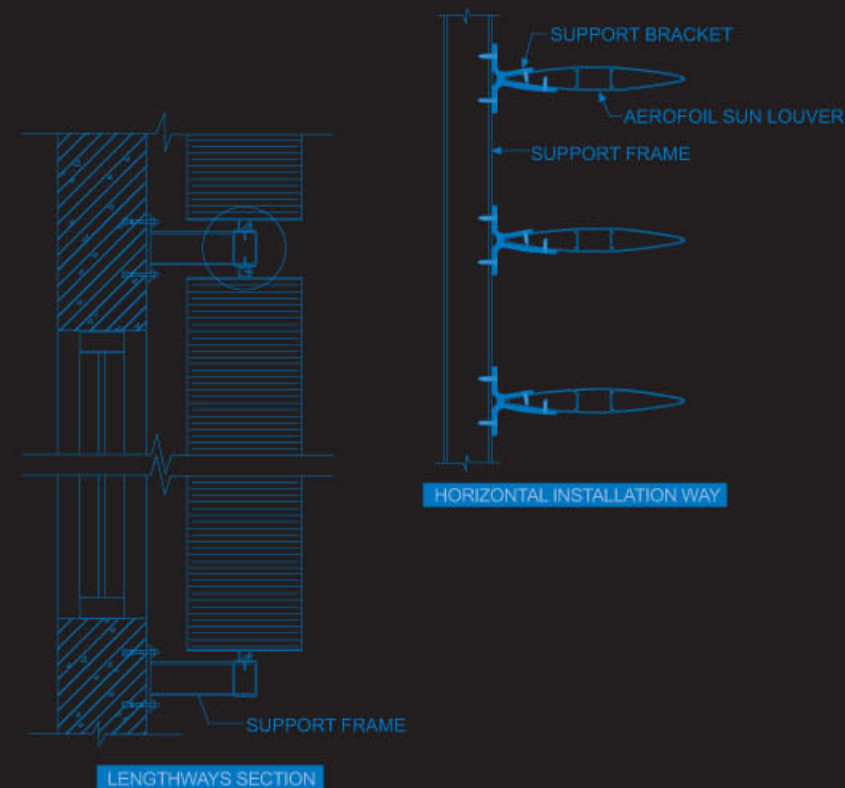
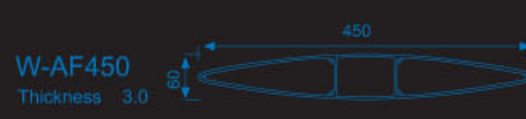


AEROFOIL

W-AF600/450/400/350

AEROFOIL

W-AF600/450/400/350

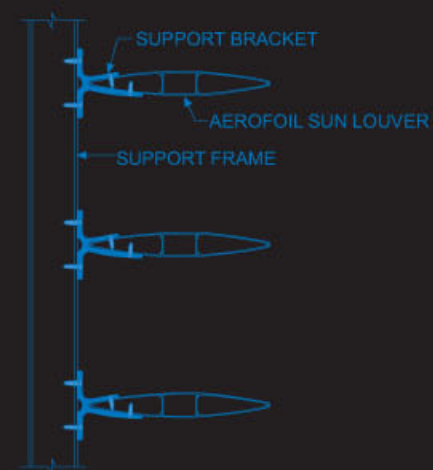
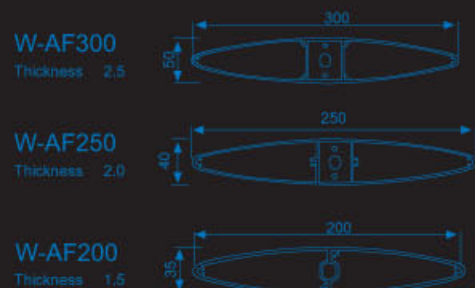


COMPOSITION:

AF600~AF350 is big size louver blades, it is normally used for large-scale glass curtain wall, windows and glass roof as awing, with grand building structure. AF600~AF350 is widely utilized at Government building, airport, hotel, supermarket, school, exhibition hall and commercial buildings.

AEROFOIL W-AF300/250/200

AF300~AF200 is medium size sun louver blades. The spacing between blades, carriers decrease accordingly compared with AF600~AF350.

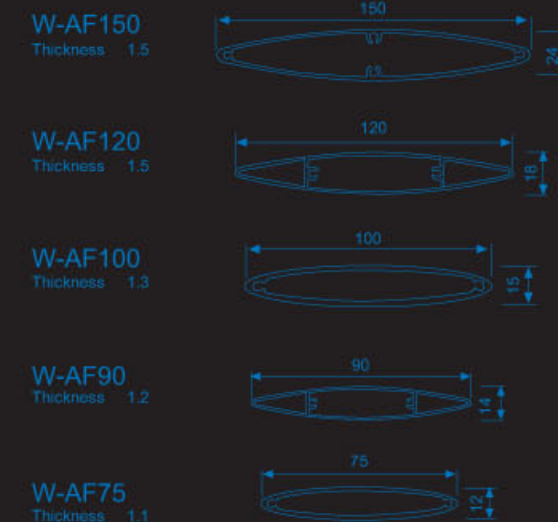


HORIZONTAL INSTALLATION WAY



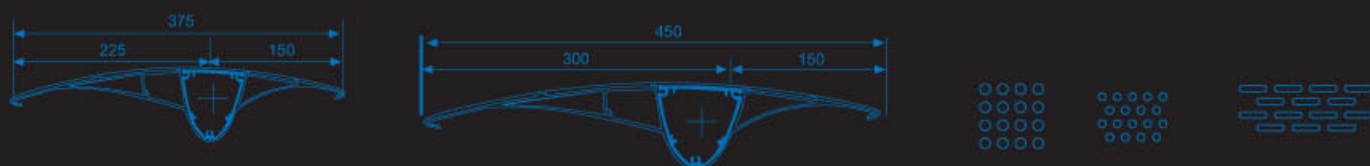
AEROFOIL W-AF150/120/100/90/75

AF150~AF60 Aerofoil sun louver blades is small size sun louver system. It's light and small space occupation, this louver blades usually installed into aluminum hollow section frame, operable or fixed installed system, usually used for door or window decoration and sun control.



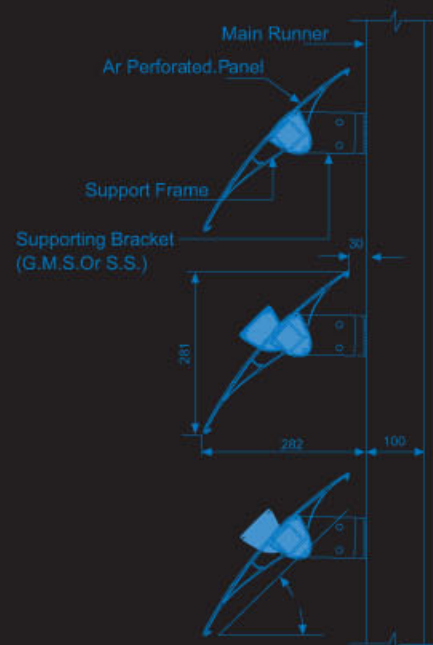
AEROWING W-AW375/AW450

Prolouer AR series Aeroscreen sun louver consist of aluminum extrusion with a wall thickness *1.8mm, and 0.8mm~1.2mm thickness perforated panel. The Aeroscreen sun louver blades can be installed either fixed or adjustable in horizontal or vertical configuration to meet architect's and designer's purpose.



Other size are available on requested

Perforation diagrammatic drawing

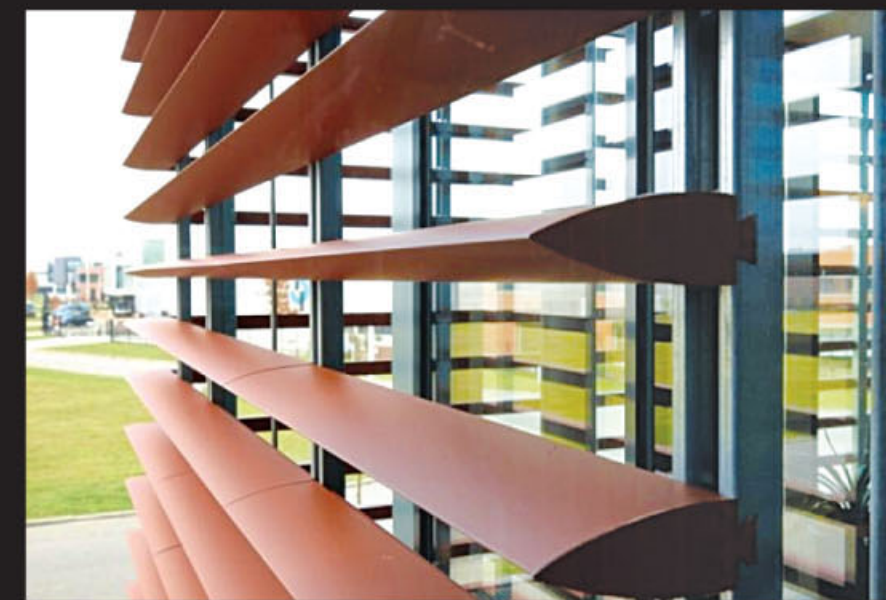
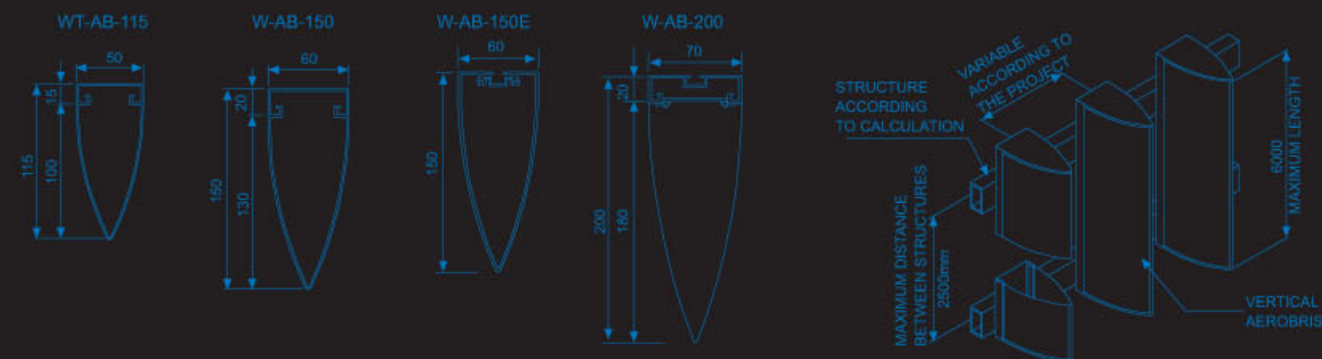


Lengthways section

AEROBRISE W-AB115/150/200

AEROBRISE SUN LOUVRE

Prolouer AB series Aerobrise sun louver is in half elliptical shape. It has two types: aluminum panel aerobrise louver blades and aluminum extrusion aerobrise sun louver blades.



AEROSCREEN W-AC85

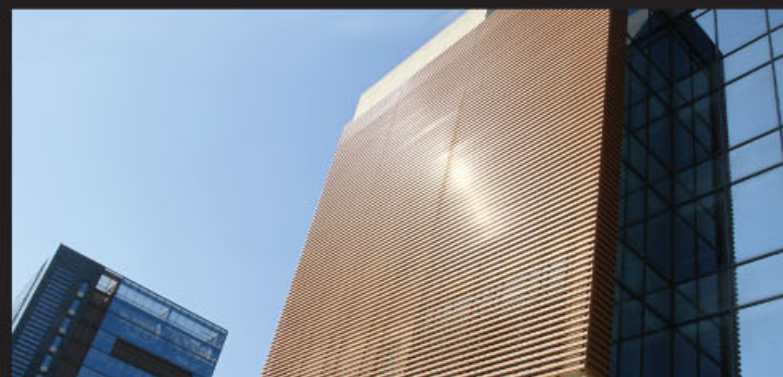
DESCRIPTION

- ◆ C shaped profile, roll formed louvers
- ◆ Light Weight clip in carrier system
- ◆ Durable with minimum maintenance required
- ◆ Application for both interior and external designs
- ◆ Polyester powder coating, PVDF coated, Various colors & woodgrain colors available for choice.
- ◆ 85R Louver blades can be plain or perforated for choice
- ◆ Vertical and horizontal installation are available, there are 5 different carriers for choice.



TECHNICAL

- ◆ **Aluminum alloy:** AA1100, AA3003
- ◆ **Panel size:** 84mm effective width*16mm deep
- ◆ **Panel thickness:** 0.5-0.8mm thick
- ◆ **Panel ends:** Panel ends holding must not exceed 300mm mullion
- ◆ **Panel joints:** Panel joints must be at minimum of 100mm over lapped



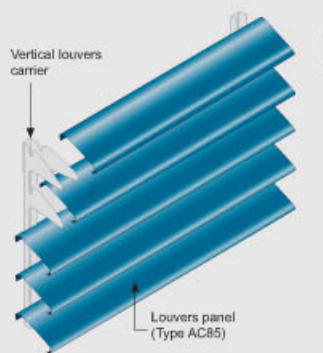
BOX LOUVRES W-BL SERIES

Box louvre is aluminum extrusion hollow, in box shape.

Any size of aluminum extrusion hollow can be made as box louvre. Popular size are 80X20, 100X20, 100X50, 120X15, 150X30, 200X50, etc. This is elegant appearance, simple fixed sun louvre.

W-AC85-25V

Typical Installation Plan For PRO-AC85-25V Vertical Sun Louvers

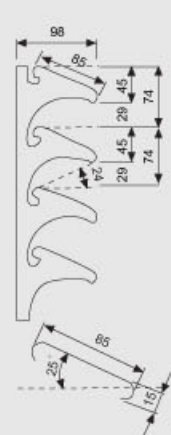


Isometric View: PRO-AC85-25V Vertical Sun Louvers

Carrier For PRO-AC85-25V



Typical Detail TYPE PRO-AC85-25V Vertical Carrier



W-AC85-90V

Typical Installation Plan For PRO-AC85-90V Vertical sun Louvers

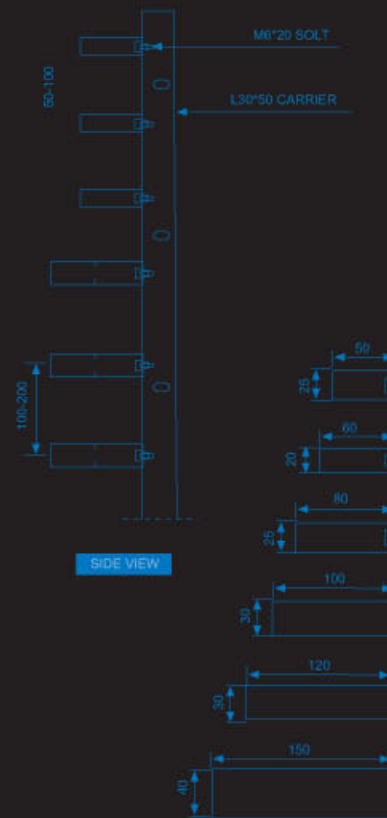
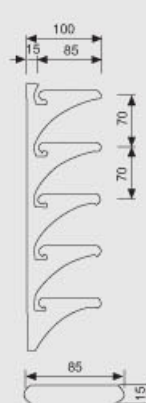


Isometric View: PRO-AC85-90V Vertical Sun Louvers

Carrier For PRO-AC85-90V

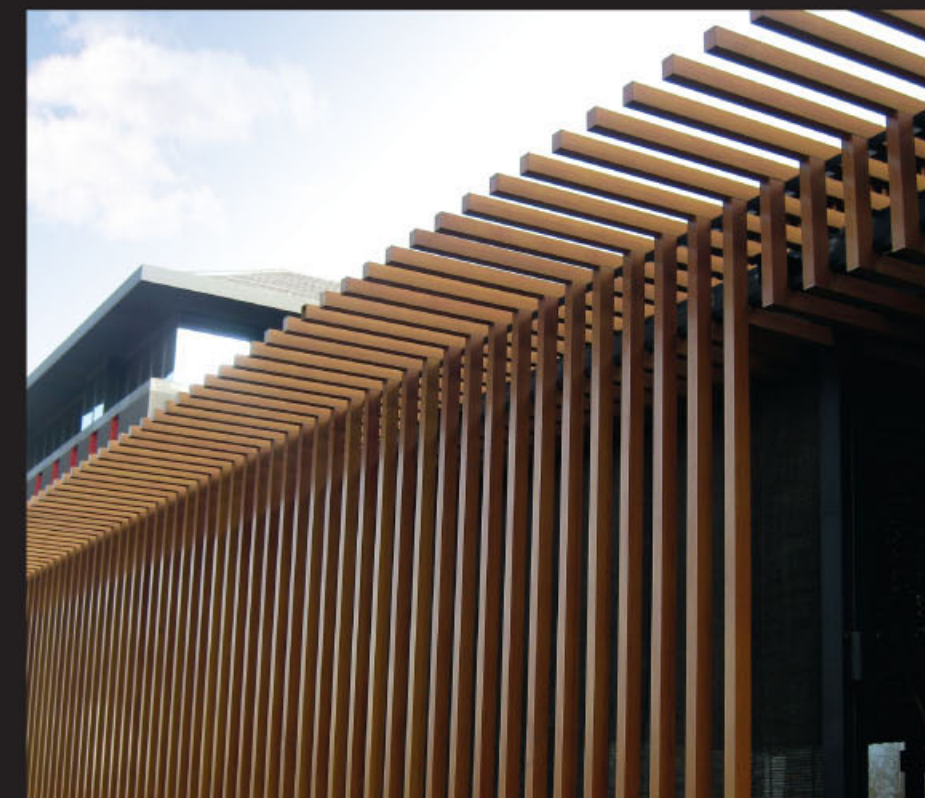


Typical Detail TYPE PRO-AC85-90V Vertical Carrier



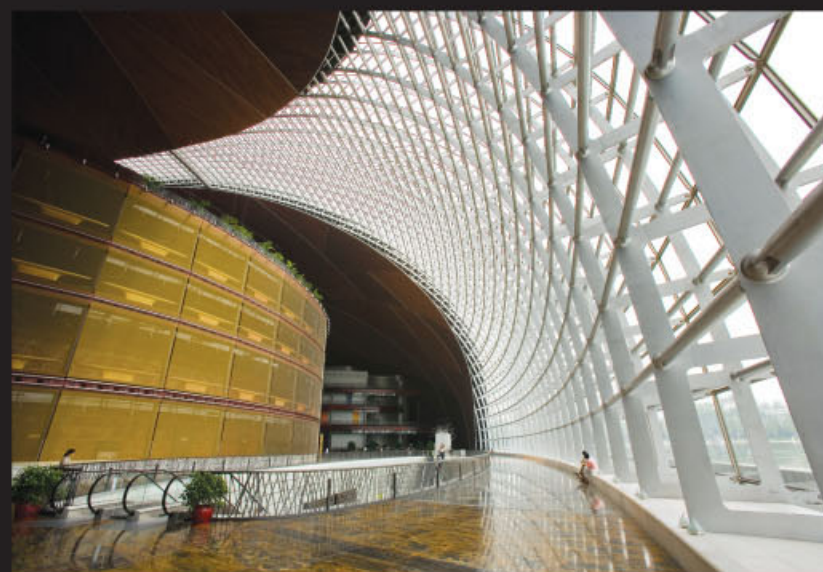
SIDE VIEW

BOX DETAILS

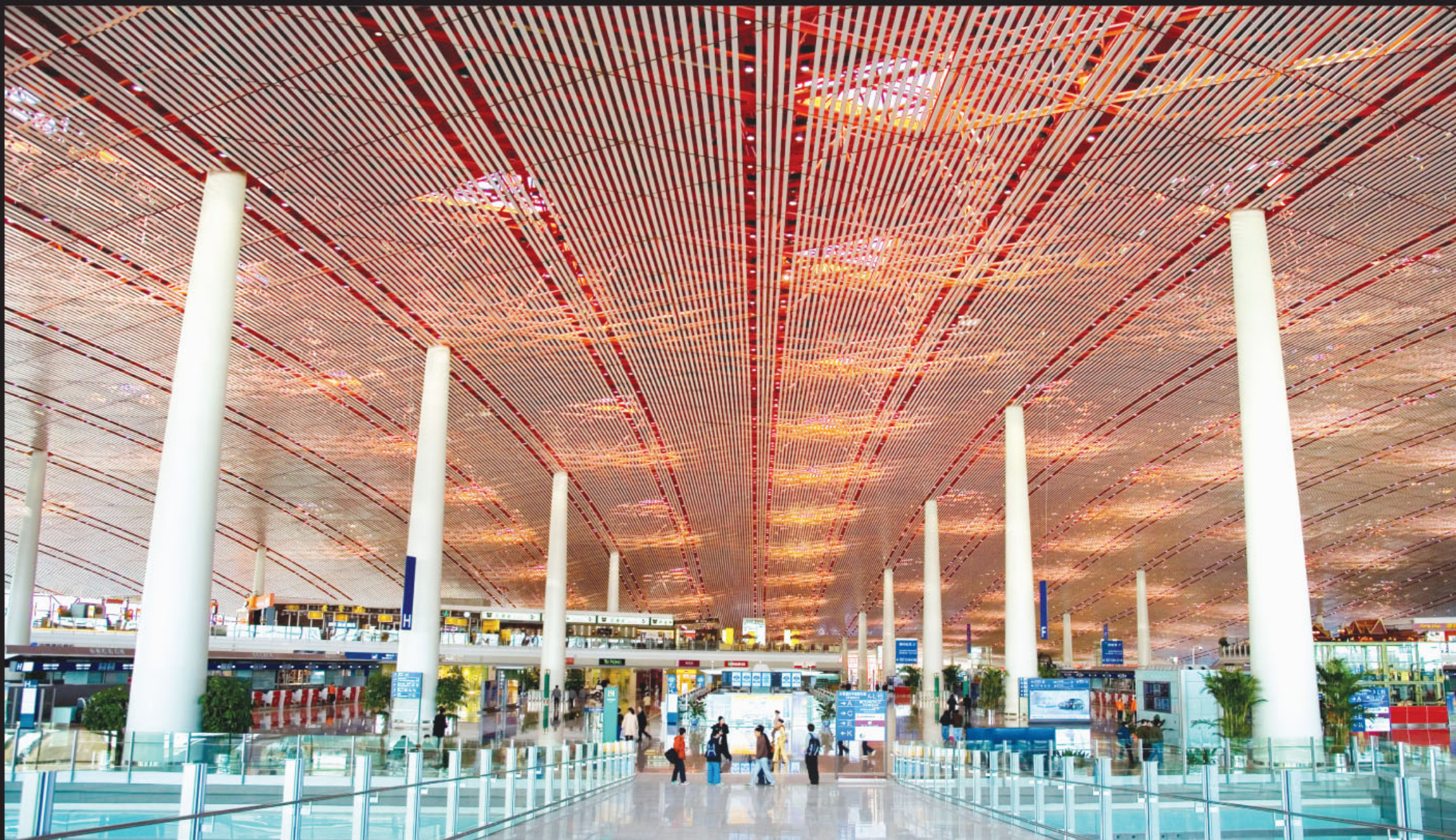


PROJECT GALLERY ▶

DOMESTIC PROJECTS



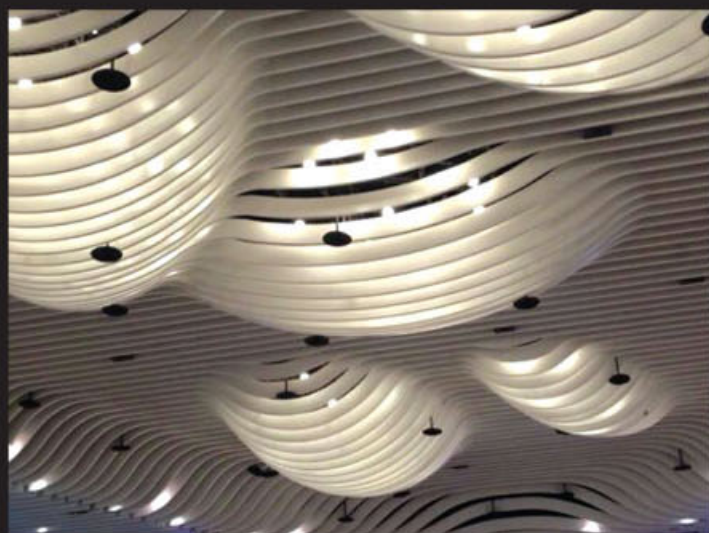
■ (China) National Theatre



■ (China) BeiJing International Airport



■ (China) GuangZhou ZhongTai Plaza



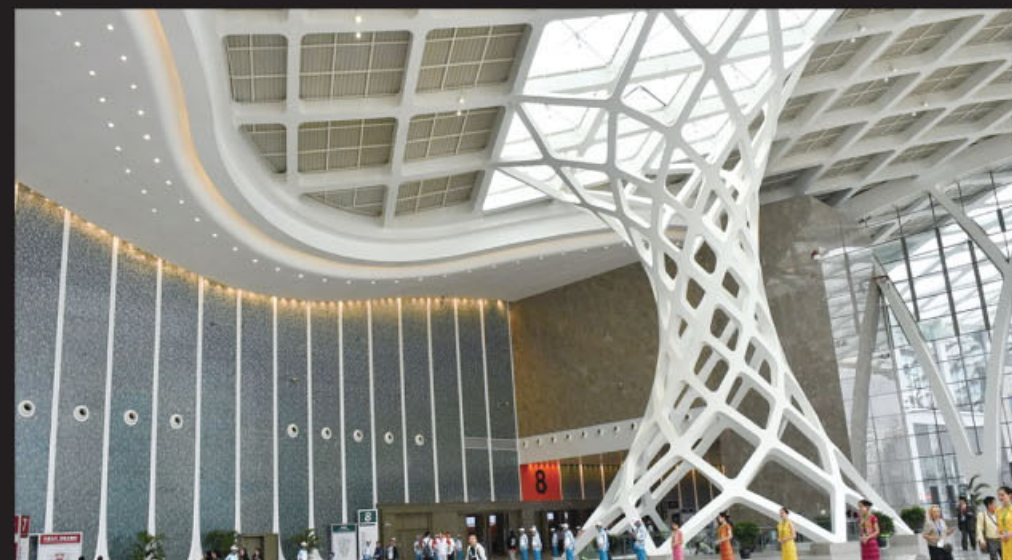
■ (China) GuangZhou ZhongTai Plaza



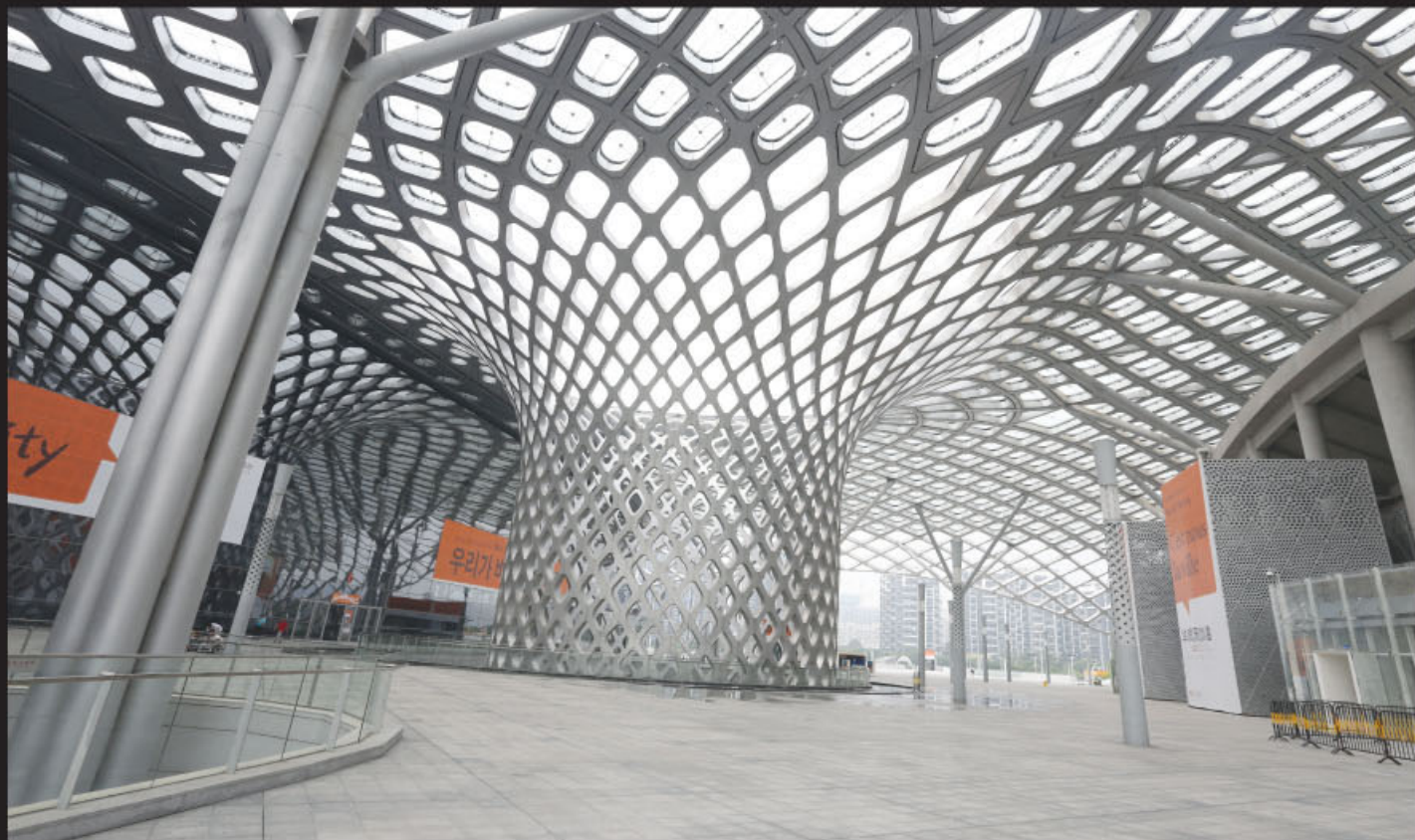
■ (China) Shanghai Science Museum



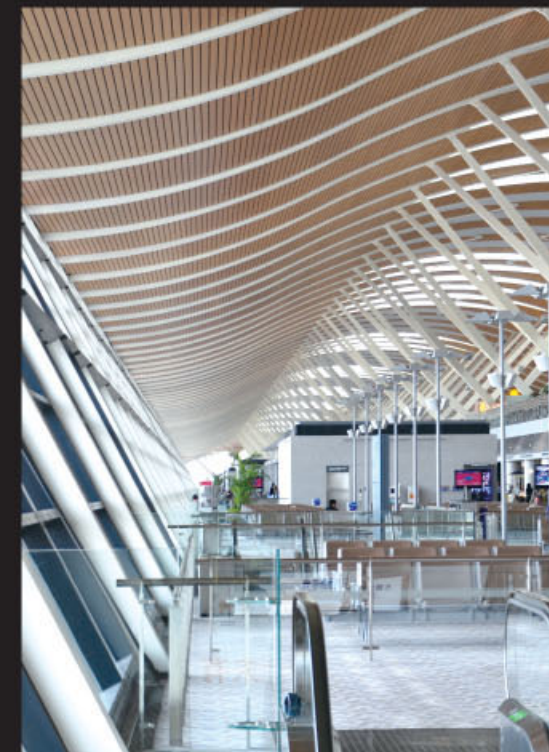
■ (China) KunMing International Airport



■ (China) Yunnan Convention Center



■ (China) ShenZhen Bay Stadium



■ (China) Shanghai Pudong Airport



■ (China) BeiJing International Restaurant



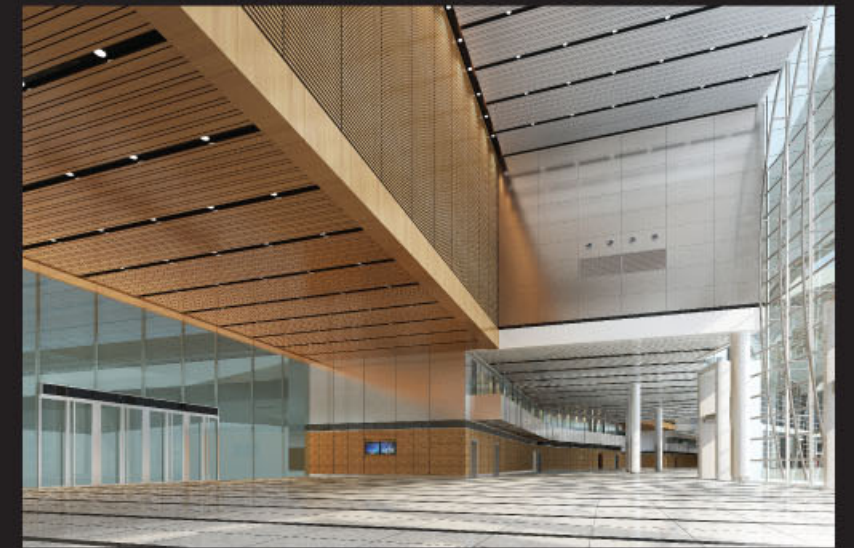
■ (China) Suzhou Science and Culture Center



■ (China) BeiJing SOHU Headquarter



■ (China) WuHan International Exhibition Center





■ (China) YunNan Tourist Service Center



■ (China) ShenZhen Bao'An Library



■ (China) GuangZhou South Railway Station

■ (China) GuangZhou South Railway Station





■ (China) Xi'An Ming Dynasty Heritage Park



■ (China) GuangZhou Four Season Hotel
International Financial Center

PROJECT GALLERY ▶

INTERNATIONAL PROJECTS



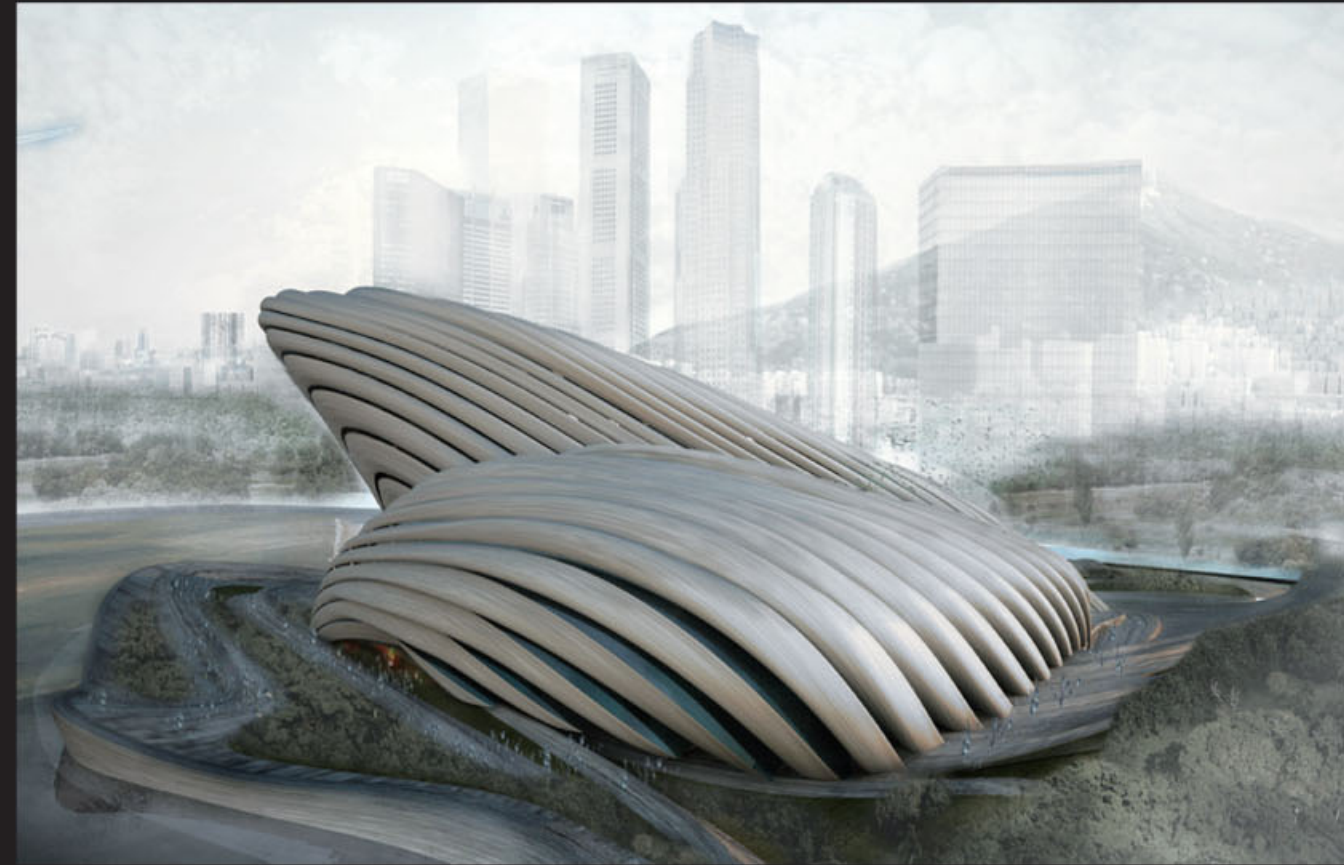
Hong Kong Hysan Place ■



■ Macau International Expo Center



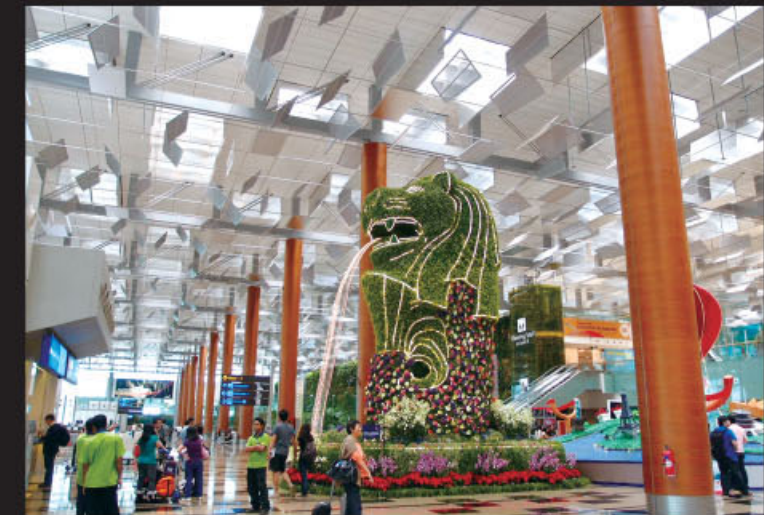
■ Uppsala Parking House, Sweden



■ Busan Opera, Korea



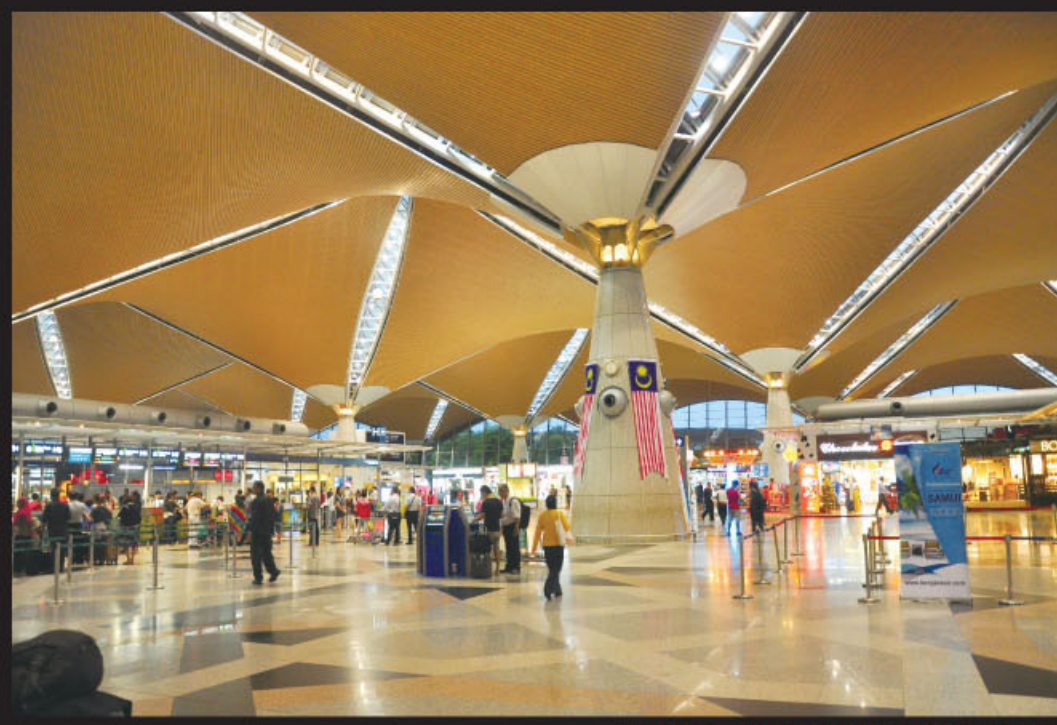
Macau Science Museum



Singapore Airport



KNG Shopping Center, Sweden



Kuala Lumpur International Airport