

OptiPro



OPENING
NEW
HORIZONS

+29
years of experience

+55.000
square meters

+2.500
partners



Optimedia has been producing PVC and Aluminum joineries since 1994, amassing an impressive and modern production system. Since 2006, we have started exporting our products currently having more than 2.500 B2B partners worldwide.

OUR VISION:

To be a leader in the production of PVC and Aluminum joineries, offering support to all our partners. To achieve this, we have kept to our core principles, maintaining the quality of our products and the relationships with our partners as top priorities.

OUR MISSION:

To produce windows and doors that have certified and proven characteristics, manufactured and delivered to the highest market standards.

SUPPLIERS



REYNAERS, is a european leader specialized in the development of innovative and sustainable aluminum solutions. Their product offering ranges from curtain walls to windows, doors and even sliding or folding joinery systems.

reynaers.com



CORTIZO has consolidated its leading position on the aluminum market for architecture and construction profiles through massive investments that have allowed it to create a complete range of solutions for windows, facades and state-of-the-art solar protection systems.

cortizo.com



GUARDIAN GLASS is one of the largest and most innovative glass manufacturers in the world. Founded in 1932 in Detroit, Michigan, the company operates on five continents, serving more than 160 countries.

guardianglass.com



SAINT-GOBAIN GLASS is the european leader in the production of construction glass. The factory in Călărași, Romania, has the most modern float glass production line in Europe. The thermal, acoustic and security performances of SAINT-GOBAIN glazings recommends them for the most creative and original architectural solutions.

saint-gobain-glass.com



In recent years, ALIPLAST has become one of the leading international players in the development and production of aluminum systems for windows, doors, verandas and curtain walls. Innovation, design, technical competence and quality are decisive in this development.

aliplast.com



WINKHAUS develops, manufactures and sells hardware for windows and doors, together with automatic closing, access and security systems. The german WINKHAUS group was founded in 1854, remaining a family business with over 2.000 partners worldwide.

winkhaus.com

OptiPro

COR 80 CE

PRODUCT GEOMETRY

Frame depth: **80 mm**
Sash depth: **88 mm**
3 sealing gaskets

MAXIMUM INSULATING GLASS UNIT THICKNESS

60 mm

THERMAL PERFORMANCE

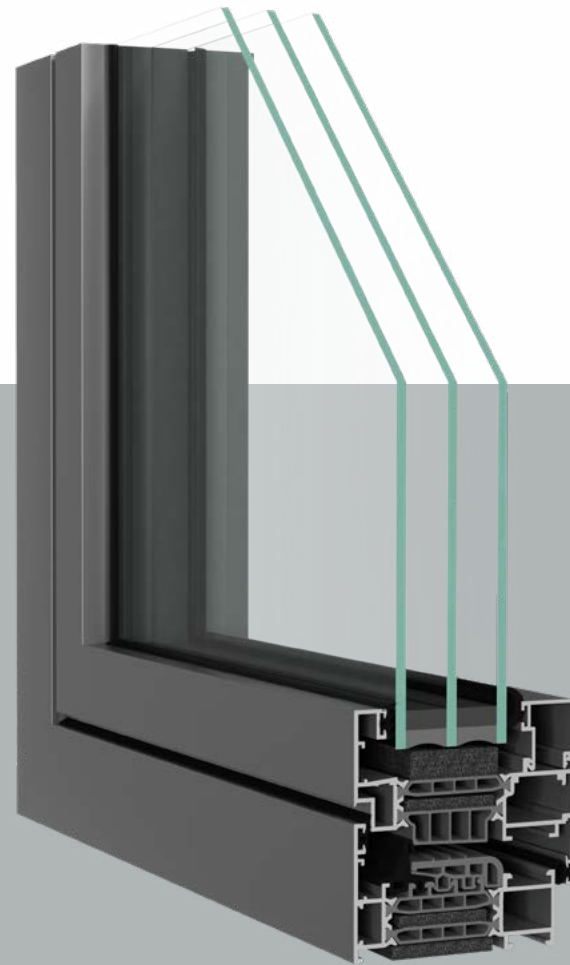
$U_w \geq 0,80 \text{ W/m}^2\text{K}$

ACOUSTIC INSULATION

46 dB

CERTIFICATIONS

Air resistance: **Class 4**
Water resistance: **Class E1950**
Wind resistance: **Class C5**



* THE PHOTOS ARE FOR INFORMATIONAL PURPOSES ONLY.

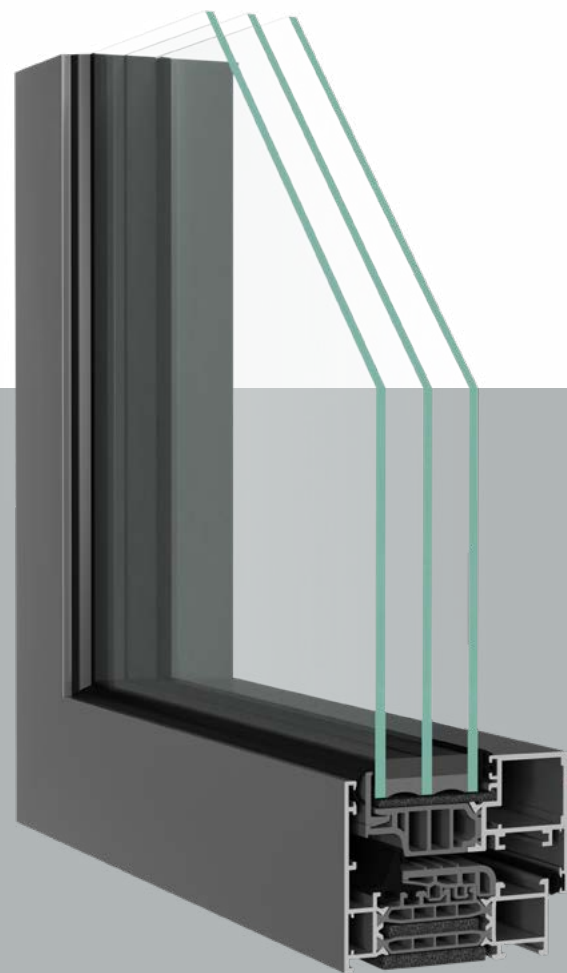


Cortizo 80 is an innovative system offering superior sealing, excellent energy efficiency and outstanding acoustic insulation. Adaptable to extreme conditions and with a reduced frame depth, it is perfectly suited for passive houses and provides maximum comfort. Its outstanding performance in AWS tests and easy assembly make it an ideal option for large-scale production. With a hidden hinge design option and highly secure hardware, it brings light and security to any space.



OptiPro

COR 80 HO (HIDDEN SASH)



PRODUCT GEOMETRY

Frame depth: **80 mm**
Sash depth: **80 mm**
3 sealing gaskets

MAXIMUM INSULATING GLASS UNIT THICKNESS

50 mm

THERMAL PERFORMANCE

$U_w \geq 0,80 \text{ W/m}^2\text{K}$

ACOUSTIC INSULATION

46 dB

CERTIFICATIONS

Air resistance: **Class 4**
Water resistance: **Class E1650**
Wind resistance: **Class C5**



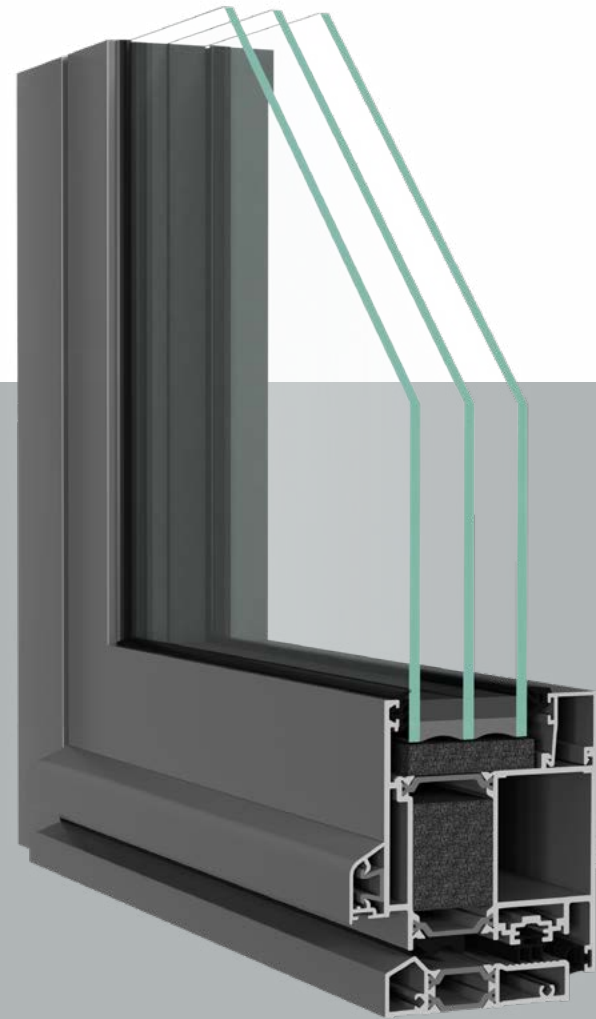
Cortizo 80 is an innovative system offering superior sealing, excellent energy efficiency and outstanding acoustic insulation. Adaptable to extreme conditions and with a reduced frame depth, it is perfectly suited for passive houses and provides maximum comfort. Its outstanding performance in AWS tests and easy assembly make it an ideal option for large-scale production. With a hidden hinge design option and highly secure hardware, it brings light and security to any space.

*THE PHOTOS ARE FOR INFORMATIONAL PURPOSES ONLY.



OptiPro

MILLENIUM PLUS 80



PRODUCT GEOMETRY

Frame depth: **80 mm**
Sash depth: **80 mm**
2 sealing gaskets

MAXIMUM INSULATING GLASS UNIT THICKNESS

64 mm

THERMAL PERFORMANCE

$U_w \geq 0,8 \text{ W/m}^2\text{K}$

ACOUSTIC INSULATION

40 dB

CERTIFICATIONS

Air resistance: **Class 4**
Water resistance: **Class 6A**
Wind resistance: **Class C4**



The new Millennium 80 door system with improved thermal insulation is ideal for commercial premises and buildings. With outstanding performances in thermal and acoustic insulation, it is suitable for various applications including emergency exits, whilst offers the possibility of a 100° sash opening. Furthermore, Millennium 80 doors can be fitted with an applied decorative panel to hide the profiles and improve their aesthetic appearance.

* THE PHOTOS ARE FOR INFORMATIONAL PURPOSES ONLY.



OptiPro

MASTERLINE 10

PRODUCT GEOMETRY

Frame depth: **97 mm**
Sash depth: **107 mm**
3 sealing gaskets

MAXIMUM INSULATING GLASS UNIT THICKNESS

88 mm

78 mm fixed window

THERMAL PERFORMANCE

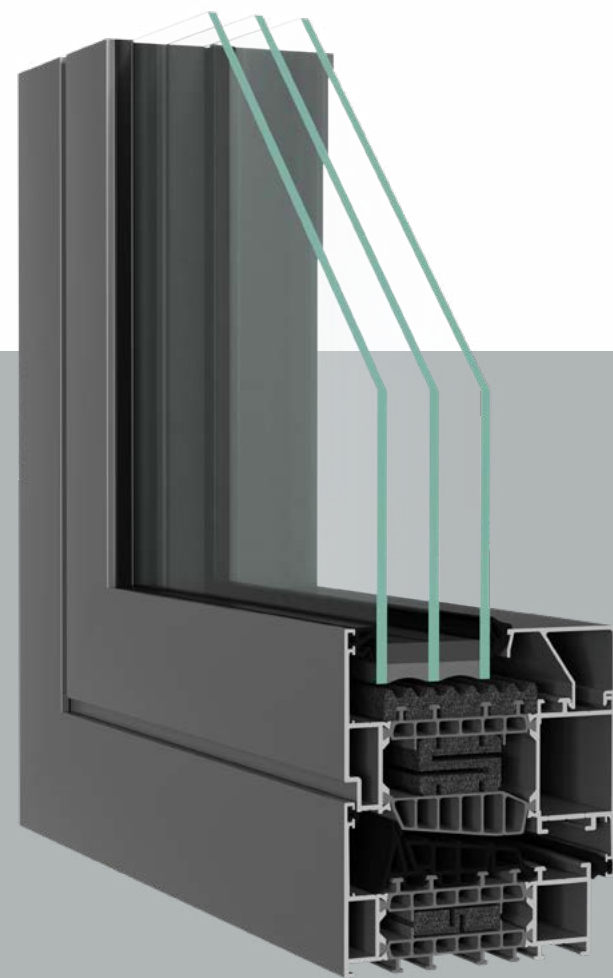
$U_w \geq 0,80 \text{ W/m}^2\text{K}$

ACOUSTIC INSULATION

50 dB

CERTIFICATIONS

Air resistance: **Class 4**
Water resistance: **Class E900**
Wind resistance: **Class C4**



* THE PHOTOS ARE FOR INFORMATIONAL PURPOSES ONLY.

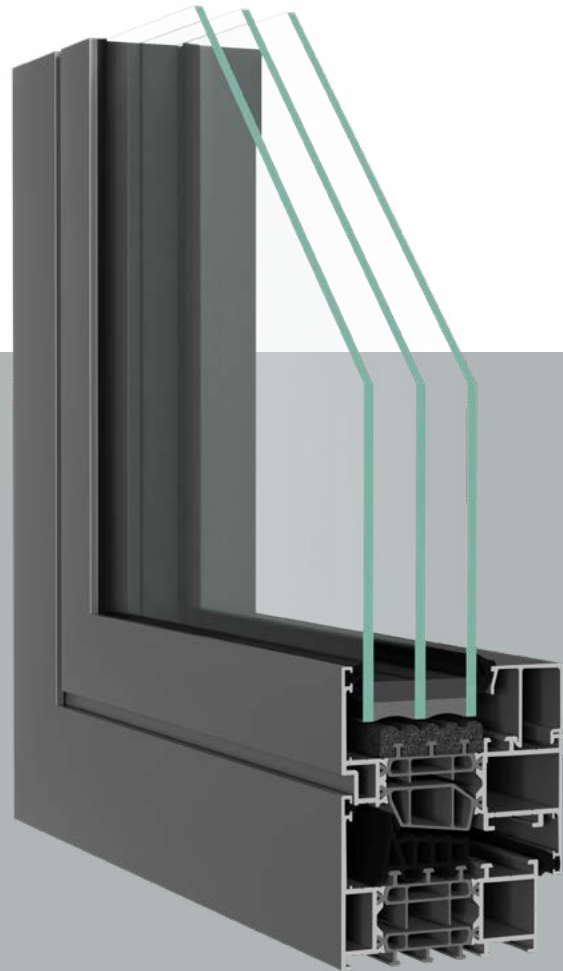


MasterLine 10 windows are adapted to architectural trends and spaces defined by functional design. The ideal choice for low-energy buildings, this certified passive house solution manages to offer an impeccable combination of abundant natural light together with exceptional performance and safety levels, without any compromises.



OptiPro

MASTERLINE 8



PRODUCT GEOMETRY

Frame depth: **77 mm**
Sash depth: **87 mm**
3 sealing gaskets

MAXIMUM INSULATING GLASS UNIT THICKNESS

72 mm
62 mm fixed window

THERMAL PERFORMANCE

$U_w \geq 0,88 \text{ W/m}^2\text{K}$

ACOUSTIC INSULATION

46 dB

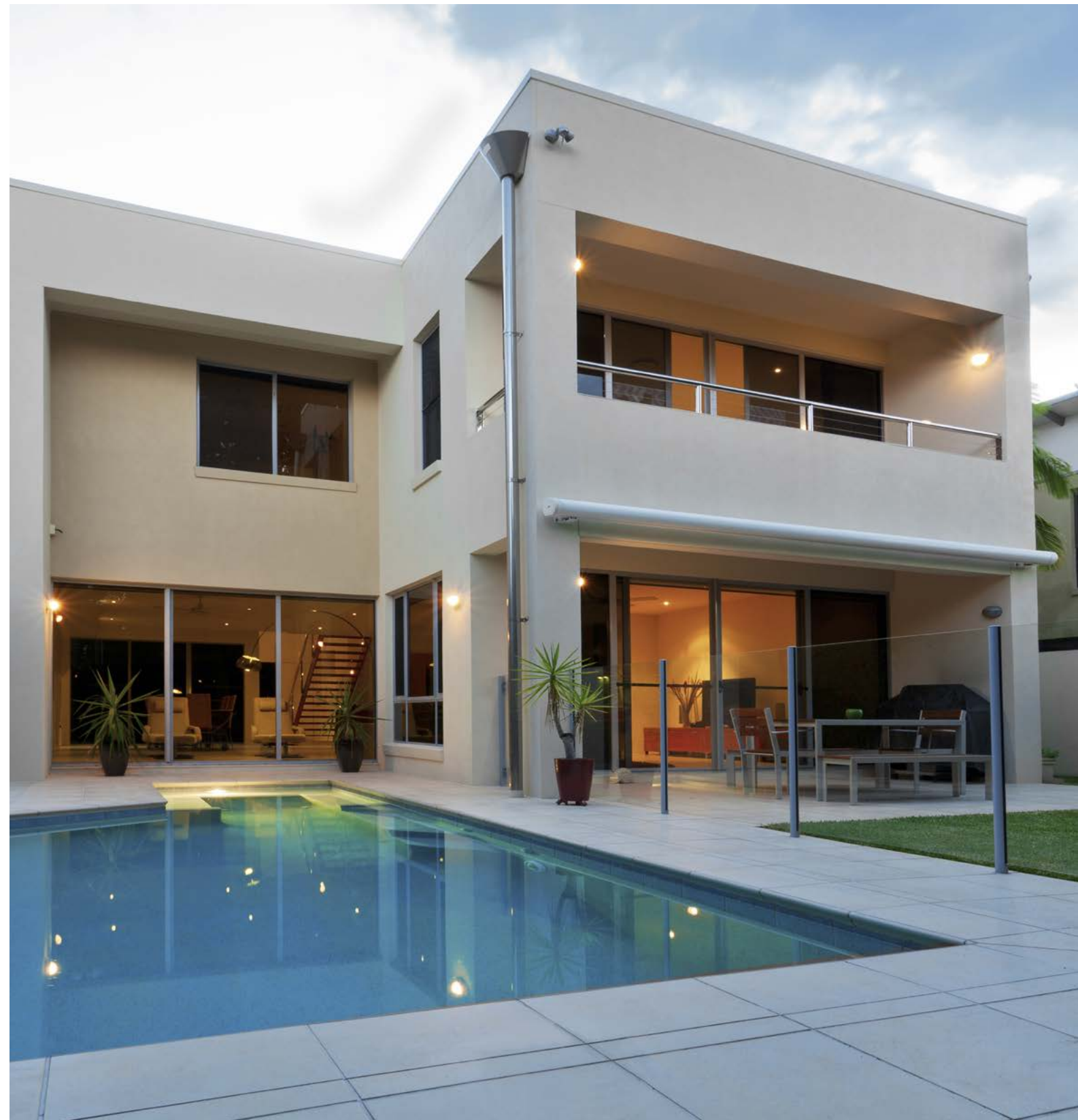
CERTIFICATIONS

Air resistance: **Class 4**
Water resistance: **Class E900**
Wind resistance: **Class C5**



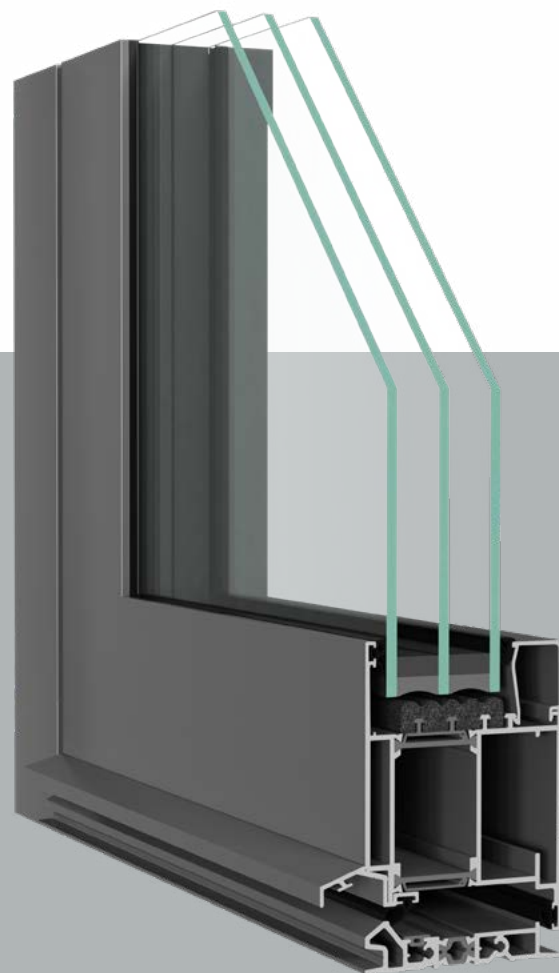
MasterLine 8 combines multiple design variants with the highest performance levels in its category into one premium window system. Together with its broad design spectrum, this new generation of aluminum windows is also available in three thermal insulation variants, precisely adapted to any project requirement.

* THE PHOTOS ARE FOR INFORMATIONAL PURPOSES ONLY.



OptiPro

MASTERLINE 8 DOOR



PRODUCT GEOMETRY

Frame depth: **77 mm**
Sash depth: **87 mm**
2 sealing gaskets

MAXIMUM INSULATING GLASS UNIT THICKNESS

60 mm

THERMAL PERFORMANCE

$U_w \geq 0,88 \text{ W/m}^2\text{K}$

ACOUSTIC INSULATION

46 dB

CERTIFICATIONS

Air resistance: **Class 4**
Water resistance: **Class E900**
Wind resistance: **Class C5**



MasterLine 8 combines multiple design variants with the highest performance levels in its category into one premium door system. Together with its broad design spectrum, this new generation of aluminum doors is also available in three thermal insulation variants, precisely adapted to any project requirement.

* THE PHOTOS ARE FOR INFORMATIONAL PURPOSES ONLY.



OptiPro

MASTERLINE 8 DOOR AUTOMATIC THRESHOLD

PRODUCT GEOMETRY

Frame depth: **77 mm**
Sash depth: **87 mm**

MAXIMUM INSULATING GLASS UNIT THICKNESS

60 mm

THERMAL PERFORMANCE

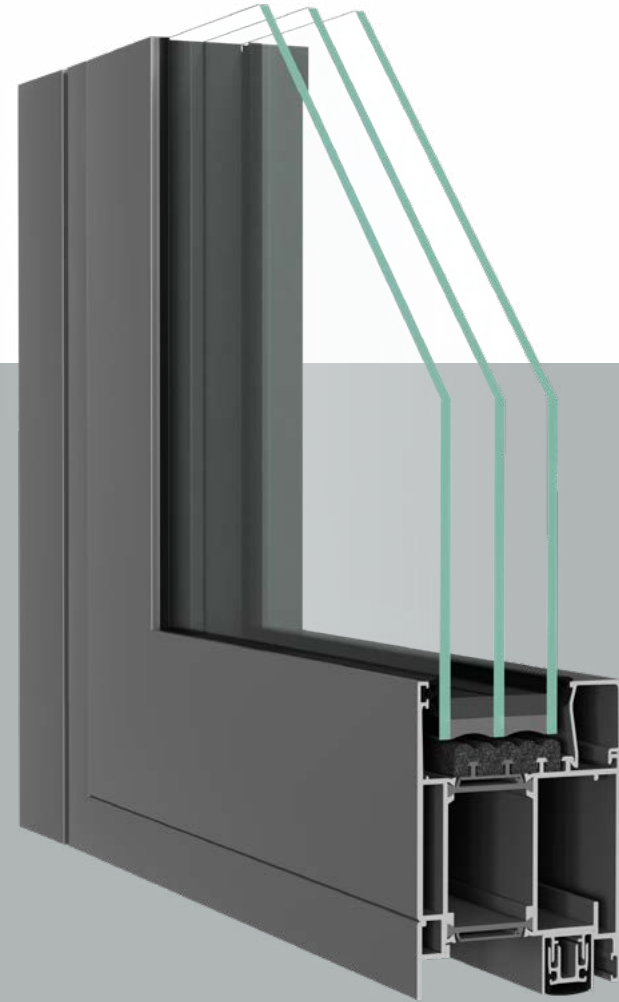
$U_w \geq 0,88 \text{ W/m}^2\text{K}$

ACOUSTIC INSULATION

46 dB

CERTIFICATIONS

Air resistance: **Class 4**
Water resistance: **Class E900**
Wind resistance: **Class C5**



* THE PHOTOS ARE FOR INFORMATIONAL PURPOSES ONLY.



MasterLine 8 combines multiple design variants with the highest performance levels in its category into one premium door system. Together with its broad design spectrum, this new generation of aluminum doors is also available in three thermal insulation variants, precisely adapted to any project requirement.



©Oranje Trading

OptiPro

GENESIS 75

PRODUCT GEOMETRY

Frame depth: **75 mm**
Sash depth: **84 mm**
3 sealing gaskets

MAXIMUM INSULATING GLASS UNIT THICKNESS

60 mm

THERMAL PERFORMANCE

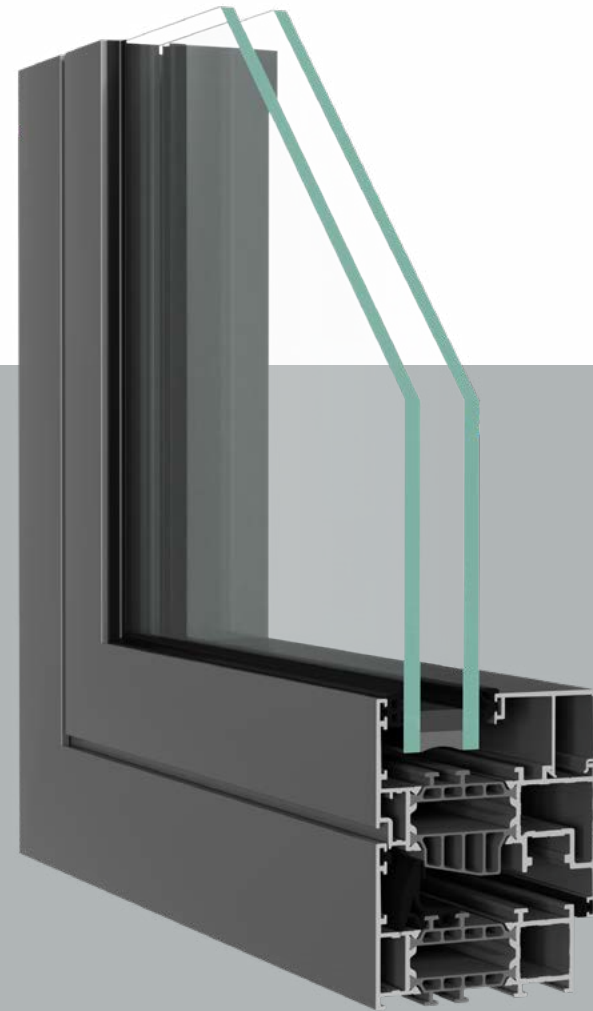
$U_w \geq 1,35 \text{ W/m}^2\text{K}$

ACOUSTIC INSULATION

45 dB

CERTIFICATIONS

Air resistance: **Class 4**
Water resistance: **Class E1200**
Wind resistance: **Class C5**



*THE PHOTOS ARE FOR INFORMATIONAL PURPOSES ONLY.

aliplast
aluminium systems

Genesis 75 sets a new standard in window thermal efficiency. This innovative aluminum system offers excellent thermal insulation and a modern appearance, making it ideal for both public access and residential buildings. With multiple designs and alternative profiles, it allows the creation of functional, aesthetic and high-quality windows and doors.



OptiPro

GENESIS 75 SU
(HIDDEN SASH)

PRODUCT GEOMETRY

Frame depth: **75 mm**
Sash depth: **79.5 mm**
3 gsealing gaskets

MAXIMUM INSULATING GLASS UNIT THICKNESS

59 mm

THERMAL PERFORMANCE

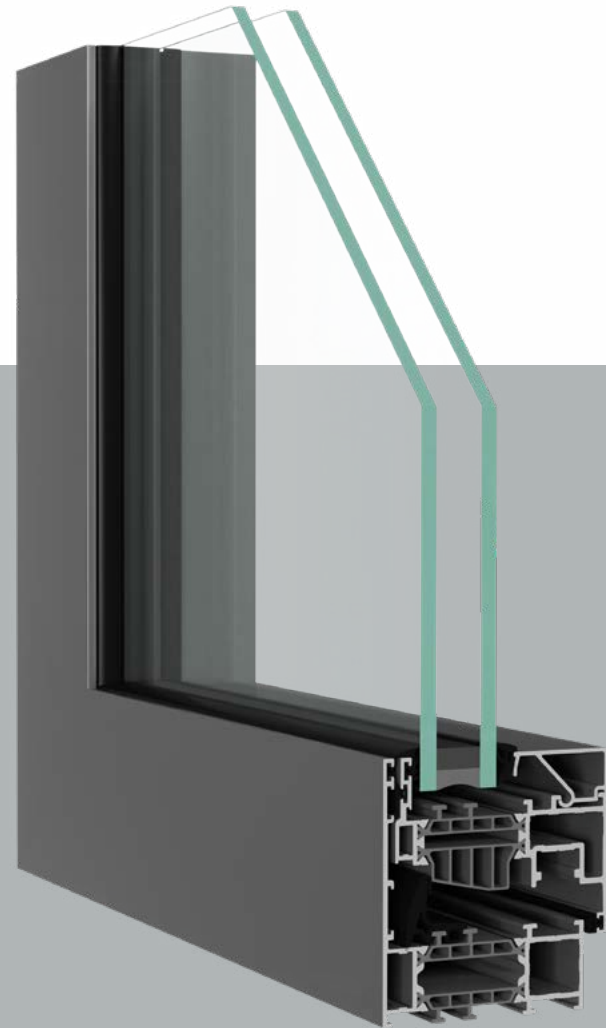
$U_w \geq 1,47 \text{ W/m}^2\text{K}$

ACOUSTIC INSULATION

40 dB

CERTIFICATIONS

Air resistance: **Class 4**
Water resistance: **Class E1950**
Wind resistance: **Class C5/B5**



* THE PHOTOS ARE FOR INFORMATIONAL PURPOSES ONLY.

aliplast
aluminium systems

Genesis 75 sets a new standard in window thermal efficiency. This innovative aluminum system offers excellent thermal insulation and a modern appearance, making it ideal for both public access and residential buildings. With multiple designs and alternative profiles, it allows the creation of functional, aesthetic and high-quality windows and doors.



OptiPro

HI-FINITY

PRODUCT GEOMETRY

Frame depth: **148 mm**
Sash depth: **44 mm**

MAXIMUM INSULATING GLASS UNIT THICKNESS

54 mm

THERMAL PERFORMANCE

$U_w \geq 0,87 \text{ W/m}^2\text{K}$

ACOUSTIC INSULATION

46 dB

CERTIFICATIONS

Air resistance: **Class 4**
Water resistance: **Class 9A**
Wind resistance: **Class C5**



*THE PHOTOS ARE FOR INFORMATIONAL PURPOSES ONLY.



The slim and refined design of the profiles within the Hi-Finity solution offers a seemingly endless panorama of glass, creating a minimalist and modern look with impressive technical performances. Hi-Finity is not only an aesthetic choice, but also an energy-efficient solution suitable for any contemporary low-energy building. Among its main advantages is the freedom it offers in the design of spaces, but also the possibility of an almost complete profile integration into other construction elements.



Glass



Glass represents approximately 80% of the a joinery's surface. OPTIMEDIA equips its products with SAINT GOBAIN GLASS or GUARDIAN glazings that meet the thermal, acoustic and security requirements, whilst ensuring the desired indoor ambiance. Their winter-summer comfort function maintains a pleasant interior atmosphere throughout the year, with the sheen of its coating giving the space a touch of elegance.

TECHNICAL SPECIFICATIONS

ESG tempered glass is, on average, 4 times more resistant than a standard glass to changes in temperature, strong winds and impacts. When cracked, it breaks down into small pieces without any sharp edges.

Laminated glass is composed of two or more simple glass sheets glued together with a PVB film which, in case of breakage acts as a medium to which the shards remain glued, therefore preventing possible accidents.

Tempered glass aims to protect both users against accidents and buildings against break-ins.

For design purposes or to protect you from prying eyes, Optimedia offers you a wide range of decorative glass with a large number of models, textures and colors.

Also, for added style and elegance, you can choose between georgian and astragal bars. These can be of different sizes, colors and shapes, made of PVC or Aluminum.

Tempered glass: Optimedia ESG

ESG is a type of glass that, following the tempering process, shows a considerably higher resistance to mechanical and thermal stresses compared to ordinary glass (including laminated glass). In case of breakage, ESG glass fragments into small pieces with blunt edges. Its superior mechanical properties recommend it for large glazed elements.

USES:

Architectural: all types of interior or exterior windows, doors and glass assemblies, consisting of independent or linked elements, facades, glazed roofs, stairs and even glass floors;

Urban furniture: telephone booths, public transport stations, parapets;

Interior furniture: table tops, shower cabins, shelves, furniture.

WHY ESG (TEMPERED) GLASS?



ESG glass is 50% lighter than laminated glass, thus facilitating its transport and assembly whilst at the same time extending the joinery's life by reducing the load on the hardware.



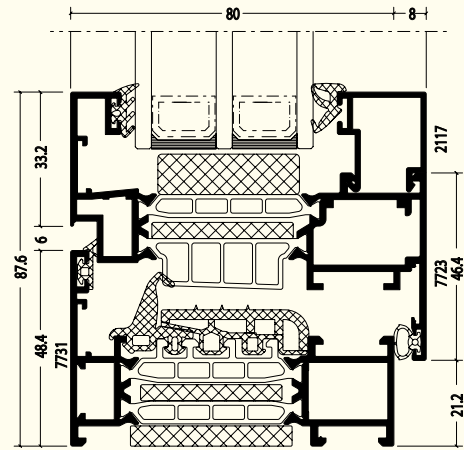
It is 5 times more resistant to tension, shocks and bending stresses compared to an ordinary or laminated glass of the same thickness.



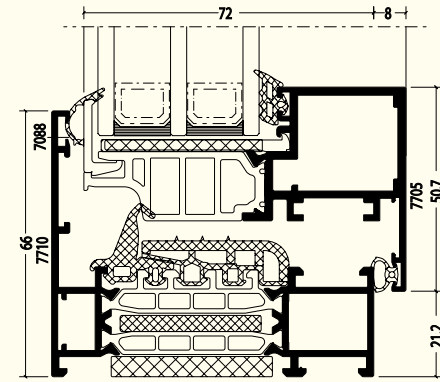
It reduces the risk of injury in case of breakage, by fragmenting into small, blunt pieces and limits the risk of break-ins.



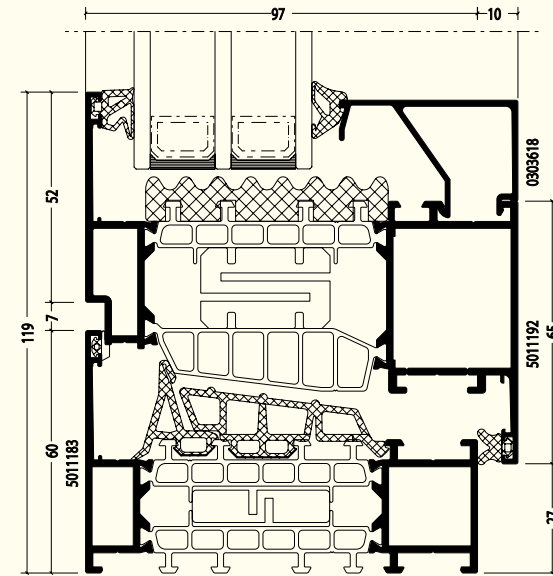
OptiPro COR 80 CE



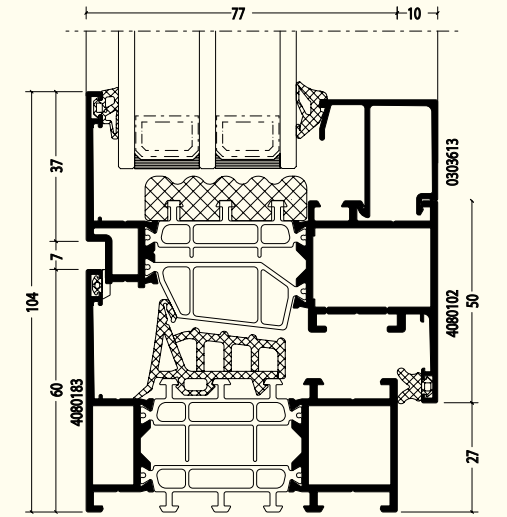
OptiPro COR 80 HO (HIDDEN SASH)



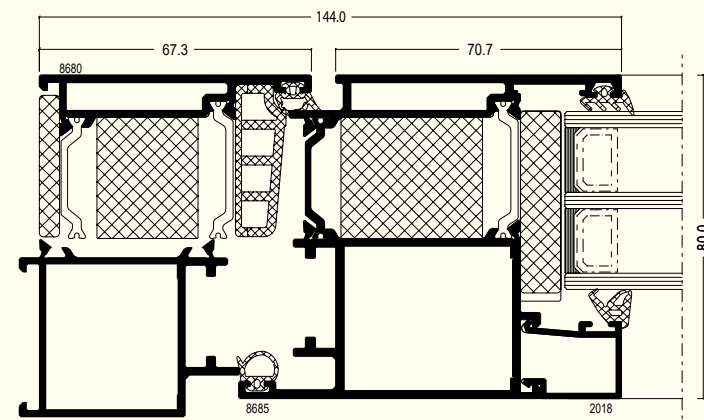
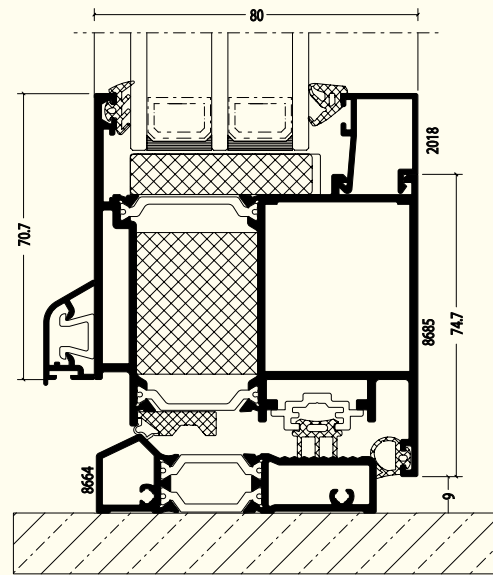
OptiPro MASTERLINE 10



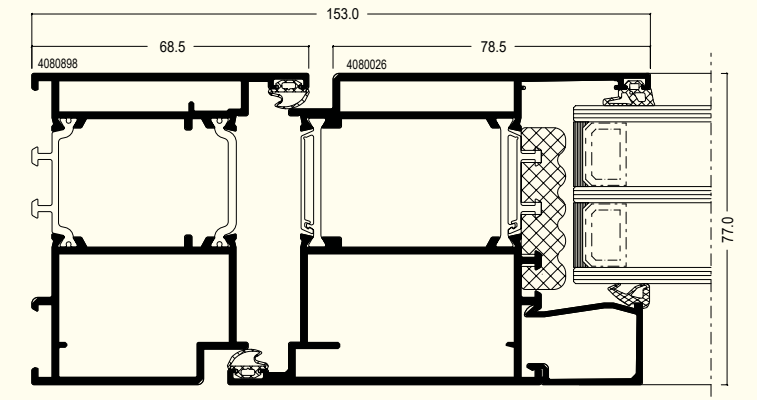
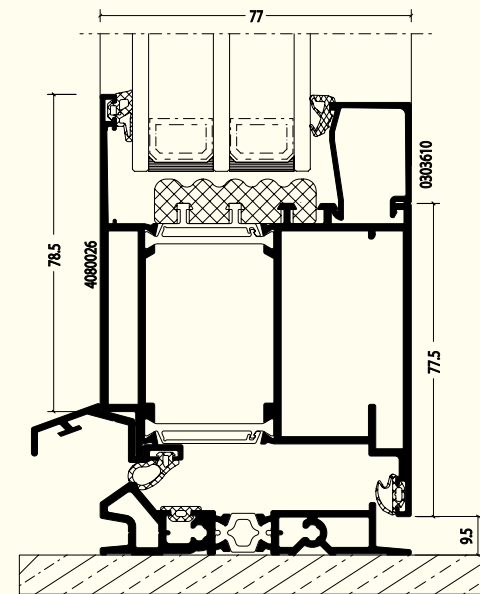
OptiPro MASTERLINE 8



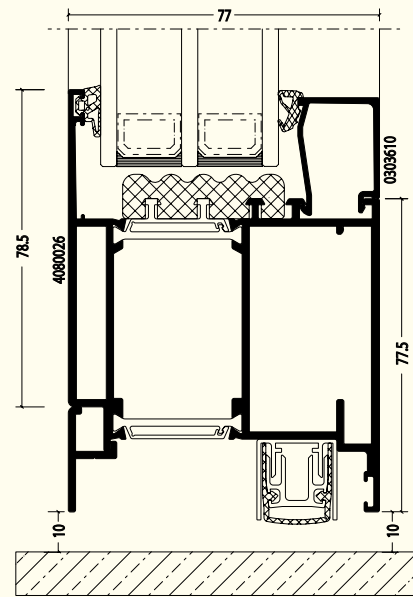
OptiPro MILLENIUM PLUS 80



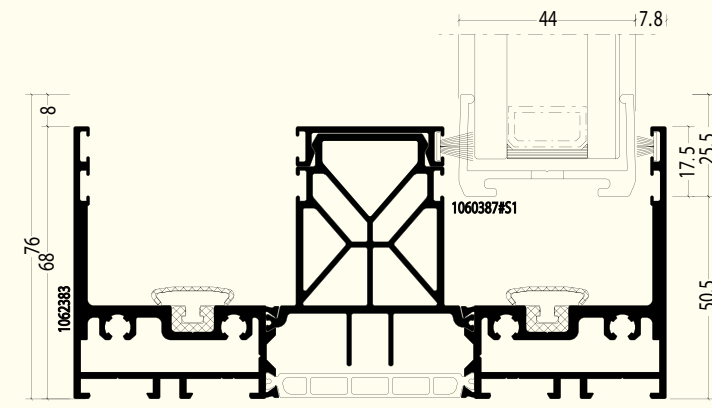
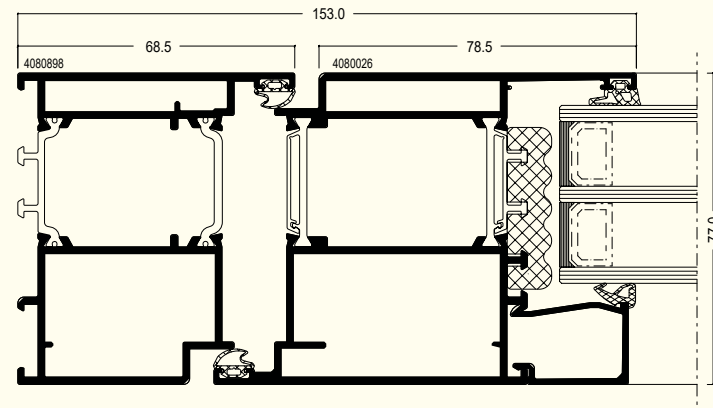
OptiPro MASTERLINE 8 DOOR



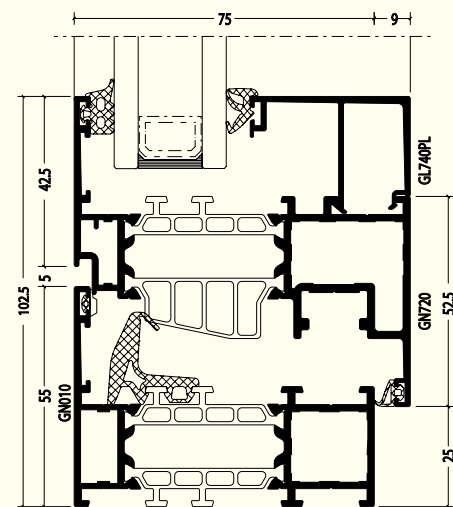
OptiPro MASTERLINE 8 DOOR AUTOMATIC THRESHOLD



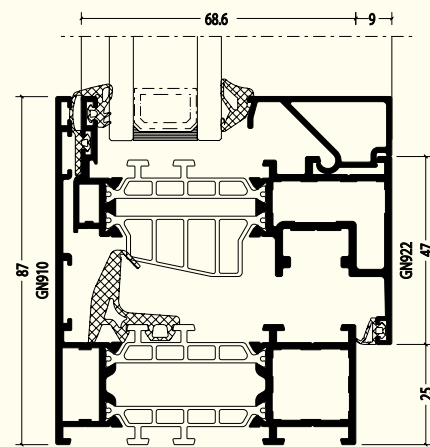
OptiPro HI-FINITY



OptiPro GENESIS 75

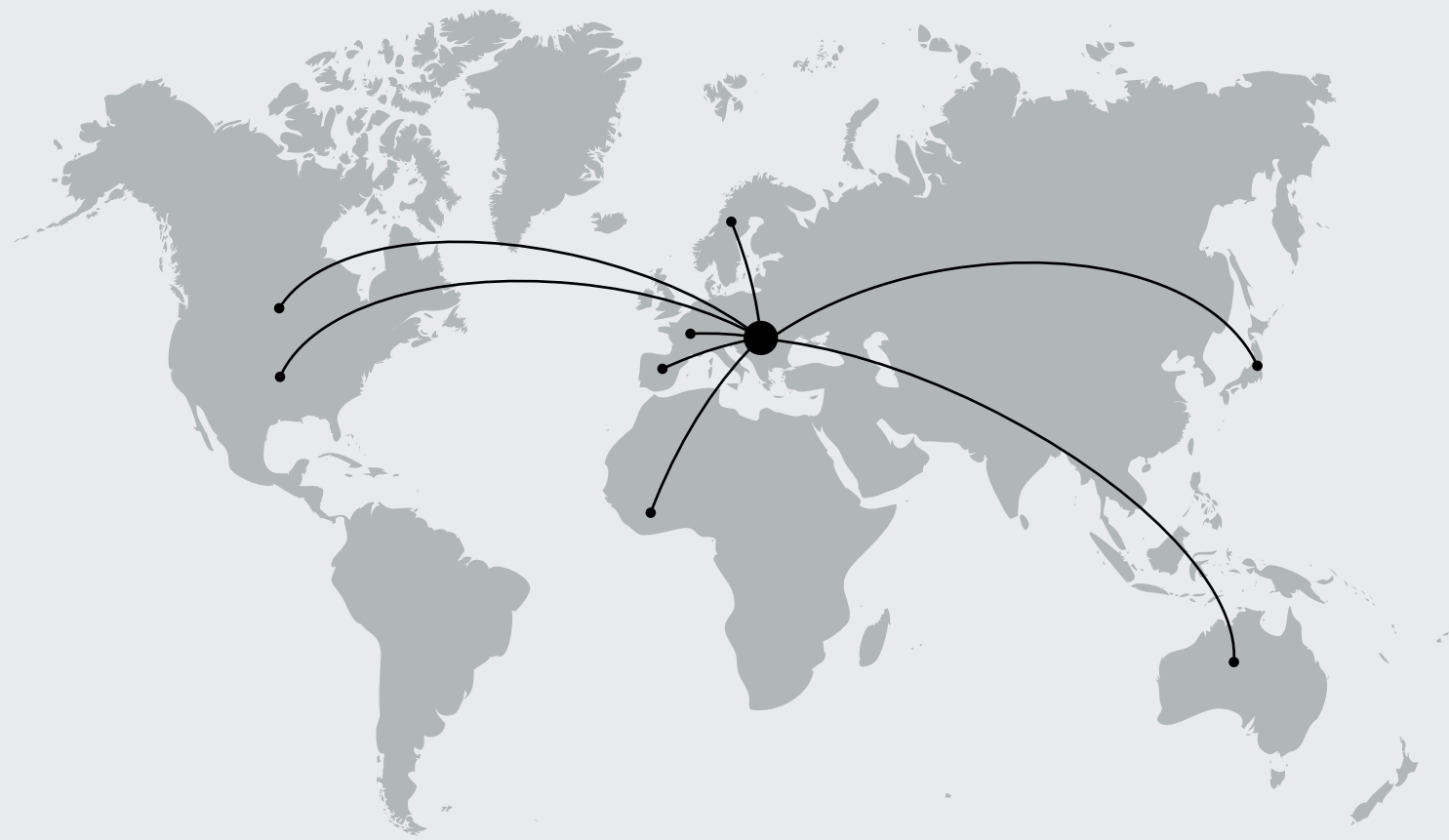


OptiPro GENESIS 75 SU (HIDDEN SASH)



Join the Optimedia team

We are constantly recruiting agents to represent Optimedia. We export to all continents and offer extensive sales support and packages so you can be an exceptional dealer in your area.



Contact

 [optimedia](#)

 [Optimedia SRL](#)

 [optimedia.eu](#)

 [optimedia.eu](#)





S.C. OPTIMEDIA S.R.L.
Calea Sântandrei, nr. 38
410238, Oradea, România
+40 259 442 821
worldwide@optimedia.eu

optimedia.eu