

**TRUFAST**<sup>®</sup>  
WALLS



**PRODUCT CATALOG**  
GLOBAL STRENGTH. PERSONAL SERVICE.



**ALTENLOH, BRINCK & CO. U.S., INC.**

# WHO WE ARE



## BUILDING ENVELOPE FASTENING SOLUTIONS



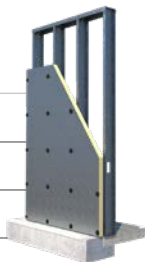
TRUFAST® has partnered with leading foam insulation, building wrap, and air/moisture barrier manufacturers and has developed fasteners and tools to rapidly install their material.

Check out our demonstration videos that showcase our various fasteners and tools. Please contact us for project assistance and to locate a distributor nearest you. We are proud to be “Made in America” and we thank you for your support.

# TABLE OF CONTENTS

## CONTINUOUS RIGID INSULATION (ci)

Thermal-Grip® ci prong washer + Grip-Deck® screws	5
Grip-Deck TubeSeal™	6
Thermal-Grip® Insulation Fastening System	7,33
Plasti-Grip® ci prong washer	8
Plasti-Grip® PMF (Plastic Masonry Fastener)	9



## MINERAL WOOL

Grip-Lok® hurricane washer	11
Grip-Deck TubeSeal™	12
Plasti-Grip® PMF (Plastic Masonry Fastener)	13
Thermal-Grip® Impaling Fastener	14
Thermal-Grip® Insulation Fastening System	15,33



## MASONRY VENEER ANCHORS

Thermal-Grip® MVA (Masonry Veneer Anchor)	17, 18, 19
Thermal-Grip® brick tie washer	17, 18, 19



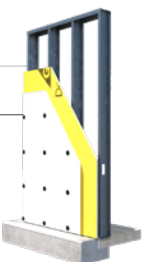
## GYPSUM SHEATHING

Grip-Plate® gypsum washer	21
---------------------------	----



## BUILDING WRAP

Thermal-Grip® flat washer	23
Plasti-Grip® CBW washer	23



## LATH / STUCCO

Grip-Plate® lath & plaster washer	25
Grip-Plate® tab washer	26
Grip-Deck TubeSeal™ with lath & plaster washer	27



## TILT WALL / MASONRY / FOUNDATION INSULATION

Plasti-Grip® PMF (Plastic Masonry Fastener)	29
Thermal-Grip® Insulation Fastening System	30,31
Victory Bear Insulation Track System	32,33



## EIFS

Plasti-Grip® PBLP2 prong washer	35
Plasti-Grip® PMF (Plastic Masonry Fastener)	36
Plasti-Grip® ci prong washer	37
Plasti-Grip® CBW washer	37



## SIP SCREWS

SIP LD screw (for light gauge steel and CMU)	38
SIP HD screw (for heavy gauge steel)	39
SIP TP screw (for wood)	39



## SCREWS

Grip-Deck® self-drilling bulk or collated screws	41
Grip-Deck® hilo thread bulk or collated screws	42
Grip-Lok® Autofeed Fastening System	43

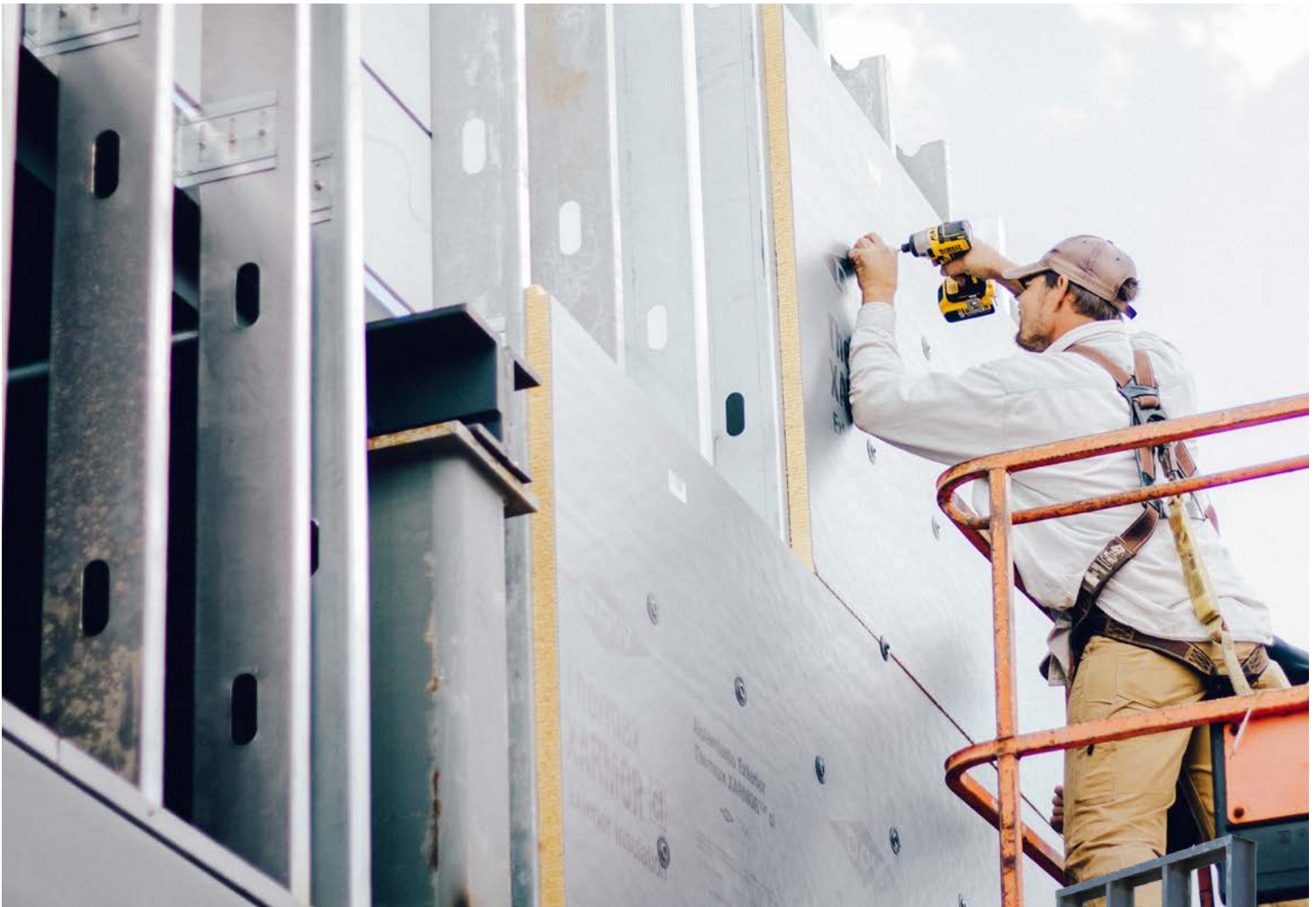


## COMPANY INFORMATION

Our Fastener Family	44,45
Warranty information, Return Policy	46
Contact Us	47

# CONTINUOUS RIGID INSULATION

Fasteners for Continuous Rigid Insulation



## Recommended, tested, specified.

The only fasteners recommended, tested, or specified by every major manufacturer including DuPont, Owens Corning, R-Max, Hunter, IKO, Carlisle, Atlas, Firestone, Kingspan, and BASF.



# Thermal-Grip® ci Prong Washer

## FEATURES

- Pre-spotting prongs for on-the-wall screw assembly
- 2" dia. solid cap design for air-barrier performance
- Flexible perimeter flattens without tearing insulation facer
- Attaches all types of rigid insulation and mineral wool
- Made in USA



## AIR-BARRIER PERFORMANCE

The Thermal-Grip® ci Prong Washer is perfect for use when the insulation is being installed as the air/weather barrier. The solid cap design of the washer and its flexible perimeter help seal the penetration of the screw.

## LABOR-SAVING PRONGS

Dual prongs enable pre-spotting for on-the-wall screw assembly. For even greater labor savings, use the Grip-Lok® Autofeed Fastening System. See page 43 for more details on the Autofeed System.

## PRODUCT CHART REFERENCE

Thermal-Grip® ci Prong Washer only

DIAMETER	PART#	QUANTITY	WEIGHT
2"	TGPRONG	1,000 pcs.	9 lbs.

## PRODUCT CHART REFERENCE

Grip-Deck® self-drilling screw



Reference page 41,42 for screw information.

\* Specified for use with air-barrier rated wall assemblies such as Thermax™ Wall System, CavityComplete® Wall System, Ecomax™ ci Wall Solution, etc.  
 \*\* Recommended screw length 1" longer than total material thickness.

# Grip-Deck TubeSeal™

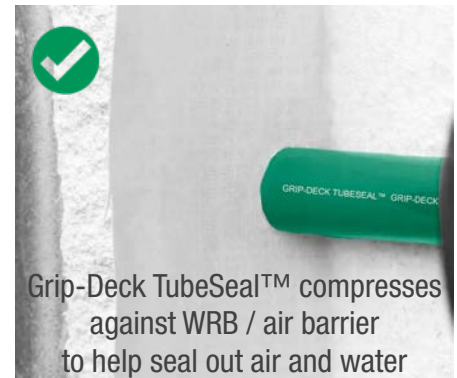
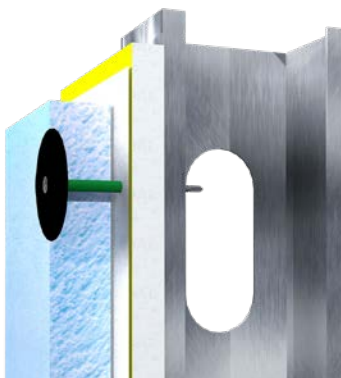
## FEATURES

- Grip-Deck TubeSeal™ aids in sealing blind fastener penetrations of a WRB or air-barrier behind insulation
- Tube inserts through the insulation then compresses on the surface of the WRB / Air barrier AND on the underside of the washer effectively creating a seal against air and moisture penetration
- UV resistant TubeSeal is suitable for all weather climates

## PRODUCT REFERENCE CHART

Grip-Deck TubeSeal™ w/ Thermal-Grip® washers

WASHER TYPE*	PART#	QUANTITY	SCREW TYPE	INSULATION THICKNESS
Thermal-Grip	TS1000SDS-TG	500	SDS	1"
Thermal-Grip	TS1500SDS-TG	500	SDS	1.5"
Thermal-Grip	TS2000SDS-TG	500	SDS	2"
Thermal-Grip	TS2500SDS-TG	250	SDS	2.5"
Thermal-Grip	TS3000SDS-TG	250	SDS	3"
Thermal-Grip	TS3500SDS-TG	250	SDS	3.5"
Thermal-Grip	TS4000SDS-TG	250	SDS	4"
Thermal-Grip	TS1000SDS-TG	500	HiLo	1"
Thermal-Grip	TS1500SDS-TG	500	HiLo	1.5"
Thermal-Grip	TS2000SDS-TG	500	HiLo	2"
Thermal-Grip	TS2500SDS-TG	250	HiLo	2.5"
Thermal-Grip	TS3000SDS-TG	250	HiLo	3"
Thermal-Grip	TS3500SDS-TG	250	HiLo	3.5"
Thermal-Grip	TS4000SDS-TG	250	HiLo	4"



# Thermal-Grip® IP Insulation Fastening System

## FEATURES

- Rapidly attaches rigid insulation and mineral wool to concrete, masonry, and tilt up / precast walls
- FAST! No pre-drilling necessary, just point and shoot
- Firing systems uses lithium-ion battery with 165mm fuel cell



### IP50D

for mid-high range PSI Masonry

### IP40D

for low-mid range PSI Masonry

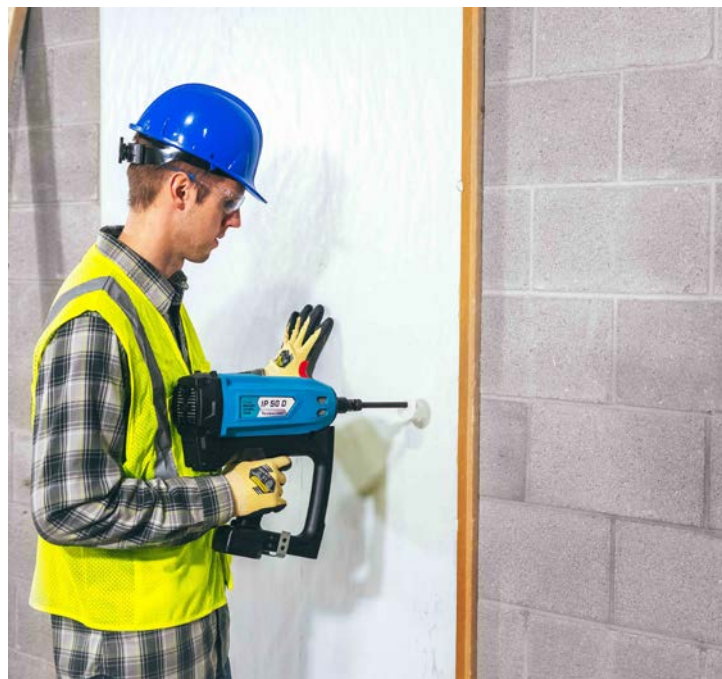
## FASTEST METHOD TO INSULATE MASONRY

IP50D and IP40D concrete pinner tools are designed to attach insulation to a concrete or masonry substrate. IP40D is primarily designed for low-mid range PSI masonry applications. IP50D is primarily designed for mid-high range PSI masonry applications.

## PRODUCT REFERENCE CHART

Thermal-Grip® IP Insulation Fastening System

PART#	QUANTITY	WEIGHT
IP50D	1 unit	16 lbs.
IP40D	1 unit	16 lbs.



## THERMAL-GRIP® INSULATION PINS

Anchor lengths available for 1" to 6" thickness. Large 2 1/4" diameter washer head secures insulation. See page 30,31 for available pin lengths.





SHOOT it. SCREW it. NAIL it.

# Plasti-Grip® ci Prong Washer

## FEATURES

- 1 3/4" dia. plastic plate
- Compatible with screws / nails. Shoot it, screw it, or nail it!
- Pre-spotting prongs for on-the-wall screw assembly
- Flexible perimeter flattens without tearing insulation facer
- Made in USA

## SHOOT IT, SCREW IT, OR NAIL IT!

The Plasti-Grip® ci Prong Washer is designed with a stiffened center and a flexible perimeter, allowing it to be used with a nail gun or hammer, as well as a screw gun.

## LABOR-SAVING PRONGS

Dual prongs enable pre-spotting for on-the-wall screw assembly. For even more labor savings, use the Grip-Lok® Autofeed Fastening System. See page 43 for details.



## PRODUCT REFERENCE CHART

Plasti-Grip® ci Prong Washer only

DIAMETER	PART#	QUANTITY	WEIGHT
1 3/4"	PGPRONG	1,000 pcs.	5.6 lbs.

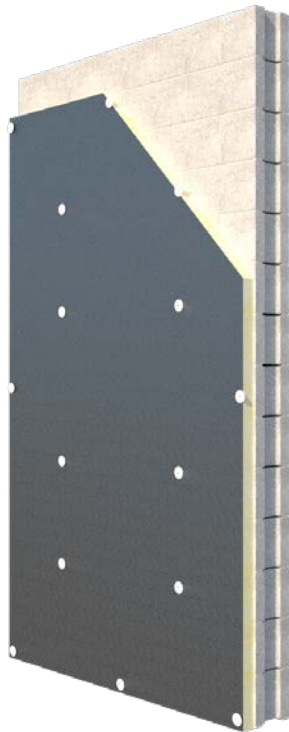
\* Use proper fastener length based on application substrate. Contact for questions



# Plasti-Grip® PMF (Plastic Masonry Fastener)

## FEATURES

- Round 2 1/4" dia. plastic head
- Simple to install: Pre-drill and hammer flush
- No pins, screws, or adhesives required
- Pre-drill hole with 5/16" masonry bit
- Solid plastic design reduces thermal bridging



## PRODUCT REFERENCE CHART

Plasti-Grip® PMF (Plastic Masonry Fastener)

LENGTH*	PART#	QUANTITY	WEIGHT	INSULATION THICKNESS
2"	PMF2000	250 pcs.	3.7 lbs.	1/2" - 3/4"
2 3/4"	PMF2750	250 pcs.	4.3 lbs.	1" - 1 1/2"
3 1/2"	PMF3500	250 pcs.	5.0 lbs.	1 1/2" - 2"
4 1/2"	PMF4500	250 pcs.	5.6 lbs.	2 1/2" - 3"
5 3/8"	PMF5375	200 pcs.	5.4 lbs.	3 1/2" - 4"
6 1/4"	PMF6250	200 pcs.	8.1 lbs.	4 1/4" - 5"

\* Recommended anchor length 1 1/2"-2" longer than total insulation thickness.

# MINERAL WOOL

Fasteners to attach mineral wool



Mechanical attachment of mineral wool insulation.



# Grip-Lok® Hurricane Washer



## FEATURES

- Large 3" dia. plastic washers prevents crushing of insulation
- Compatible with nails and screws
- Strongest hold for high wind velocity areas

## PRODUCT REFERENCE CHART

Grip-Lok® Hurricane Washer only

DIAMETER	PART#	QUANTITY	WEIGHT
3"	GLHURRICANE	1,000 pcs.	22.0 lbs.

# GRIP-LOK® MW PLATE



EPDM gasket on screw extends through the plate and compresses against the air barrier to help seal the screw penetration



## FEATURES

- Adaptable for 1"-5" mineral wool
- Shoot it, screw it, or nail it
- All substrates including wood, metal, and masonry
- Mill galvanized to prevent corrosion
- Unlike adhesive stick pins, provides permanent attachment
- Curled sides provide rigidity and prevent sharp edges
- Recommended use with optional Grip-Deck® gasket screws

## PRODUCT REFERENCE CHART

Grip-Lok® MW Plate

PRODUCT	PART#	QUANTITY	WEIGHT
Grip-Lok MW Plate	GLMW-1	250 pcs.	22.5 lbs.
Pan Head Screws	GDMW1750	1,000 pcs.	6.4 lbs.
Gasketed Pan Head	GDMW1750G	1,000 pcs.	6.6 lbs.

\* Various screw options available depending on substrate

# Grip-Deck TubeSeal™

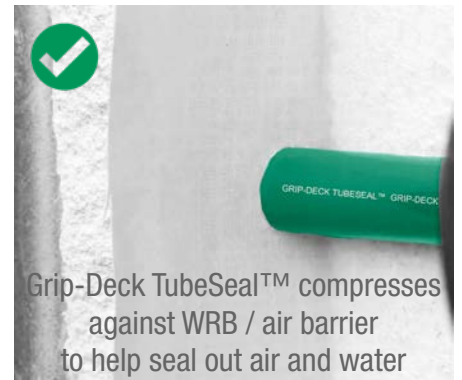
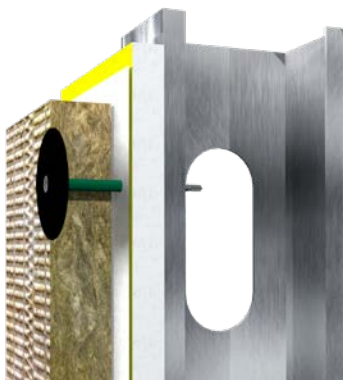
## FEATURES

- Grip-Deck TubeSeal™ aids in sealing blind fastener penetrations of a WRB or air-barrier
- Tube inserts through the insulation then compresses on the surface of the WRB / Air barrier AND on the underside of the washer effectively creating a seal against air and moisture penetration
- UV resistant TubeSeal is suitable for all weather climates
- Available pre-assembled with various screws/washers

## PRODUCT REFERENCE CHART

Grip-Deck TubeSeal™ w/ Thermal-Grip® washers

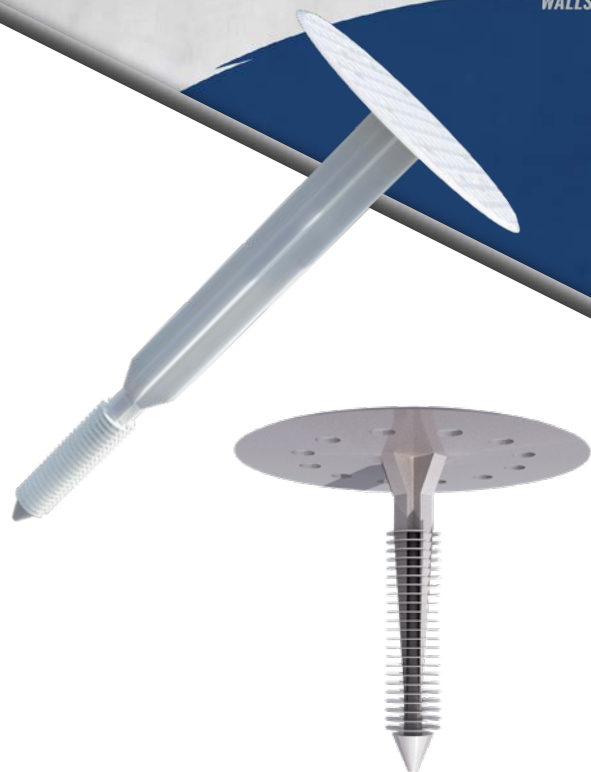
WASHER TYPE*	PART#	QUANTITY	SCREW TYPE	INSULATION THICKNESS
Thermal-Grip	TS1000SDS-TG	500	SDS	1"
Thermal-Grip	TS1500SDS-TG	500	SDS	1.5"
Thermal-Grip	TS2000SDS-TG	500	SDS	2"
Thermal-Grip	TS2500SDS-TG	250	SDS	2.5"
Thermal-Grip	TS3000SDS-TG	250	SDS	3"
Thermal-Grip	TS3500SDS-TG	250	SDS	3.5"
Thermal-Grip	TS4000SDS-TG	250	SDS	4"
Thermal-Grip	TS1000SDS-TG	500	HiLo	1"
Thermal-Grip	TS1500SDS-TG	500	HiLo	1.5"
Thermal-Grip	TS2000SDS-TG	500	HiLo	2"
Thermal-Grip	TS2500SDS-TG	250	HiLo	2.5"
Thermal-Grip	TS3000SDS-TG	250	HiLo	3"
Thermal-Grip	TS3500SDS-TG	250	HiLo	3.5"
Thermal-Grip	TS4000SDS-TG	250	HiLo	4"



# Plasti-Grip<sup>®</sup> PMF (Plastic Masonry Fastener)

## FEATURES

- Use to attach mineral wool insulation to concrete/masonry
- Solid plastic design reduces thermal bridging
- No pins, screws, or adhesives required
- Simple to install: Pre-drill and hammer flush
- Pre-drill hole with 5/16" masonry bit



## PRODUCT REFERENCE CHART

Plasti-Grip<sup>®</sup> PMF (Plastic Masonry Fastener)

LENGTH*	PART#	QUANTITY	WEIGHT	INSULATION THICKNESS
2"	PMF2000	250 pcs.	3.7 lbs.	1/2" - 3/4"
2 3/4"	PMF2750	250 pcs.	4.3 lbs.	1" - 1 1/2"
3 1/2"	PMF3500	250 pcs.	5.0 lbs.	1 1/2" - 2"
4 1/2"	PMF4500	250 pcs.	5.6 lbs.	2 1/2" - 3"
5 3/8"	PMF5375	200 pcs.	5.4 lbs.	3 1/2" - 4"
6 1/4"	PMF6250	200 pcs.	8.1 lbs.	4 1/4" - 5"



\* Recommended anchor length 1 1/2"-2" longer than total insulation thickness.



# Thermal-Grip® Impaling Fastener

## FEATURES

- Energy efficient thermal break solution
- Reduces penetrations - attach building wrap and insulation
- For use with sheet & fluid applied air barriers
- Helps maintain air barrier performance
- Optional retaining disk secures insulation on pin

## PRODUCT REFERENCE CHART

Thermal-Grip® Impaling Fastener

PIN LENGTH**	PART#	QUANTITY	WEIGHT
1 1/2"	TGIMP1500	1,000 pcs.	14.7 lbs.
2"	TGIMP2000	1,000 pcs.	15.3 lbs.
2 1/2"	TGIMP2500	1,000 pcs.	19.2 lbs.
2 5/8"	TGIMP2625	1,000 pcs.	19.8 lbs.
3"	TGIMP3000	1,000 pcs.	21.3 lbs.
3 1/2"	TGIMP3500	1,000 pcs.	27.2 lbs.



\* Sold with screws. Various lengths and styles available depending on substrate.

# Thermal-Grip® IP Insulation Fastening System

## FEATURES

- Rapidly attaches rigid insulation and mineral wool to concrete, masonry, and tilt up / precast walls
- FAST! No pre-drilling necessary, just point and shoot
- Firing systems uses lithium-ion battery with 165mm fuel cell



### IP50D

for mid-high range PSI Masonry

### IP40D

for low-mid range PSI Masonry

## FASTEST METHOD TO INSULATE MASONRY

IP50D and IP40D concrete pinner tools are designed to attach insulation to a concrete or masonry substrate. IP40D is primarily designed for low-mid range PSI masonry applications. IP50D is primarily designed for mid-high range PSI masonry applications.

## PRODUCT REFERENCE CHART

Thermal-Grip® IP Insulation Fastening System

PART#	QUANTITY	WEIGHT
IP50D	1 unit	16 lbs.
IP40D	1 unit	16 lbs.



## THERMAL-GRIP® INSULATION PINS

Anchor lengths available for 1" to 6" thickness. Large 2 1/4" diameter washer head secures insulation. See page 30,31 for available pin lengths.



# MASONRY CAVITY WALL ANCHORS

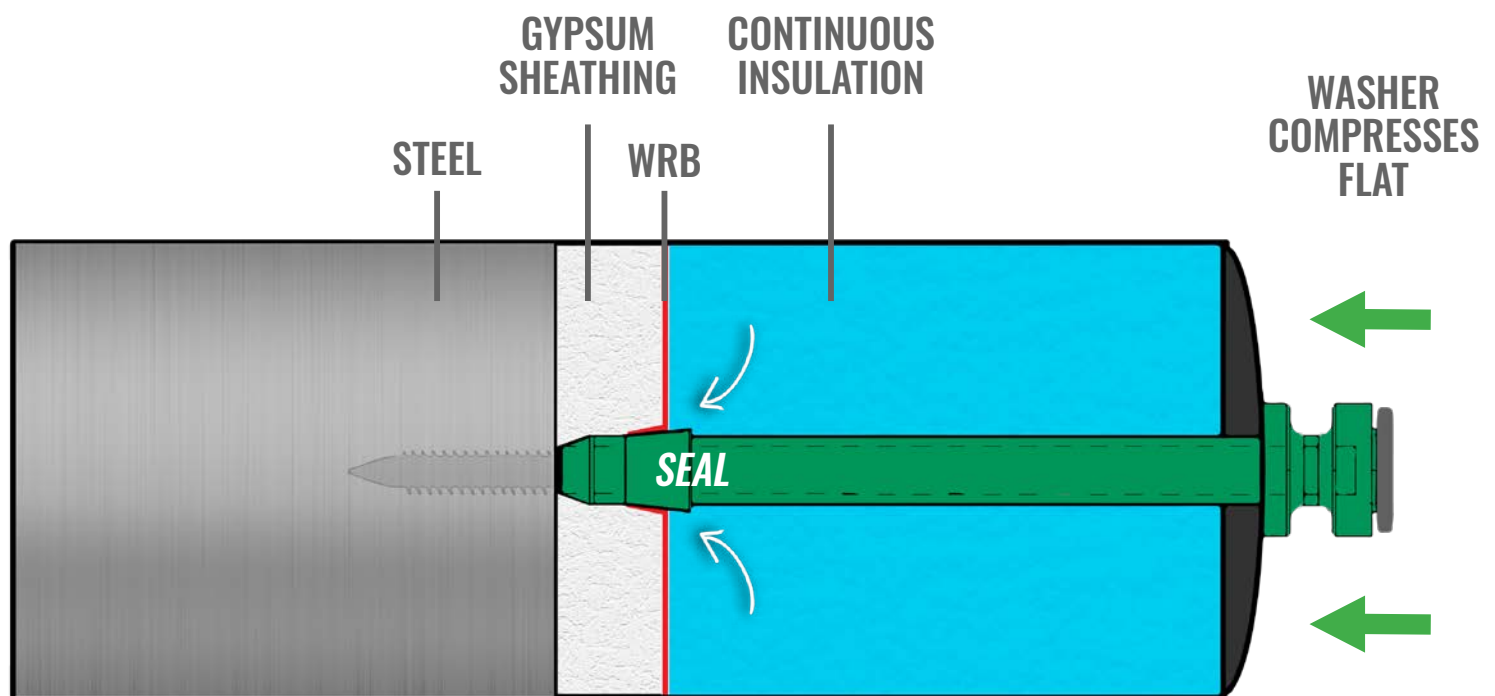
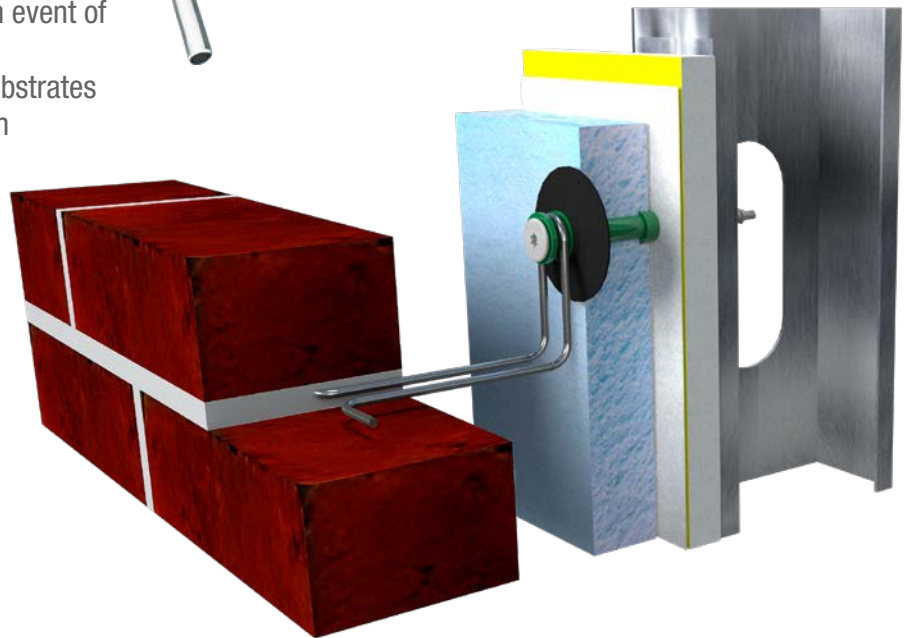




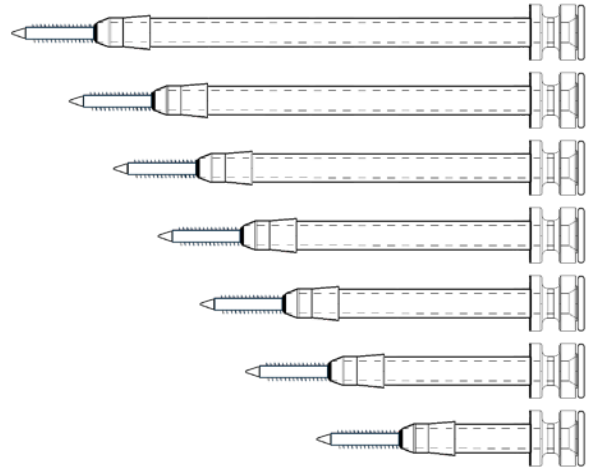
# Thermal-Grip<sup>®</sup> MVA (Masonry Veneer Anchor)

## FEATURES

- Uniquely designed for minimal thermal-bridging
- Wedge Seal maintains air-barrier performance
- Redundant fire-safety feature helps retain wire in event of a fire in the wall cavity
- Suitable for steel stud, wood stud, or masonry substrates
- Wire tie design allows for easy one hand insertion



# Thermal-Grip® MVA (Masonry Veneer Anchor) *Available Lengths*



## PRODUCT REFERENCE CHART

Thermal-Grip® MVA w/ HD Screw for assemblies over HEAVY gauge steel substrates

PART#	SCREW TYPE	ASSEMBLY THICKNESS	QUANTITY
MVA-HD-1500	HD - Heavy Duty	1.5"	250 pcs
MVA-HD-2000	HD - Heavy Duty	2"	250 pcs
MVA-HD-2500	HD - Heavy Duty	2.5"	250 pcs
MVA-HD-3000	HD - Heavy Duty	3"	250 pcs
MVA-HD-3500	HD - Heavy Duty	3.5"	250 pcs
MVA-HD-4000	HD - Heavy Duty	4"	250 pcs



## PRODUCT REFERENCE CHART

Thermal-Grip® MVA w/ LD Screw for assemblies over light gauge steel, wood, or masonry substrates

PART#	SCREW TYPE	ASSEMBLY THICKNESS	QUANTITY
MVA-LD-1500	LD - Light Duty	1.5"	250 pcs
MVA-LD-2000	LD - Light Duty	2"	250 pcs
MVA-LD-2500	LD - Light Duty	2.5"	250 pcs
MVA-LD-3000	LD - Light Duty	3"	250 pcs
MVA-LD-3500	LD - Light Duty	3.5"	250 pcs
MVA-LD-4000	LD - Light Duty	4"	250 pcs



## PRODUCT REFERENCE CHART

Thermal-Grip® MVA Wire Ties

PART#	MATERIAL TYPE	AIR GAP	QUANTITY
MVA-WIRE300SS	Stainless Steel	1"	250 pcs
MVA-WIRE400SS	Stainless Steel	2"	250 pcs
MVA-WIRE300HD	Hot Dipped Galv.	1"	250 pcs
MVA-WIRE400HD	Hot Dipped Galv.	2"	250 pcs

Additional wire tie lengths available. Please call for details.



# GYPSUM SHEATHING

Fasteners to attach gypsum sheathing.



Enhanced mechanical attachment of gypsum sheathing with solid cap steel washers.



# Grip-Plate® Gypsum Washer



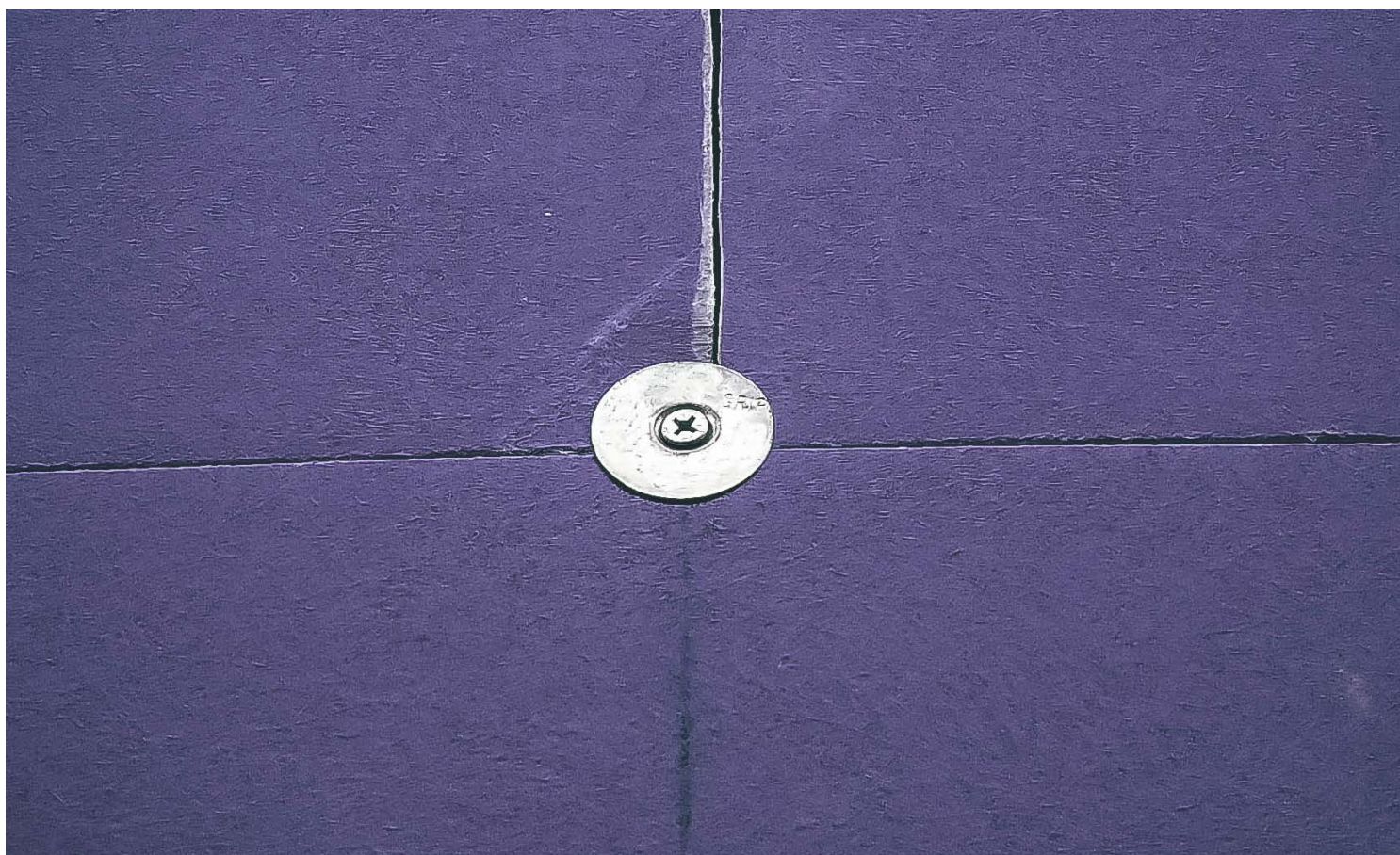
## FEATURES

- 1 1/4" dia. galvanized steel
- Compatible with #6-#10 screws
- Save labor by spanning boards with fewer penetrations

## PRODUCT REFERENCE CHART

Grip-Plate® Gypsum Washer (SMALL CENTER HOLE FOR NAILS & PINS)

DIAMETER	PART#	QUANTITY	WEIGHT
1 1/4"	GPGWSmall1000	1,000 pcs.	6.7 lbs.
1 1/4"	GPGWSmall5000	5,000 pcs.	35.0 lbs.



\* Consult gypsum sheathing manufacturer's installation guidelines for requirements.

# COMMERCIAL BUILDING WRAP

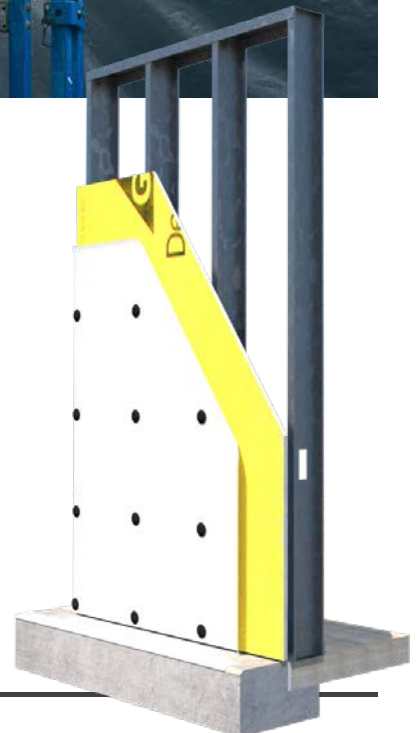
Fasteners to attach Commercial Building Wrap



Washers used for attaching commercial building wrap applications. Use as recommended by every major air barrier / wrap manufacturer.

For Dupont™ Tyvek® attachment, use the Thermal-Grip FastCap™.

[www.thermalgripfastcap.com](http://www.thermalgripfastcap.com)



# Thermal-Grip® Flat Washer

## FEATURES

- 2" dia. washer with solid cap design (no keyholes)
- Stiffened center "Bullseye" ring prevents fastener pull-through
- Flexible perimeter compresses on surface / reduces tearing



## PRODUCT REFERENCE CHART

Thermal-Grip® Flat Washer

DIAMETER	PART#	QUANTITY	WEIGHT
2"	TGFlatBugle	1,000 pcs.	8.8 lbs.

# PLASTI-GRIP®

## CBW Washer

## FEATURES

- Round 1 3/4" dia. plastic tapered plate (with keyholes)
- Attaches commercial building wrap to wood or steel
- Flexible perimeter reduces tearing



## PRODUCT REFERENCE CHART

Plasti-Grip® CBW Washer

DIAMETER	PART#	QUANTITY	WEIGHT
1 3/4"	PGCBW	1,000 pcs.	5.3 lbs.

# LATH

Fasteners to attach Lath for adhered masonry / stone veneer



Fasteners to attach insulation and lath for all stucco and lathing:

- One-coat stucco
- 3-coat stucco
- Insulated stucco wall systems

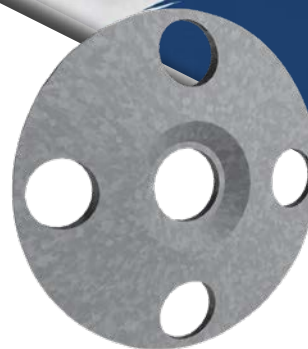




# Grip-Plate<sup>®</sup> Lath & Plaster Washer

## FEATURES

- 1 1/4" dia. galvanized steel
- Compatible #6-#10 screws
- Keyholes for plaster / basecoat bonding
- Use as tested or recommended to support heavy adhered masonry cladding over layer of continuous insulation
- Available with either large or small center hole



## PRODUCT REFERENCE CHART

Grip-Plate<sup>®</sup> Lath & Plaster Washer

DIAMETER	PART#	QUANTITY	WEIGHT
1 1/4"	GPPWSmall1000	1,000 pcs.	6.7 lbs.
1 1/4"	GPPWSmall5000	5,000 pcs.	35.0 lbs.
1 1/4"	GPPWLarge1000	1,000 pcs.	6.6 lbs.
1 1/4"	GPPWLarge5000	5,000 pcs.	35.0 lbs.

# Grip-Plate® Tab Washer



## FEATURES

- 1 1/4" dia. galvanized steel plate
- 4 tabs for pre-spotting and lath engagement
- Keyholes for plaster / base coat embedment
- Compatible with #6-#10 screws

## PRODUCT REFERENCE CHART

Grip-Plate® Tab Washer

DIAMETER	PART#	QUANTITY	WEIGHT
1 1/4"	GPTab1000	1,000 pcs.	8.2 lbs.
1 1/4"	GPTab5400	5,400 pcs.	44.4 lbs.

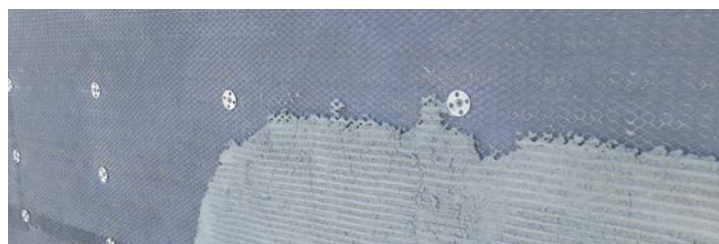


# Grip-Deck TubeSeal™

with Grip-Plate® Washers

## FEATURES

- Grip-Deck TubeSeal™ aids in sealing blind fastener penetrations of a WRB or air-barrier
- Tube inserts through the lath & insulation then compresses on the surface of the air barrier/WRB AND on the underside of the washer effectively creating a seal against air and moisture penetration
- UV resistant TubeSeal is suitable for all weather climates
- Available pre-assembled with various screws/washers



## PRODUCT REFERENCE CHART

Grip-Deck TubeSeal™ w/ Grip-Plate® Lath & Plaster Washers

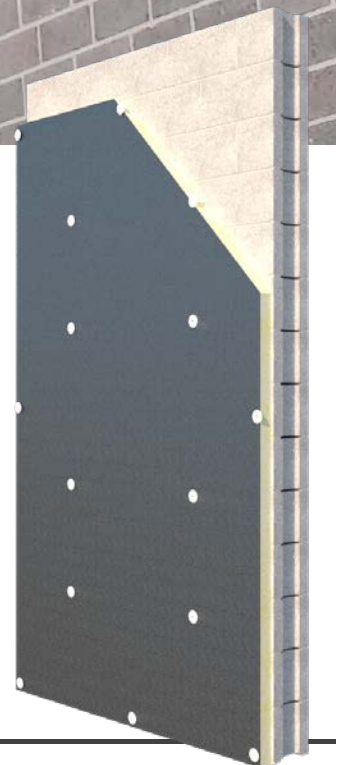
WASHER TYPE*	PART#	QUANTITY	SCREW TYPE	INSULATION THICKNESS
Grip-Plate	TS1000SDS-GP	500 pcs.	SDS	1"
Grip-Plate	TS1000SDS-GP	500 pcs.	SDS	1.5"
Grip-Plate	TS1000SDS-GP	500 pcs.	SDS	2"
Grip-Plate	TS1000SDS-GP	250 pcs.	SDS	2.5"
Grip-Plate	TS1000SDS-GP	250 pcs.	SDS	3"
Grip-Plate	TS1000SDS-GP	250 pcs.	SDS	3.5"
Grip-Plate	TS1000SDS-GP	250 pcs.	SDS	4"
Grip-Plate	TS1000SDS-GP	500 pcs.	HiLo	1"
Grip-Plate	TS1000SDS-GP	500 pcs.	HiLo	1.5"
Grip-Plate	TS1000SDS-GP	500 pcs.	HiLo	2"
Grip-Plate	TS1000SDS-GP	250 pcs.	HiLo	2.5"
Grip-Plate	TS1000SDS-GP	250 pcs.	HiLo	3"
Grip-Plate	TS1000SDS-GP	250 pcs.	HiLo	3.5"
Grip-Plate	TS1000SDS-GP	250 pcs.	HiLo	4"

# Tilt-Wall / Masonry

Fasteners to attach insulation to concrete / CMU block



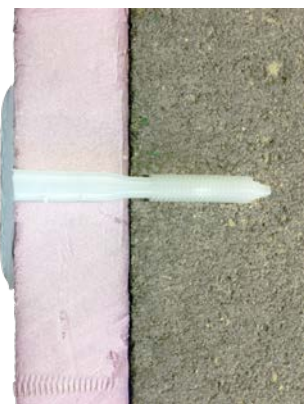
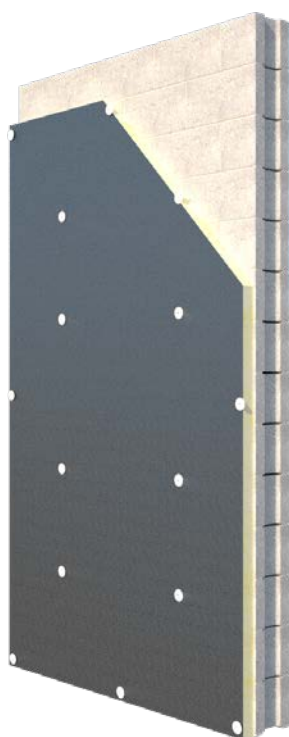
The only fasteners recommended, tested, or specified by leading manufacturers including: DuPont, Owens Corning, R-Max, Hunter, IKO, Carlisle, Atlas, Firestone, and Kingspan.



# Plasti-Grip® PMF (Plastic Masonry Fastener)

## FEATURES

- Round 2 1/4" dia. plastic head
- Simple to install: Pre-drill and hammer flush
- No pins, screws, or adhesives required
- Pre-drill hole with 5/16" masonry bit
- Solid plastic design reduces thermal bridging



## PRODUCT REFERENCE CHART

Plasti-Grip® PMF (Plastic Masonry Fastener)

LENGTH*	PART#	QUANTITY	WEIGHT	INSULATION THICKNESS
2"	PMF2000	250 pcs.	3.7 lbs.	1/2" - 3/4"
2 3/4"	PMF2750	250 pcs.	4.3 lbs.	1" - 1 1/2"
3 1/2"	PMF3500	250 pcs.	5.0 lbs.	1 1/2" - 2"
4 1/2"	PMF4500	250 pcs.	5.6 lbs.	2 1/2" - 3"
5 3/8"	PMF5375	200 pcs.	5.4 lbs.	3 1/2" - 4"
6 1/4"	PMF6250	200 pcs.	8.1 lbs.	4 1/4" - 5"

\* Recommended anchor length 1 1/2" - 2" longer than total insulation thickness.



**IP50D**

for mid-high range PSI  
Masonry

**IP40D**

for low-mid range PSI  
Masonry

# Thermal-Grip® IP Insulation Fastening System

**FEATURES**

- FAST! No pre-drilling necessary, just point and shoot
- Rapidly attaches rigid insulation and mineral wool to concrete, masonry, and tilt up / precast walls
- Firing systems uses lithium-ion battery with 165mm fuel cell

**FASTEST METHOD TO INSULATE MASONRY**

The IP50D and IP40D are concrete pinner tools designed to attach insulation to a concrete or masonry substrate. The IP40D is primarily designed for low-mid range PSI masonry applications. The IP50D is primarily designed for mid-high range PSI masonry applicaitons.

**PRODUCT REFERENCE CHART**

Insulation Fastening System

PART#	QUANTITY	WEIGHT
IP50D	1 unit	16 lbs.
IP40D	1 unit	16 lbs.



**THERMAL-GRIP INSULATION PINS**

Anchor lengths available for 1" to 6" thickness. Large 2" diameter washer head secures insulation. See page 33 for available pin lengths.



## PRODUCT REFERENCE CHART

Thermal-Grip® IP Insulation Fastening System



PART#	ANCHOR LENGTH	PIECES PER CARTON
TGIP1000	1"	500
TGIP1500	1.5"	500
TGIP2000	2"	500
TGIP2500	2.5"	500
TGIP3000	3"	500
TGIP4000	4"	500
TGIP5000	5"	250
TGIP6000	6"	250



# Insulation Track System



## **FLEX-TITE**

for mid-high range PSI  
Masonry



## **J-CHANNEL**

for low-mid range PSI  
Masonry

## **FEATURES**

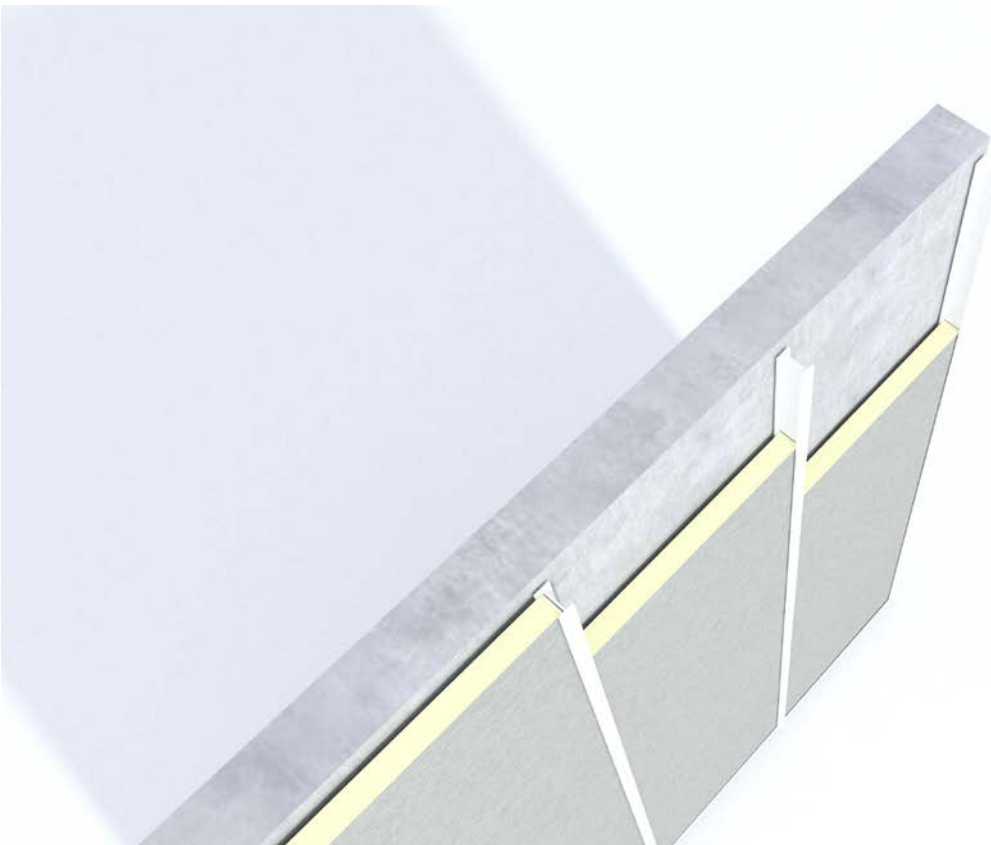
- ENERGY EFFICIENT DESIGN - Flex-tie technology seals tightly against the insulation board to reduce thermal loss at seams
- REDUCES COST - System is designed to withstand the impact of nail guns and saws, saving labor cost
- CONVENIENT FASTENING - All Flex-Time and Quick Clip systems have fastening leg for easy access with nail gun
- CAN BE PAINTED - If custom color is required, Victory Bear joint cover can be primed and painted

## **INSTALLATION**

Step 1 - Align the Flex-Tie J-Channel horizontally at the desired height and check for level. Fasten into place.

Step 2 - Align the Flex-Site female clip vertically at desired spacing and check for plumb. Nail 3/4" to 1" into place.

Step 3 - Install insulation and Flex-Tite male, then repeat.



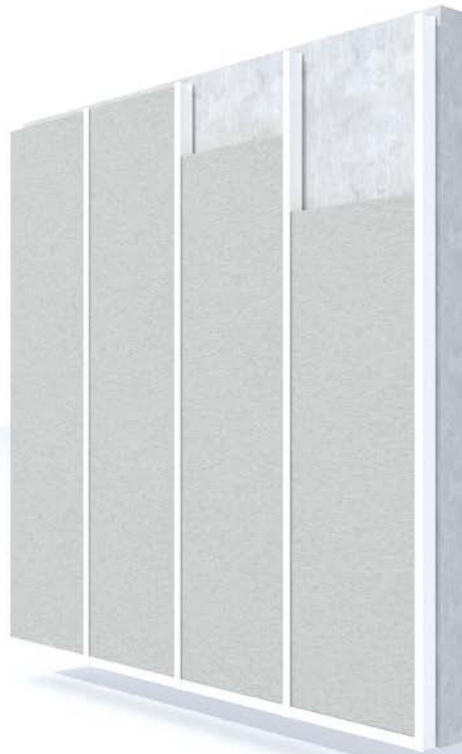


# PRODUCT REFERENCE CHART

Insulation Track System



SIZE	FEMALE	MALE	J-CHANNEL
			*Custom
4"	FTF-3	FTM-14	NA
3.5"	FTF-3	FTM-10	NA
3.2"	FTF-3	FTM-06	1560
3"	FTF-3	FTM-05	1547
2.75"	FTF-2	FTM-13	1547*
2.5"	FTF-2	FTM-10	1153
2.3"	FTF-2	FTM-09	1153*
2.25"	FTF-2	FTM-09	1541
2"	FTF-2	FTM-05	1541
1.75"	FTF-1	FTM-09	1541*
1.5"	FTF-1	FTM-06	769
1.25"	FTF-1	FTM-03	751
1"	FTF-1	FTM-03	1540



# EXTERIOR INSULATION FINISHING SYSTEMS

Fasteners for Exterior Insulation Finish Systems (EIFS)



Fasteners to attach EPS and XPS foam for PB and PM EIFS.



# Plasti-Grip® PBLP2 Prong Washer

## FEATURES

- EIFS system manufacturer approved
- 2" dia. washer with keyholes for basecoat bonding
- Prong enables on-the-wall screw assembly
- No hand assembly required = labor and cost savings
- Available with self-drilling and hilo thread screws

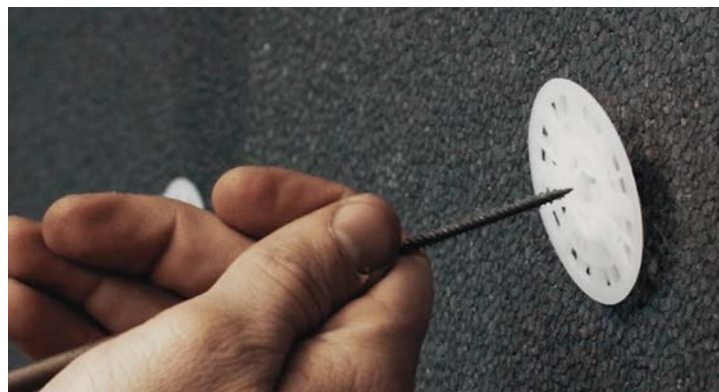


## THERMAL BREAK DESIGN

When installed, the screw head is recessed inside the Plasti-Grip® PBLP2 Washer away from the basecoat, causing a thermal break.

## EIFS WASHER

The 2" dia. washer with Grip-Deck® screws attaches EPS or XPS foam in polymer based (PB) EIFS assemblies.



## PRODUCT REFERENCE CHART

Plasti-Grip® PBLP2 PRONG WASHER (PB EIFS)

DIAMETER	PART#	QUANTITY	WEIGHT
2"	PBLP2PRONG	1,000 pcs.	9.5 lbs.

Grip-Deck® Screws available 1 5/8" - 6" for steel or wood studs. See page 30,31 for details.

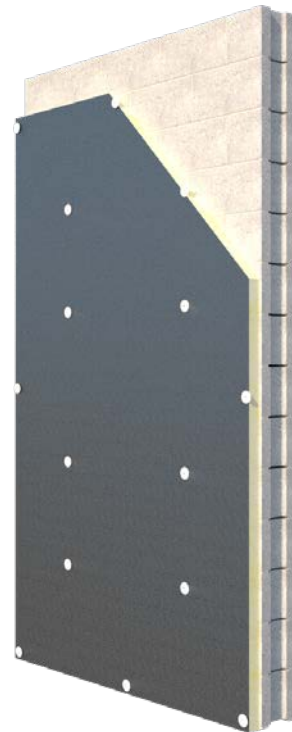


\* Pre-assembled washers and screws are available. Call for pricing and availability

# Plasti-Grip® PMF (Plastic Masonry Fastener)

## FEATURES

- Use to attach insulation to concrete / masonry
- Solid plastic design reduces thermal bridging
- No pins, screws, or adhesives required
- Simple to install: Pre-drill and hammer flush
- Pre-drill hole with 5/6" masonry bit



Plasti-Grip® PMF (Plastic Masonry Fastener)

LENGTH*	PART#	QUANTITY	WEIGHT	INSULATION THICKNESS
2"	PMF2000	250 pcs.	3.7 lbs.	1/2" - 3/4"
2 3/4"	PMF2750	250 pcs.	4.3 lbs.	1" - 1 1/2"
3 1/2"	PMF3500	250 pcs.	5.0 lbs.	1 1/2" - 2"
4 1/2"	PMF4500	250 pcs.	5.6 lbs.	2 1/2" - 3"
5 3/8"	PMF5375	200 pcs.	5.4 lbs.	3 1/2" - 4"
6 1/4"	PMF6250	200 pcs.	8.1 lbs.	4 1/4" - 5"

# Plasti-Grip® ci Prong Washer (PM EIFS)



## FEATURES

- Pre-spotting prongs for on-the-wall fastener assembly
- 1 3/4" dia. plastic tapered plate
- Compatible with screws and nails. Shoot it, screw it, nail it!
- Flexible perimeter reduces tearing of insulation facer
- Made in USA

## PRODUCT REFERENCE CHART

Plasti-Grip® ci Prong Washer

DIAMETER	PART#	QUANTITY	WEIGHT
1 3/4"	PLGPRONG	1,000 pcs.	5.6 lbs.

# PLASTI-GRIP®

## CBW Washer (PM EIFS)



## FEATURES

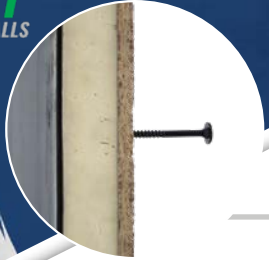
- Round 1 3/4" dia. plastic tapered plate
- Keyholes for base coat bonding in EIFS / Stucco
- Flexible perimeter reduces tearing

## PRODUCT REFERENCE CHART

Plasti-Grip® CBW Washer

DIAMETER	PART#	QUANTITY	WEIGHT
1 3/4"	PGCBW	1,000 pcs.	5.3 lbs.

\* Screws available. Please see page #40



# Screws for Structural Insulated Panels (SIP Screws)

## SIP LD Screw

For Light Duty Steel

### FEATURES

- For use with 16-20 gauge steel
- Epoxy coated
- #14 dia. with T-30 Star Drive (Bit included in bucket)
- 5/8" head dia.



## SIP HD Screw

For Heavy Duty Steel

### FEATURES

- For use with 12-16 gauge steel
- Epoxy coated
- #14 dia. with T-30 Star Drive (Bit included in bucket)
- 5/8" head dia.



## SIP TP Screw

For Wood

### FEATURES

- For use with wood substrates
- Epoxy coated
- #14 dia. with T-30 Star Drive (Bit included in bucket)
- 5/8" head dia.



## PRODUCT REFERENCE CHART

### SIP LD Screws



LENGTH	PART#	QUANTITY	WEIGHT
3"	SIPLD-03000	500 pcs.	14.1 lbs.
3 1/2"	SIPLD-03500	500 pcs.	16.1 lbs.
4"	SIPLD-04000	500 pcs.	18.4 lbs.
4 1/2"	SIPLD-04500	500 pcs.	20.1 lbs.
5"	SIPLD-05000	500 pcs.	22.5 lbs.
5 1/2"	SIPLD-05500	500 pcs.	24.4 lbs.
6"	SIPLD-06000	500 pcs.	26.3 lbs.
6 1/2"	SIPLD-06500	500 pcs.	28.2 lbs.
7"	SIPLD-07000	500 pcs.	30.3 lbs.
7 1/2"	SIPLD-07500	500 pcs.	32.3 lbs.
8"	SIPLD-08000	500 pcs.	34.8 lbs.
8 1/2"	SIPLD-08500	500 pcs.	18.2 lbs.
9"	SIPLD-09000	500 pcs.	19.4 lbs.
9 1/2"	SIPLD-09500	500 pcs.	20.0 lbs.
10"	SIPLD-10000	500 pcs.	21.5 lbs.
11"	SIPLD-11000	250 pcs.	23.3 lbs.
12"	SIPLD-12000	250 pcs.	24.8 lbs.
13"	SIPLD-13000	250 pcs.	26.8 lbs.
14"	SIPLD-14000	250 pcs.	29.0 lbs.
15"	SIPLD-15000	250 pcs.	30.7 lbs.
16"	SIPLD-16000	250 pcs.	32.3 lbs.

For attaching insulated nailbase / Structural Insulation Panels (SIP) to steel, wood, or CMU / concrete substrates.

## PRODUCT REFERENCE CHART

### SIP HD Screws



LENGTH	PART#	QUANTITY	WEIGHT
6"	SIPHD-06000	500 pcs.	31.7 lbs.
8"	SIPHD-08000	250 pcs.	20.9 lbs.
9 3/4"	SIPHD-09750	250 pcs.	25.2 lbs.
11 3/4"	SIPHD-11750	250 pcs.	30.0 lbs.

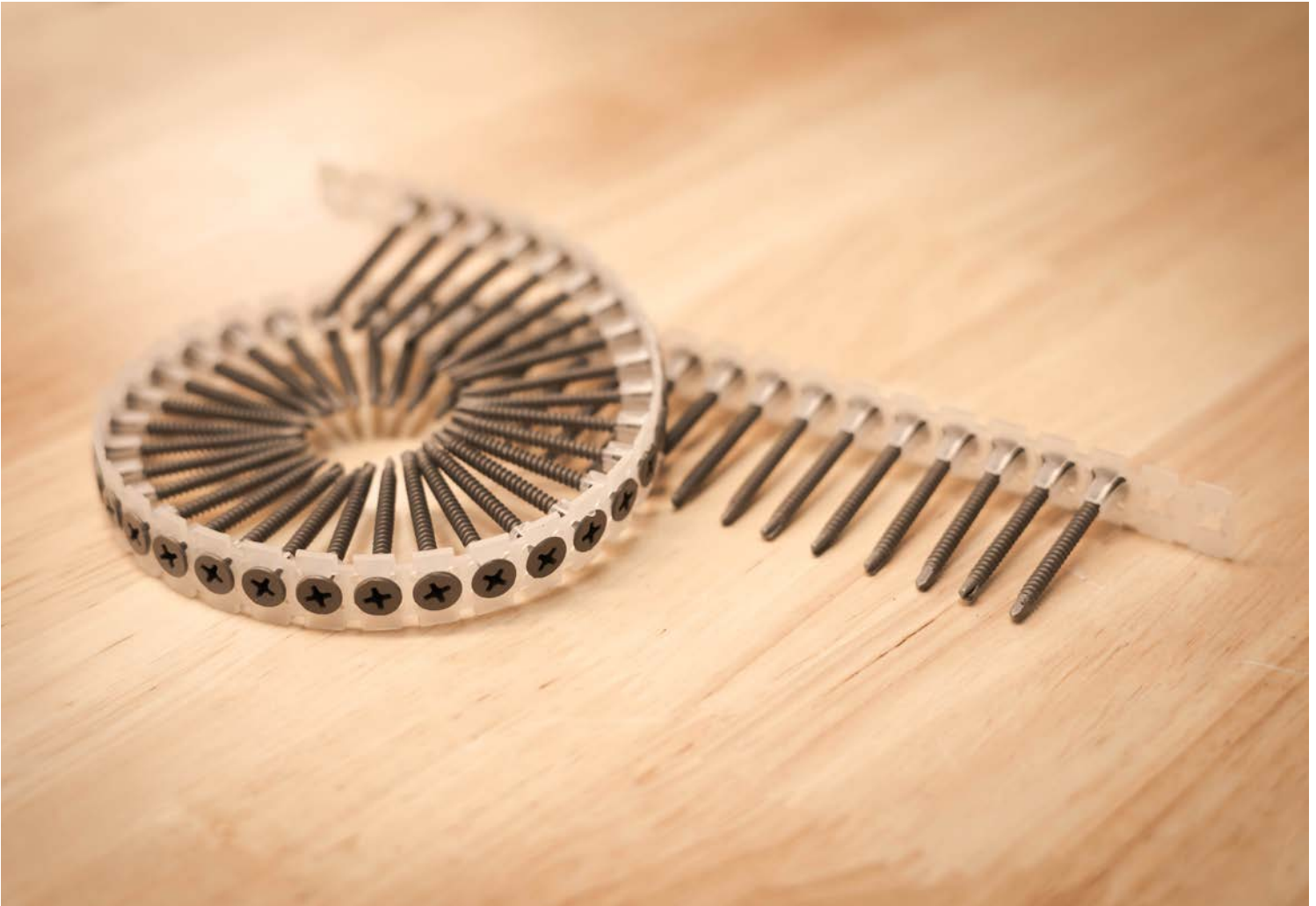
### SIP TP Screws



LENGTH	PART#	QUANTITY	WEIGHT
2"	SIPTP-02000	500 pcs.	10.1 lbs.
2 1/2"	SIPTP-02500	500 pcs.	12.1 lbs.
3"	SIPTP-03000	500 pcs.	14.1 lbs.
3 1/2"	SIPTP-03500	500 pcs.	16.1 lbs.
4"	SIPTP-04000	500 pcs.	18.4 lbs.
4 1/2"	SIPTP-04500	500 pcs.	20.1 lbs.
5"	SIPTP-05000	500 pcs.	22.5 lbs.
5 1/2"	SIPTP-05500	500 pcs.	24.4 lbs.
6"	SIPTP-06000	500 pcs.	26.3 lbs.
6 1/2"	SIPTP-06500	500 pcs.	28.2 lbs.
7"	SIPTP-07000	500 pcs.	30.3 lbs.
7 1/2"	SIPTP-07500	500 pcs.	32.3 lbs.
8"	SIPTP-08000	500 pcs.	34.8 lbs.
8 1/2"	SIPTP-08500	250 pcs.	18.2 lbs.
9"	SIPTP-09000	250 pcs.	19.4 lbs.
10"	SIPTP-10000	250 pcs.	21.5 lbs.
11"	SIPTP-11000	250 pcs.	23.3 lbs.
12"	SIPTP-12000	250 pcs.	24.8 lbs.
13"	SIPTP-13000	250 pcs.	26.8 lbs.
14"	SIPTP-14000	250 pcs.	29.0 lbs.
15"	SIPTP-15000	250 pcs.	30.7 lbs.
16"	SIPTP-16000	250 pcs.	32.3 lbs.
18"	SIPTP-18000	250 pcs.	39.0 lbs.

# SCREWS

## SCREWS FOR STEEL OR WOOD SUBSTRATES



### FEATURES

Corrosion resistant, ceramic coated screws. Available in lengths from 1-5/8" up to 6" in bulk or up to 3" collated. Use with TRUFAST® WALLS washers to attach various exterior building envelope materials including continuous insulation, commercial building wrap, and lath / stucco, etc.



# Grip-Deck® Self-Drilling Bulk or Collated Screw

## FEATURES

- Ceramic coating for corrosion resistance
- Self drilling for attachment to heavy gauge steel
- Phillips drive with bugle head
- Available in bulk or collated (for use with Grip-Lok® Autofeed Fastening System)

## PRODUCT REFERENCE CHART

Grip-Deck® Ceramic Coated Self-Drilling Bulk Screw

LENGTH	PART#	QUANTITY	WEIGHT
1 5/8"	GDSds1625	1,000 pcs.	5.7 lbs.
2"	GDSds2000	1,000 pcs.	6.3 lbs.
2 1/2"	GDSds2500	1,000 pcs.	10.2 lbs.
3"	GDSds3000	1,000 pcs.	12.3 lbs.
3 1/2"	GDSds3500	1,000 pcs.	18.1 lbs.
4"	GDSds4000	1,000 pcs.	21.1 lbs.
4 1/2"	GDSds4500	1,000 pcs.	24.3 lbs.
5 1/2"	GDSds5500	1,000 pcs.	28.6 lbs.
6"	GDSds6000	1,000 pcs.	31.2 lbs.



Grip-Deck® Ceramic Coated Self-Drilling Collated Screw

LENGTH	PART#	QUANTITY	WEIGHT
1 5/8"	GDSds1625Collated	1,000 pcs.	5.7 lbs.
2"	GDSds2000Collated	1,000 pcs.	6.3 lbs.
2 1/2"	GDSds2500Collated	1,000 pcs.	10.2 lbs.
3"	GDSds3000Collated	1,000 pcs.	12.3 lbs.



# Grip-Deck® HiLo Thread Bulk or Collated Screw

## FEATURES

- Ceramic coating for corrosion resistance
- HiLo thread for either wood or light gauge steel substrates
- Phillips drive with bugle head
- Available in bulk or collated (for use with Grip-Lok® Autofeed Fastening System)

## PRODUCT REFERENCE CHART

Grip-Deck® Ceramic Coated HiLo Thread Bulk Screw

LENGTH	PART#	QUANTITY	WEIGHT
1 5/8" - #7	GDHiLo1625	1,000 pcs.	5.6 lbs.
2" - #7	GDHiLo2000	1,000 pcs.	6.8 lbs.
2 1/2" - #8	GDHiLo2500	1,000 pcs.	9.2 lbs.
3" - #8	GDHiLo3000	1,000 pcs.	11.3 lbs.
3 1/2" - #10	GDHiLo3500	1,000 pcs.	16.9 lbs.
4" - #10	GDHiLo4000	1,000 pcs.	21.3 lbs.
5" - #10	GDHiLo5000	1,000 pcs.	25.9 lbs.
6" - #10	GDHiLo6000	1,000 pcs.	31.2 lbs.



Grip-Deck® Ceramic Coated HiLo Thread Collated Screw

LENGTH	PART#	QUANTITY	WEIGHT
1 5/8" - #7	GDHiLo1625Collated	1,000 pcs.	5.6 lbs.
2" - #7	GDHiLo2000Collated	1,000 pcs.	6.8 lbs.
2 1/2" - #8	GDHiLo2500Collated	1,000 pcs.	9.2 lbs.
3" - #8	GDHiLo3000Collated	1,000 pcs.	11.3 lbs.

# Grip-Lok® Autofeed Fastening System



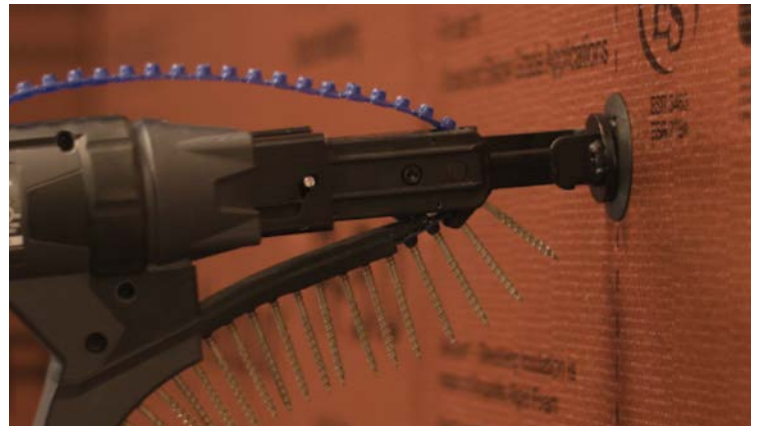
## FEATURES

- Labor saving compared to bulk screws
- Adaptors available for various washers to attach continuous insulation, building wrap, gypsum sheathing and lath
- Available either corded or cordless
- Adjustable depth setting helps prevent overdrive

## PRODUCT REFERENCE CHART

Grip-Lok® Autofeed Fastening System

PART #	QUANTITY	WEIGHT
GRIP-LOK Cordless300	1 unit	15.6 lbs.
GRIP-LOK Corded300	1 unit	13.6 lbs.





## OUR FASTENER FAMILY



ALTENLOH, BRINCK & CO. U.S., INC. (ABC U.S.) is part of the ALTENLOH, BRINCK & CO. Group headquartered in Ennepetal, Germany and is responsible for the manufacture, sales, and distribution of its TRUFAST®, SPAX® and TRUFAST® Walls brands of engineered fasteners for the North American construction market. ABC U.S. is located in Bryan (Northwestern), Ohio on the site of the former Trufast Corporation, which was acquired by ALTENLOH, BRINCK & CO. in December, 2005. TRUFAST® Walls (Formerly Rodenhouse Inc.) is located in Grand Rapids, Michigan and was acquired by ALTENLOH, BRINCK & CO. US. in August, 2017.

For more information, see [www.altenloh.us](http://www.altenloh.us).

## INNOVATIVE FASTENING SOLUTIONS

TRUFAST® is a well-known and respected name in the Commercial Roofing and SIP industries. Trufast products are manufactured by the ALTENLOH, BRINCK & CO Group. (ABC US) located in Northwest (Bryan) Ohio. Trufast products are sold throughout North America and parts of Western Europe by roofing and building materials distributors under the TRUFAST® brand, as well as under the private labels of many leading brands in the commercial roofing and construction industries.

[www.trufast.com](http://www.trufast.com)

## PRODUCTS

- Adhesives & Sealants
- Steel & Wood Deck Roofing Fasteners
- Structural Concrete Roofing Fasteners
- Pre-Assembled Fasteners & Tools
- Gypsum, Cementitious Wood Fiber & Lightweight Insulation Concrete Roofing Fasteners
- Base Sheet Fasteners
- SIP & Nail Base Fasteners
- Membrane & Insulation Plates
- Termination, Batten & Gravel Stop Bars
- Continuous Rigid Insulation, Building Wrap, EIFS & Stucco Fasteners & Tools



# SPAX®

ENGINEERED FASTENERS

## AMPLIFY YOUR CRAFT™

### PREMIUM QUALITY WOOD SCREWS

SPAX® fasteners are used by DIY-ers, woodworkers and pro contractors typically for residential construction and remodel projects. SPAX® fasteners can be found in big box retail, online distributors and many lumberyard builders material suppliers.

[www.spax.us](http://www.spax.us)



## A FASTENER FOR EVERY JOB.

Find the right screw or fastener for your next job with the largest variety of diameters, lengths and head styles in the industry.



# WARRANTY INFORMATION

TRUFAST® Walls warrants its manufactured products to be free from defects in materials or manufacturing. The sole remedy of purchaser under this warranty is that TRUFAST® Walls will repair or replace any of its products it finds to be defective. No warranties of fitness and no warranties of merchantability for a particular use or purpose are hereby made. This warranty is expressly in lieu of any other warranties implied or expressed. TRUFAST® will not be responsible for any consequential or incidental loss however caused.

In the event of a claim please contact TRUFAST® Walls at (T) 616-454-3100 or email [wallssales@trufast.com](mailto:wallssales@trufast.com)

# RETURN POLICY

All returns must be authorized by TRUFAST® Walls. Authorized returns may be subject to return shipping, restocking, and repackaging fees. For return authorizations please contact TRUFAST® Walls at (T) 616-454-3100 or email [wallssales@trufast.com](mailto:wallssales@trufast.com)

# CONTACT US

Phone: (616) 454-3100

Email: [wallssales@trufast.com](mailto:wallssales@trufast.com)

Fax: (616) 454-0404

Website: [www.trufastwalls.com](http://www.trufastwalls.com)

Billing Address:

Altenloh Brinck & Co US Inc

2105 Co Rd 12C

Bryan, Ohio 43506

Mailing Address:

TRUFAST Walls

130 Graham St. SW

Grand Rapids, MI 49503



SINCE 1823

**ALTENLOH, BRINCK & CO. U.S., INC.**