



# Product Catalog

---

*Drywall beyond expectations*

 **PABCO Gypsum**  
what the job demands®

# WALLBOARD YOU CAN COUNT ON



When you work with PABCO® Gypsum, you'll get more than just drywall, but **DRYWALL BEYOND YOUR EXPECTATIONS**. Drywall that is consistent and virtually trouble-free that installers prefer to hang. High-touch service where your PABCO representative responds quickly to your needs. Reliable technical advice from leading experts in the field.

Our broad range of gypsum panels includes mold, fire, glass mat, sound, and impact resistant boards for both residential and commercial applications. This includes QuietRock®, the original and most technically advanced sound reducing gypsum panel in the industry.

PABCO Gypsum's experienced sales and technical service teams are ready to assist you in the selection of gypsum products and solutions for you and your customers. We're here to help make your project a success.

## SALES SUPPORT

PABCO Gypsum  
QuietRock

## PHONE

(877) 449-7786  
(800) 797-8159

## EMAIL

info@PABCOgypsum.com  
info@QuietRock.com

## TECHNICAL SUPPORT

PABCO Gypsum  
QuietRock

(866) 282-9298  
(800) 797-8159

techservice@PABCOgypsum.com  
info@QuietRock.com

## WEBSITES

PABCOGypsum.com  
QuietRock.com

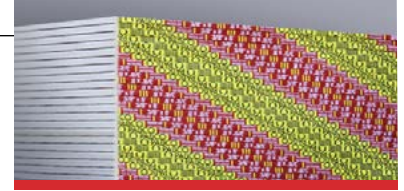


## STANDARD INTERIOR

### PABCO® REGULAR

PABCO Regular Gypsum Board is an interior panel composed of a naturally noncombustible, dimensionally stable, gypsum core. The core is wrapped in 100% recycled facing and backing paper that will accept most decorative finishes. Regular Gypsum Wallboard is intended for non-fire rated residential construction.

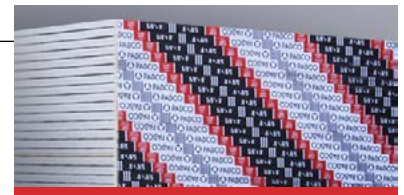
Thickness	Type	UL Core
1/4"	Regular	N/A
3/8"	Regular	N/A
1/2"	Regular	N/A



### PABCO FLAME CURB®

PABCO FLAME CURB gypsum panels are composed of a naturally combustible, fire-resistant gypsum core reinforced with glass fibers that provide increased strength and enhanced fire-resistant properties. The core is wrapped in 100% recycled facing and backing paper that will accept most decorative finishes. FLAME CURB is intended for fire-rated interior walls and ceilings in residential and commercial construction.

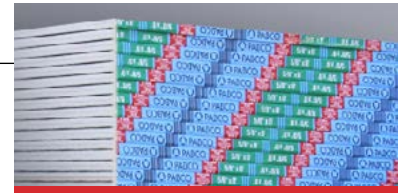
Thickness	Type	UL Core
1/2"	Super C	PC-C
5/8"	Type X	PG-11
5/8"	Type C	Type C
3/4"	Type X	PG-13



### PABCO MOLD CURB® Plus

MOLD CURB Plus is a mold and water-resistant gypsum panel that can be used for walls and ceilings where increased resistance to moisture is needed. The core is wrapped in 100% recycled facing and backing paper that is treated with mold and water-resistant agents to inhibit the growth of mold and mildew. Mold Resistance is rated at 10, the highest rating (ASTM D3273).

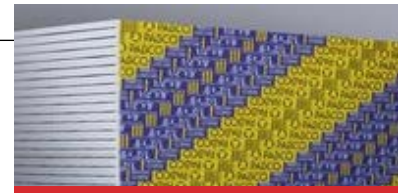
Thickness	Type	UL Core
1/2"	Regular	N/A
5/8"	Type X	PG-5W



### PABCO LITECORE®

PABCO LITECORE is a lightweight, dual purpose drywall product for use on walls and ceilings. It is dimensionally stable and resists sagging, buckling and warping. The panel features a naturally noncombustible gypsum core and 100% recycled facing and backing paper that will accept most decorative finishes. It is intended for use on non-structural, non-fire-rated applications.

Thickness	Type	UL Core
1/2"	LiteCore	N/A



### PABCO® FLEX

PABCO Flex gypsum panels are ideal for concave and convex surfaces in non-structural walls and ceilings. The unique thickness of PABCO Flex allows you to create a curved wall with a single layer application and feather the finish into an adjoining flat wall surface. The product is naturally noncombustible with a gypsum core wrapped in 100% recycled facing and backing paper that will accept most decorative finishes. PABCO Flex is intended for interior, non-fire rated residential construction.

Thickness	Type	UL Core
3/8"	FLEX	N/A

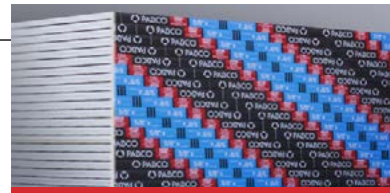


## IMPACT AND ABUSE PROTECTION

### PABCO ABUSE CURB®

PABCO ABUSE CURB is a Type X gypsum panel comprised of a proprietary high-density, fire-resistant gypsum core that incorporates the MOLD CURB Plus technology. It is designed for use in high traffic areas such as corridors in schools, hospitals and offices where surface abrasion, indentation, mold and water-resistance are needed. The core is encased in 100% recycled heavy mold and water-resistant paper facing and backing.

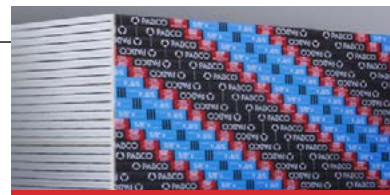
Thickness	Type	UL Core
5/8"	Type X	PG-5W



### PABCO® IMPACT RESISTANT

PABCO Impact Resistant drywall is a true super panel: Type X fire resistant, mold and water resistant, abrasion and impact resistant. The product is manufactured with a proprietary high density, fire resistant Type X core that incorporates an embedded fiberglass mesh to further enhance impact resistance.

Thickness	Type	UL Core
5/8"	Type X	PG-5W



## CEILING APPLICATIONS

### PABCO® INTERIOR CEILING

PABCO Interior Ceiling board is a sag resistant gypsum ceiling panel designed for non-fire rated interior ceiling applications. The ceiling panel is manufactured with a dimensionally stable, noncombustible gypsum core that is formulated to significantly reduce ceiling sag. PABCO Interior Ceiling board shows superior sag resistance when tested to ASTM 473 for humidified deflection. Can be installed perpendicular or parallel to framing at 24" on center per ICC-AC417.

Thickness	Type	UL Core
1/2"	Regular	N/A



### PABCO SOUND CURB™

SOUND CURB gypsum panels are ideal for floor/ceiling applications in multifamily residential and commercial projects. The 3/4" panels are comprised of a proprietary high-density Type X gypsum core and are perfect where fire resistance is a primary objective and additional mass is needed for improved Sound Transmission Class (STC) and Impact Insulation Class (IIC) performance. They also work well for lower frequencies where sound control has proven difficult.

Thickness	Type	UL Core
3/4"	Type X	PG-13



## EXTERIOR APPLICATIONS

### PABCO® GYPSUM SHEATHING

PABCO GYPSUM Sheathing is an economical moisture-resistant product and is designed for use as an exterior board providing a stable base for veneer finishing systems on residential and commercial buildings. The board is comprised of a water-resistant core and water-repellent paper.

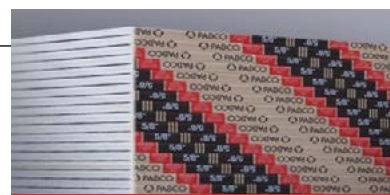
Thickness	Type	UL Core
5/8"	Type X	PG-5WS



### PABCO® EXTERIOR SOFFIT

PABCO Exterior Soffit is designed for application on the underside of exterior soffits, open porches, walkways, carport ceilings and similar installations that are completely protected from contact with water. The gypsum core contains additives that enhance its ability to resist sagging and is wrapped in a moisture resistant paper to increase its resistance to moisture.

Thickness	Type	UL Core
1/2"	Regular	N/A
1/2"	Super C	PG-C
5/8"	Type X	PG-11
5/8"	Type C	Type C



## SHAFTLINERS

### PABCO GLASS® SHAFTLINER

PABCO GLASS Shaftliner panels protect your buildings from fire, mold and water. They are ideal for lining elevator shafts, stairwells and constructing light weight fire barriers for cavity shaft walls and area separation walls in commercial and multi-family residential applications. The proprietary gypsum core is reinforced with glass fibers to increase stability. The product is encased in our distinctive orange, mold resistant coated fiberglass mat facing that resists warping, rippling, buckling and sagging.

Thickness	Type	UL Core
1"	Type X	PG-10



### PABCORE® SHAFTLINER

PABCORE Shaftliner Type X panels are manufactured with a proprietary fire-resistant Type X core which has been reinforced with glass fibers and other additives to increase its fire resistance. The core is encased in 100% recycled paper that is treated with mold and water-resistant agents to inhibit the growth of mold and mildew.

Thickness	Type	UL Core
1"	Type X	PG-10



## GLASS MAT

### PABCO GLASS® SHEATHING

Easily identified by its orange colored mat face, PABCO GLASS Sheathing is ideal for exterior commercial and residential applications subject to extended exposure during construction. The product can withstand extended exposure to normal weather conditions up to 1 year. It is comprised of a proprietary formula that provides a fire-resistant, mold- and water-resistant gypsum core that has been reinforced with glass fibers to increase stability.

Thickness	Type	UL Core
1/2"	Regular	N/A
5/8"	Type X	PGS-WRS



### PABCO GLASS® INTERIOR

PABCO GLASS Interior, with its mold and water-resistant gypsum core encased in a glass fiber mat, offers greater moisture resistance and improved dimensional stability compared to standard gypsum board. The product scores 10 for mold resistance, the highest rating when tested in accordance to ASTM D3273 \*Standard Test Method for Resistance to Growth of Mold on the Surface of Interior Coatings in an Environmental Chamber. The product is specially formulated to withstand extended exposure under normal weather conditions up to one year, making it ideal for pre-rock construction. The interior glass-faced panel is noncombustible, dimensionally stable and resists warping, sagging and buckling.

Thickness	Type	UL Core
1/2"	Regular	N/A
5/8"	Type X	PGI



## SOUND REDUCING DRYWALL

### QuietRock® ES

QuietRock ES is the first sound reducing drywall that easily scores and snaps using breakthrough EZ-SNAP™ technology. The patented QuietRock ES has no paper or metal on the inside of the panel making installation a snap. QuietRock ES cuts and installs like standard drywall while delivering acoustical ratings of up to STC 55 on single stud construction. It is ideal for residential and commercial construction with a lower total installed cost than other noise control methods, such as resilient channel and multi-layer drywall.

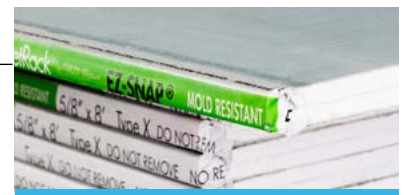
Thickness	Type	UL Core
5/8"	Type X	QRES



### QuietRock® ES MR

QuietRock ES Mold Resistant is the first and only easy score and snap, mold resistant sound damping drywall available. QuietRock ES Mold Resistant delivers reliable acoustic performance at a low installed cost - saving time, labor, materials, and valuable floor space. The mold resistant treatment to the paper and core can contribute to a healthier indoor environment. QuietRock ES Mold Resistant achieves the maximum score of 10 on the ASTM 3273 mold test, making it ideal for hospitals, schools, government projects and other mold sensitive applications.

Thickness	Type	UL Core
5/8"	Type X	QRES



### QuietRock® 510

QuietRock 510 is designed to improve Sound Transmission Class (STC) performance at an entry level price. QuietRock 510 is an excellent choice for boosting STC ratings for residential remodeling and new construction projects where a 1/2" panel thickness is desired. QuietRock 510 installs and finishes like standard drywall, requiring no special tools or training to use.

Thickness	Type	UL Core
1/2"	N/A	QR510



### QuietRock® 530

QuietRock 530 is a versatile, high performance gypsum panel that delivers superb noise reduction. This 'super panel' is UL fire-rated, STC-rated, shear-rated, and impact-resistant.

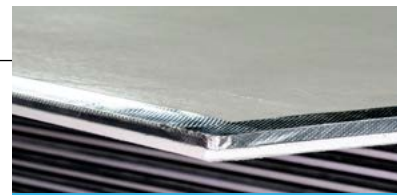
Thickness	Type	UL Core
5/8"	N/A	QR530



### QuietRock® 530 RF

QuietRock 530RF is a versatile, high performance sound damping gypsum panel that delivers superb noise reduction, radio frequency shielding along with fire and impact resistance. This specialty panel is typically used in the construction of high security environments such as SCIF rooms, government offices and data centers where radio frequency disturbances can affect sensitive data and equipment. Use of the complete QuietRF® System is required to achieve the RF shielding: QuietRock 530RF, QuietSeam® RF and RF Tape.

Thickness	Type	UL Core
5/8"	N/A	QR530



### QuietRock® 545

QuietRock 545 is the only sound damping panel that is designed for maximum sound isolation across a broad frequency range. QuietRock 545 is ideal for high-end home theaters, commercial theaters, professional studios, music rooms, and other projects where low-frequency mitigation is critical.

Thickness	Type	UL Core
1-3/8"	N/A	QR545



## QUIET® SYSTEM ACCESSORIES AND COATINGS

### QuietSeal® Pro

QuietSeal Pro is a high performing, non-hardening acoustical sealant used to maintain optimum acoustic performance of your wall assembly. Apply it around perimeters of the walls to prevent noise leaks. QuietSeal Pro stays soft over time to prevent cracking while continuing to reduce sound transmission. It is easy to use and offers a hassle free clean up – just use soap and water.

Applied Thickness	Coverage	VOC
Approx. 1/4" bead	88 Linear feet using a 1/4" bead	Low VOC <0.1 g/L



### QuietPutty®

QuietPutty is Class-A fire-resistant acoustical putty designed to preserve the performance of STC rated assemblies. Use QuietPutty on electrical outlet boxes, rocker switches, HVAC ducts, water hookups, cable systems or any other penetration that requires an acoustic seal. QuietPutty is clean, easy to use and requires no tools to apply. QuietPutty will not shrink and remains soft over time, ensuring a long-term seal that maximizes STC performance.

Size	Coverage
1/8" thick 7-1/4"x 7-1/4"	1 pad per 2"x4" junction box



### QuietGlue® Pro

QuietGlue Pro is a high performance, low cost acoustical compound designed to be cost effective for commercial projects and small do-it-yourself projects. QuietGlue Pro can be applied to drywall or wood (plywood, OBS, MDF) to create a constrained layer damped lamination in the field. Ideal applications include subfloor laminations, curved walls, coffered ceilings or in situations where sourcing QuietRock may not be practical. QuietGlue Pro is not a construction adhesive. Laminated layers must be mechanically attached in accordance with local building requirements.

Applied Thickness	Coverage	VOC
1/8" bead random pattern	One 28 oz Tube per 4x8 sheet (32 ft²)	Low VOC <0.1 g/L



### QuietSeam® RF

QuietSeam RF is a conductive sealing and bedding compound used to maintain metal to metal and grounded connectivity on field-modified QuietRock® 530RF panels. Available in 1 gallon pails.

Applied Thickness	Coverage
3/8" bead	500 linear feet per gallon



### QuietCoat®

QuietCoat is a sprayable, viscoelastic polymer coating that reduces noise and vibration with minimum weight, bulk and cost. QuietCoat® is engineered specifically for coating nonporous materials including stainless steel, galvanized iron, aluminum and composite (reinforced plastic) materials.

Applied Thickness	Coverage	VOC
1 to 3 mm total	40-80 ft² per gallon	Low VOC <0.1 g/L

Common uses include: plumbing and sewer pipes, consumer electronics, appliances, factory process and material handling equipment, HVAC, air handling units, ducts, elevators, escalators, vehicles, and rail cars.





**PABCO Gypsum**

what the job demands®

[PABCOgypsum.com](http://PABCOgypsum.com)

Sales

**877.449.7786**

Technical Services

**866.282.9298**

Legendary  
**QuietRock®**

Dual-Purpose  
**MOLD CURB®**

Trusted  
**FLAME CURB®**

Protective  
**PABCO GLASS®**

Versatile  
**ABUSE CURB®**