



Custom Infrared Sauna Solutions

Feel better. Do more. Live fully.



Scan for more
information.

Your partner for tailored, turnkey service with the world's leading maker of infrared saunas.

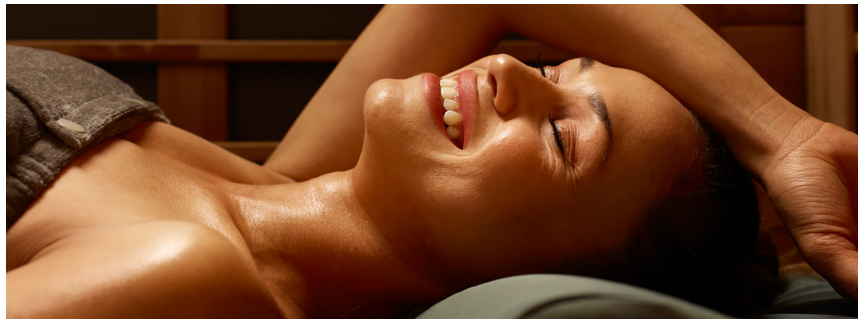


Elegant, Modern Custom Design

Your homeowners can have exactly what they want with a custom design that integrates their architecture.

Exceptional Materials, Superior Results

Our 3/4" wood provides a longer-term solution and warranty than a cabin. A better option for commercial or elevated residential space.

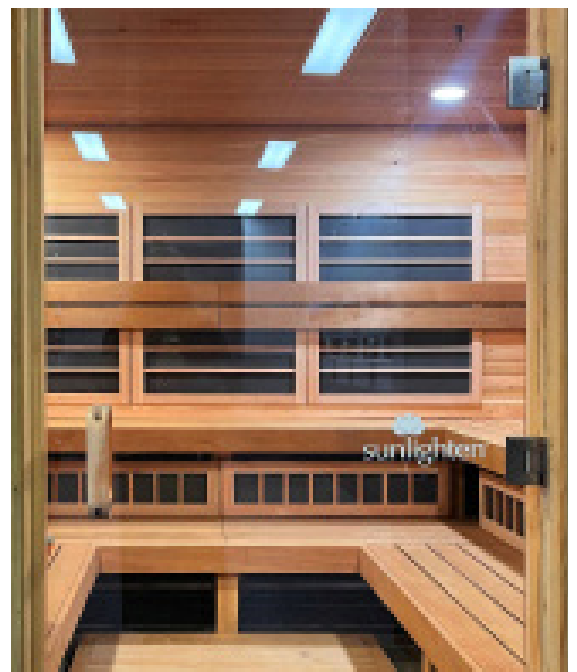
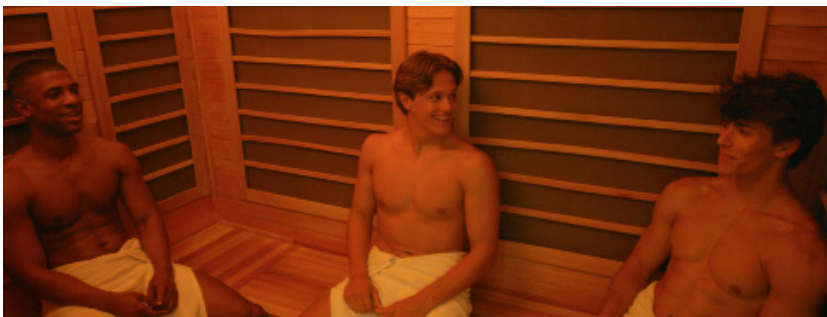


Full Support Team

Let us supplement your expertise with our infrared expertise. We make installing a custom sauna easy and eliminate the need for additional labor.

Patented Infrared

Sunlighten's heating technology provides clinically-proven health benefits with the most effective infrared available from the world's best brand.



What is a custom sauna?

A custom sauna elevates the experience beyond a traditional cabin sauna. It's the perfect solution for the discriminating homeowner who wants to create a beautiful wellness space that makes being healthy easy and pleasurable. The design matches their home's aesthetic making it flow with their environment and their lifestyle. They get exactly what they want and something no other home has.



Sunlighten makes it easy for builders.

You've got enough on your plate, adding an infrared sauna isn't another job for you. We give you everything you need to make putting an infrared sauna in your homeowner's home a pleasure for you, not a headache. Your Custom Consultant facilitates everything for you through the whole process.

- Design Services - CAD drawings with floorplan and space planning options; 3D line drawings showing interior and exterior
- Design Options - finish colors, unique door designs, creative wood patterns, bench design options
- Sunlighten provides all materials (wood for walls, ceiling, floors, benches, control panel, heater cabinets)
- Easy-to-install instructions and full installation support including communication and coordination with electrician